

# nEWs and viEWs

from the Churches in Ewhurst

Issue 46 Spring 2014



  
Cedar Court  
care home  
sharing minds and hearts

## *Luxury brand new suites now open*

The much-anticipated Alexandra Suites at Cedar Court Care Home, Cranleigh are now open. This collection of just 16 brand new luxury suites boast superb accommodation and combined with award winning care services offer elderly residents the perfect home from home environment.

Complementing the new suites is a brand new Bistro, The Keats Library, the Cedar Sanctuary and splendid gardens created by a Chelsea Flower Show Gold Medal Winner.



For more information pop in for a cup of tea and a chat.  
Let us show you we care.

**Tel. 01483 275 191**  
residential, nursing and dementia care

Cedar Court Care Home, Essex Drive off Elmbridge Road  
Cranleigh, Surrey GU6 8TX [www.cedarcourtcarehome.co.uk](http://www.cedarcourtcarehome.co.uk)

Printed by Andrew Lock of Top Print



**Highlights of Issue 46**

Churches Together in Ewhurst	page	5
News from St Peter & St Paul's	pages	7-23
News from the Baptist Church	pages	24-28
Ewhurst Stoolball Club	page	29
Ewhurst Parish Council	pages	32-35
Musical Events	pages	36-37
Rainbow's End Pre- School	pages	38-39
News from Ewhurst CE Infant School	page	41
In Our Midst	pages	43-45
Local History Corner	pages	46-47
Ewhurst Evening WI	page	49
The Ewhurst Players	page	52-53
Cover:	Crocus	Jan Jesson

**SPRING — Pam Childs**

Woods full of bluebells, green buds on trees,  
winter winds calming to a gentler breeze  
clocks going forward to make longer days  
the sun shining forth with more forceful rays  
still colder at night time with occasional showers  
more time to do things in the long day light  
hours.

Mowing the lawn and clearing the weeds  
off to the garden centre to buy compost and  
seeds  
hanging the washing out on the line  
sitting in the garden for the very first time  
hats gloves and scarves are all stored away—  
Winter has melted - Spring's here today!

<p><b>DAVID MANN &amp; SONS LTD</b></p> <p><b>CRANLEIGH 273777</b></p> <p><b>For HARDWARE FURNITURE and FURNISHINGS</b></p> <p><b>CARPETS &amp; CURTAINS</b></p> <p><b>Removals &amp; Warehousing</b></p> <p><b>OPEN SIX DAYS</b> 8.30-5.15 (Wed 9.15-5.15 )</p>	<p><b>Hunters Lodge</b> <b>Veterinary Practice</b></p> <p>Philip M Stimpson MA, VetMB, MRCVS</p> <p>1 Mapledrakes Road Ewhurst GU6 7RG</p> <p>41  01483 276464 Wood- bridge Hill, Guildford GU2 9AD</p> <p>01483 570782</p> <p></p>
<p><b>Rumbeams Cottage Products</b></p> <p><b>Quails Eggs</b></p> <p><i>£1.50 a doz.</i></p> <p><b>My eggs are produced by pampered quails.</b></p> <p>I raised the quails from eggs, they are as free-range as something that size can be, and they are fed extremely well!</p> <p>If you would like to place a regular order, please call me on 268627. Alternatively, just telephone when you would like some. All orders delivered to your door!</p> <p><i>Rumbeams Cottage, Ewhurst Green: 268627</i></p>	<p><b>Mrs R.A. Wimbleton</b></p> <p><b><u>State registered chiropodist</u></b></p> <p><b>Surgery (doorstep parking) &amp; visiting practice</b></p> <p><b>Established 30 years</b> <b>The Street, Ewhurst</b></p> <p><b>Tel: 01483 277505</b></p>

**GLEBE COFFEE MORNINGS**

*(arranged by the two Ewhurst churches)*

*Did you know that on every Wednesday morning  
throughout the year,  
tea, coffee and cakes are served at the Glebe Centre?  
So, if you are at home and don't feel like putting the  
kettle on,*

***Why not meander down to The Glebe and have a  
cuppa with us?!***

*We are sure you'll meet up with folk you know -  
and are bound to make lovely new friends living  
somewhere around the village.*

*Doors open at 10.30 am through to lunchtime  
(and the cost is a small donation towards more coffee!)*

***HOPE TO SEE YOU SOON!***

**Women World Day of Prayer**

*Ewhurst Churches Together*

**Friday 7<sup>th</sup> March, 2.00pm**

**Ewhurst Parish Church**

*The service this year* **PLEASE COME AND  
JOIN US**

*Refreshments available afterwards  
is compiled by the women of Egypt*

*The theme is*

***“STREAMS IN THE DESERT”***

*Speaker: Anne Payne, St Saviours, Guildford .  
Anne is the Pastoral Care Director and has recently  
visited Egypt.*

*Refreshments available afterwards*

## nEWs and viEWs from the churches in Ewhurst



**Rainbow's End**  
PRE-SCHOOL EWHURST

We are a non-profit making community pre-school in the heart of Ewhurst Village providing early years education for 2 to 4 year olds.

We're open 9:15 till 12:15 term time. We also offer extended sessions till 14:45 on Mondays, Tuesdays and Thursdays

Feel free to drop in or contact us to come and meet the staff and children.



Tel: 01483 808488

Tel: 01483 278378

Email: [rainbowsendpreschool@gmail.com](mailto:rainbowsendpreschool@gmail.com)

Website: [www.rainbowsendpre-school.org.uk](http://www.rainbowsendpre-school.org.uk)

### **EwCare**

Ewcare is a good neighbour scheme which provides support to people in the Ewhurst and Ellens Green community.

So don't forget! You can contact EwCare on 01483 277606 between 10.00 am and noon Mondays to Fridays. Please give us as much notice as possible of your request so that we can find a volunteer to help you.

We are always looking to increase the number of Duty Officers — can you spare just 2 hours a month to man the EwCare phone? We also need car drivers, for both short journeys and trips to RSCH, please get in touch with Angie on 01483 277505 or Di on 01483 277679.

**DON'T FORGET US**



**After our wet winter, have some springtime TLC for the garden!**

- Complete garden design
- New beds and borders
- Planting plans
- Rejuvenating existing beds

**LESLEY WOOD GARDEN DESIGN**  
01483 272488 - 0771 228 9777

[www.lesleywoodgardendesign.co.uk](http://www.lesleywoodgardendesign.co.uk)  
[lesleymwood@btinternet.com](mailto:lesleymwood@btinternet.com)

## ST PETER AND ST PAUL'S CHURCH



We are approaching the time of Lent in the church year, recognised as a time of reflection; especially good for assessing where we are in life and in our walk with God.

Looking back at old diaries, Laura and I realised that we have reached the milestone of ten years since we became part of Ewhurst life. We did our last 20/20 service at our previous Parish on the first Sunday in February 2004, moved house the following Wednesday, I was installed in Church on the evening of Shrove Tuesday 24<sup>th</sup> Feb and took my first service on Ash Wednesday.

Needless to say, a lot has changed in the last 10 years. I had been interviewed a few months earlier by Church Wardens Anne Barrett-Lennard and Colin Stewart in the South Transept of the church (no Wilson Room for meetings then). We went for lunch at the Wheatsheaf in Ellens Green, part of the Parish but now sadly closed. And later met parishioners at a social evening in the Old Rectory Nursing home and later again at the Glebe. We met Mabel Edwards and George Nicholson, both important characters in church and village life and both sadly passed away, along with many others who have become friends over the years.

Many events have overtaken us, sometimes good and occasionally bad, and much has changed over the past ten years but then we all know that life is a journey and things move on. Psalm 23 speaks of the Lord leading us as we travel through 'green pastures and quiet waters' but also 'through death's dark vale'; acknowledging that both situations are part of life but affirming that God will never desert us no matter what we go through.

John Lennon (not always my favourite songwriter) sang the phrase 'life is what happens to you while you are busy making other plans' ('Beautiful Boy' was the song I think, but the quote is much older). On this occasion I think his reflection is an accurate picture of how things so often are – but not of how they should be. Life is not for rushing though at the fastest pace – it is not something to be 'got over with'! It is a special gift and we should not allow ourselves to be pressured into squandering it nor spend it dreaming of better ways things might have turned out.

## EASTER SERVICES AT ST PETER AND ST PAUL'S



Sunday April 13th	Palm Sunday Walk with Donkey All Age Service	10.30am 11.00am
Monday April 14th	Compline	7.30pm
Tuesday April 15th	Compline	7.30pm
Wednesday April 16th	Compline	7.30pm
Thursday April 17th	Maundy Thursday Holy Communion All Night Vigil	7.30pm 8.30pm
Friday April 18th	Good Friday Walk of Witness Joint Service at Parish Church Vigil at the Cross	10.00am 11.00am 2.00pm
Sunday April 20th	Sunrise Service on Pitch Hill Holy Communion Easter Family Communion	5.50am 8.00am 10.30am

### HELP TO RAISE FUNDS FOR THE CHURCH WHILE DOING YOUR SHOPPING.

We have registered Ewhurst Church on the  
[easyfundraising.org.uk](http://easyfundraising.org.uk) website.

You can shop with 2000+ Brand Name retailers and to raise  
funds you just register and use the links from the site- it's that  
simple! Up to **15%** of every purchase is donated, depending on  
which retailer you select and what you buy.

**PLEASE REGISTER TODAY FOR EASY FUNDRAISING!**

**[www.easyfundraising.org.uk/causes/ewhurstpc](http://www.easyfundraising.org.uk/causes/ewhurstpc)**



## **ST PETER AND ST PAUL'S CHURCH**



Lent is a period set aside by the church with a specific focus on taking time to examine our lives. How are we using this precious gift of God? How do others see us? How does God see us? Might we choose a closer walk with Jesus in order to more fully live? Jesus said 'I have come that they may have life, and have it to the full'. Can we put more into our relationship with him and, in doing so, get more out of the life he has given us?

Looking back on life is bound to bring back painful memories and fond ones too, you will see how you have grown in the years, and be able to trace the journey. You may see signs of Jesus who has walked those steps with you.

Looking back on our time here Laura and I can see our own personal journey, which has had both joy and pain, but we can also see how the church we love has evolved gradually, reflecting changes in the local as well as broader community.

We see many more younger families at our 20/20 and Breakfast services, people who want to bring their children up within the community of faith and knowing the love of God in their lives. There are also many people who love church in its traditional sense, the organ and bells and choir and liturgy all combine to lift their hearts in worship. This Lent, as we reflect on our walk with God, I hope that all people will find that there is a place here for them to express their faith, and worship God, and be part of a living Christian community.

Rev'd David Minns

**MOTHERING SUNDAY**  
**Join us for our family service**  
**on Sunday March 30th**  
**at 9.15am**  
**followed by**  
**Bacon Butties in the Wilson Room**

## SONNY'S CAFE

is open in the Wilson Room at St Peter & St Paul's church on school term mornings.

Just drop in on Monday, Tuesday, Thursday or Friday from 8.45am until mid-morning. We serve Fair Trade tea and coffee, soft drinks and biscuits in the wonderful surroundings of our new room, in the heart of the churchyard.

There are toys for the children and a warm welcome for everyone—stay as long as you like and make new friends!

## St Peter & St Paul, Ewhurst Toddler Group



### Toddler Group

The Toddler Group continues to flourish

We will break for Toddlers from 28th March, our last meeting, and return on 25th April.  
We meet from 10.00 - 11.30 am.

New members are always very welcome provided they bring a responsible adult with them.

**Pam Childs(01483 277511)Tricia Hislop(01483 274359)**

**nEWs and viEWs from the churches in Ewhurst**

---

**DIARY OF EVENTS  
AT ST PETER AND ST PAUL'S CHURCH**

Sunday March 2nd	BCP Holy Communion 20/20 Service Choral Evensong	9.00am 10.30am 6.30pm
Sunday March 9th	BCP Holy Communion Holy Communion with Treasure Seekers	8.00am 10.30am
Sunday March 30th	BCP Holy Communion Mothering Sunday Service	8.00am 9.15am
Sunday April 6th	BCP Holy Communion 20/20 Service	9.00am 10.30am
Sunday April 13th	Palm Sunday Walk with Donkey Palm Sunday Service Steiner's Crucifixion	10.00am 11.00am 6.30pm
Monday 14th, Tuesday 15th, Wednesday 16th April	Compline	7.30pm
Thursday April 17th	Maundy Thursday Communion All Night Vigil	7.30pm 8.30pm
Friday April 18th	Good Friday Walk of Witness Good Friday Service Vigil at the Cross	10.00am 11.00am 2.00pm
Sunday April 20th	Sunrise Service BCP Holy Communion Easter Family Communion	5.50am 8.00am 10.30am
Sunday May 4th	BCP Holy Communion 20/20 Service Choral Evensong	9.00am 10.30am 6.30pm
Thursday May 29th	Ascension Day Communion	7.30pm

***EASTER CARDS FOR SALE  
from Mid March***

Sold in aid of the Parish Church  
***Two designs available in packs of 5  
£2 per pack***

*Send Easter Greetings  
and  
Support the Church*

~~~~~

CARDS AVAILBLE FROM THE WILSON ROOM  
NEXT TO THE CHURCH ON

Monday~ Tuesday ~Thursday~ Friday  
**8.45 – 10.30 am**  
and Sunday after the **10.30 am** Service

***GOING FOR A SONG!***

***We are looking for donations for the stall at this  
year's EASTER MARKET.***

***Good as new items but not clothes.***

***We will also be grateful for raffle prizes .***

***Please contact Jane if you have any items for  
the Easter Market, by the end of March***

***geoff@ewhurstgreen.fsnet.co.uk***

***MANY THANKS***

# **EASTER MARKET**

**Ewhurst Parish Church Charity Event**

**Tuesday 8 April**  
**10am to 2pm**

**Chase away the winter chill!**  
**Step into SPRING**

at

**The Parrot Inn**  
**Forest Green RH5 5RZ**

**Vintage bus from Ewhurst to Parrot Inn  
and back**

Connects with route 53 to/from Guildford and Cranleigh

**BE INSPIRED by our stalls with a difference**

Easter gifts, chocolate, plants, jewellery, crafts, cards,  
ladies fashions & accessories, books, glassware,  
ceramics, preserves, honey products and more...

**Meet EWBank'S china & glass expert**

Discover what makes a piece special and valuable.

Bring along your favourite items for appraisal.

Talk and Q&A at 11am. Appraisals until 1pm.

**RELAX over a chat with friends**

Parrot Inn refreshments available – tea, coffee,  
lunch etc.

[saintpeterandsaintpaulewhurst.org.uk](http://saintpeterandsaintpaulewhurst.org.uk)

**Entrance: £2**

## LENT LUNCHES

This year's Lent Lunches will be held on Thursdays March 20th and 27th, and April 3rd and 10th. Everyone is welcome at the Wilson Room between 12.15pm and 2.00pm for delicious home made soup, rolls, cheese and fruit.



The cost is £5 and proceeds will be split between Shooting Star CHASE hospice care for children, and the Bishop's Lent Appeal this year for Christian Aid.



## **M.E.S** Mechanical Engineering Services

**Bookings 01483 351964**

**Servicing,  
Repairs & MOT  
for all makes  
of vehicle**

**Full Engine  
Diagnostics**

**Maintain your  
Vehicle Warranty  
when you use us  
for all your  
Automotive  
Needs**



**Free  
Collection  
and Delivery**

**Courtesy Cars  
Available**

Visit our website

**[www.carscranleigh.co.uk](http://www.carscranleigh.co.uk)**

**FROM THE PARISH CHURCH REGISTERS**

**Baptism:**

January 19th                      Grace Tosh

**Funeral:**

February 14th                      Jill Burt

**2014 ANNUAL CHURCH PARISH MEETING**  
will be held on  
**Tuesday 29th April**  
at 7.30pm  
in The Wilson Room

**PATTERN OF SERVICES**

| WEEK | 8.00 A.M.     | DAYTIME                                                           | 6.30 P.M.       |
|------|---------------|-------------------------------------------------------------------|-----------------|
| 1    |               | 9.00 am BCP Communion<br>10.30 am 20:20                           | Choral Evensong |
| 2    | BCP Communion | 10.30 am Holy Communion -<br>Common Worship<br>(Treasure Seekers) |                 |
| 3    | BCP Communion | 9.15 am Breakfast Service<br>10.30 am Morning Prayer              | Evening Worship |
| 4    | BCP Communion | 10.30 am Holy Communion -<br>Common Worship<br>(Treasure Seekers) |                 |
| 5    | BCP Communion | 10.30 am Morning Prayer<br>(Treasure Seekers)                     |                 |

*N.B. Check service details by looking in the weekly church news sheet or in the church porch*

### The Flood

I am writing this article in the middle of February and it is difficult to think of anything but the floods that are causing such damage and misery. The wettest January for 250 years has been followed by a wet and stormy February that has seemed even worse, if that were possible. The Meteorological Office has told us that, with the global increase in temperature, more extreme weather is to be expected, meaning the flooding we endured at the beginning of this year and heat waves. Given all the destruction and disruption the incessant rain has caused, it seems close to impossible to believe that only two years ago we were worrying about a long-term drought.

Watching the daily down pour reminded me of Noah and his Ark. He had to endure 40 days and 40 nights of continuous rain and that is even more than we have seen over the last 40 days. The account of Noah's adventures is to be found in chapters 6 – 9 of Genesis and it is well worth another look. He lived at a time not all that long after God created the world; humans might have existed only for about 1,600 years. God was extremely unhappy with the way humans were behaving, indeed he grieved that he had made man on the earth. The reason was that all he saw was great wickedness and evil thoughts. God's solution was to wipe mankind from the face of the earth. It is fortunate for us all that Noah had found favour with the Lord. Noah was a righteous and blameless man so God revealed to him his plan to put an end to all people. But not quite, God gave instructions to Noah to build a large boat to house himself, his wife, his sons and their wives, plus two of all living creatures. When the Ark was complete and everyone (including the animals) was aboard, it was the Lord who shut the door. The vessel must have been a very crowded craft when it sailed, but perhaps speculation on the conditions between decks is better avoided. The voyage

lasted between two and three hundred days while the flood came and went. Noah sent out a raven, followed by doves to look for signs that the crisis had passed. Then God told Noah that he, and all his ship mates could disembark. At the end of it all, God promised he would never again send a flood to destroy the earth in spite of the all evil that humans might



do. "And God said: I have set my rainbow in the clouds, and it will be the sign of the covenant between me and the earth".

Most people agree that the story of Noah's Ark is just that, a story. Although, some have tried hard to find archaeological and other evidence



## **nEWs and viEWs *from the churches in Ewhurst***

---

Most people agree that the story of Noah's Ark is just that, a story. Although, some have tried hard to find archaeological and other evidence for a major flood in ancient times, they have had no success. Certainly it is difficult to conceive of an event of the magnitude indicated in the story, even if it were confined to the Middle East. For us today, it is much more useful to look for the messages to be found in the story. The reason God was so upset with his creation was not humans themselves, but the way they were living and we are told that wickedness and sin were widespread. However, in stark contrast to all his contemporaries, Noah was seen by God as faithful and obedient, so he was given the chance of survival. However it came at a price because Noah had to undertake an enormous construction project that must have seemed a total waste of time to his friends. Noah showed faith and trust in God, he was dedicated and persevered. As a result, the Ark provided a refuge for those chosen by God.

You might be asking what this ancient tale has to do with now during the Spring of 2014. Lent begins on the first Wednesday in March and it seems to me that Noah has a lot to teach us about our attitude to the 40 days Jesus spent in the desert. Noah was a very human character. He is described as righteous and blameless and that he walked with God. These are terms used by the author of the story for those who honour God and do his will. Also they emphasise that there is a difference between people like Noah and those who just live. Lent is a time when we all should try to be more righteous and walk with God by setting aside more time for him. The description of Noah does not imply he was sinless, which is an encouragement because it shows that God accepts us as we are. God loved Noah and his family enough to save them from the flood, but to achieve this Noah had to show obedience to God's command: he had to construct the Ark and show a great deal of perseverance to complete the project. These are exactly the qualities we need during Lent: dedication to the season and persistence to see it through to the end. If we persevere, we will find God and that he cares for us, just as he cared for Noah when he shut the door of the Ark. The Ark was much more than just a boat, it was a refuge against the flood and in a sense Lent can be our refuge against cares and problems. It is a time when we can find peace and quiet in the busiest of lives. More than that, the Ark was the means of salvation for Noah, his family and all the animals of the earth. In the time of Lent we also look forward to the end of Lent, when our salvation comes bought by Jesus through his sacrifice on the cross, once and for all.

Tim Seller

**Pilgrimage to the Holy Land**

27th May - 4th June 2014

Led by Revd Vicki Burrows  
and Canon Chris Vallins.

Staying in 4\* hotels in Galilee  
and Jerusalem £1550 fully inclusive of scheduled  
BA flights, half board, plus all lunches, tips,  
transport and entrance costs included.

For more details:

email Revd Vicki Burrows:

[rector@stmaryslongditton.org.uk](mailto:rector@stmaryslongditton.org.uk)

or contact Val Henry who went on a previous vis-  
it - Tel: 275380



**BEN NICHOLSON**

**TREE SURGERY  
FELLING & FENCING**

**SAWN TIMBER**

**eg fencing, logs, oak beams,  
weather boarding etc**

**Tel: (01483) 548754**

**Mob: 0771 9026998**

**Fully Insured**



## Are you brave enough?

To climb to the top of Guildford Cathedral and then take the zip-wire to abseil down?

**Save the date now — Saturday 14th June**



- Support the Church, the School or both
- Limited places—when they've gone, they've gone
- Any age between 8 and 80
- £50 deposit then additional £150 sponsorship required
- Fully insured and led by professional climbers
- All equipment provided—bring your own courage

There'll be more information on our websites soon.

Or, call Tricia Hislop on 274359 to book your place now or be prepared to be disappointed!

## TEDDIES WANTED!

**The Rectory Fete 2014 will need Teddies  
of ALL sizes for the Teddy Bear Trail.**



If you have unwanted Bears at home or can get some from a Charity shop etc, we would love to have them.

Put them in a bag marked "Teddies for Fete" then take them to the Wilson Room at these times:-

Mon, Tues, Thurs, Fri - 8.45 - 10.00 in term time

Sundays after the 10.30 service

If you buy them, please contact Michelle Matthews  
01483 267790 for a refund.

## Bereavement Group Coffee Mornings

.Our Bereavement Group is planning a luncheon visit to ASK. We are hoping past members will join us and anyone who has been bereaved by death and would like to meet us is most welcome .



## DID YOU KNOW?

Our church now has its own website with information about services, other events and items available through the church.

Go to [saintpeterandsaintpaulwhurst.org.uk](http://saintpeterandsaintpaulwhurst.org.uk) and see for yourself.

We are also on Facebook : Saint Pater and Saint Paul, Ewhurst.

You can e-mail us on [ewhurstchurch@yahoo.co.uk](mailto:ewhurstchurch@yahoo.co.uk)

**EWHURST  
PARISH CHURCH**

**Stainer's**

**CRUCIFIXION**

**Sunday 13<sup>th</sup> April  
(*Palm Sunday*)  
at 6.30 pm**

***soloists***

**Graham Neal ~ Tenor  
Jamie MacLean ~ Baritone**

**The extended choir of Ewhurst  
Parish Church  
Directed by Val Henry**

**Free Admission - Retiring Collection**

**nEWs and viEWs from the churches in Ewhurst**

**Planned Giving and Ewhurst Parish Church**

To help safeguard the church's future, we need to plan ahead. This is much easier if we know, in advance, how much money we have coming in. Regular giving, known as Planned Giving, helps us achieve this. Planned Giving means agreeing to give the church a set amount of money (decided by you) each month/quarter/year. This makes managing the church's future less precarious.

If you could be part of the Planned Giving scheme, it would make a real difference to how the church continues and develops. The scheme is completely confidential and under your control.

*To find out more about the Planned Giving scheme, please contact the Stewardship Officer:*

*Mr P Henry  
Broadstone Cottage  
Gadbridge Lane  
Ewhurst  
GU6 7RW  
Tel: 01483 275380*

**WOMEN'S FELLOWSHIP—All Ladies Welcome**

Women's Fellowship:- this is a very friendly group. We meet once a month and our programme covers a variety of subjects.

Meetings are at 2.30pm unless otherwise stated **on the second TUESDAY in the month.**

Tuesday March 11th

"Is Question Time all it Seems?" a talk by  
Clr. Diane James

Tuesday April 8th

A talk by Rob Bookham on cheese making at  
Charmer Cheese in Rudgwick

Tuesday May 13th

Members Lunch - meet at 12.30pm



**JUST A NOTE ...  
Stainer's Crucifixion 2014**

At the start of Holy Week, Sunday 13<sup>th</sup> April, PALM SUNDAY/PASSIONTIDE, Ewhurst Parish Church will be performing John Stainer's New Testament musical miniature, THE CRUCIFIXION, which most movingly portrays the last days of Jesus Christ's life on earth - the encounter in the Garden of Gethsemane, His betrayal, The Procession to Calvary, the humiliation, The Crucifixion and the three last words. With dramatic choruses, and the opportunity for congregational participation, this is a masterful work. First performed in Marylebone Church, London in 1887, it is still performed there on an annual basis each Good Friday; words selected and written by J. Sparrow-Simpson. With professional soloists, Graham Neal, Tenor and Jamie Maclean, Baritone, guest organist and an extended choir, it promises to be a memorable occasion!

Stainer's Crucifixion will be the liturgy for the evening service at 6.30 pm. Running time, 1 hour. Entrance free - Retiring Collection to defray expenses.

You will be most welcome.

Rehearsals commence Friday 21<sup>st</sup> March at 7.30 pm in Ewhurst Parish Church and all singers are warmly invited. If you are unfamiliar with the work or are in need of a refresher, the rehearsal period will enable you to get a firm grip on the piece. Music provided. For more information tel Val Henry on 01483 275380 or email [val.henry@mgownersclub.net](mailto:val.henry@mgownersclub.net).

A recording of the 2011 performance at Ewhurst Parish Church is available from The Wilson Room.

**PLAY THE ORGAN!**

To mark the 150<sup>th</sup> Anniversary of The Royal College of Organists, Surrey Organ Association has launched an organ student scheme - encouraging pianists to play the organ. The following poster gives details but if you would like to chat informally about this unique opportunity, do please get in touch.

(see page 37)

Val. Henry

I wonder if you like a good story? Stories come in all shapes and sizes, long and short, happy and sad, fictional or real life testimony. We all tend to like stories, whether we read them in books, watch them on the TV or hear them from family and friends. Young children love to hear stories don't they, normally the same one again and again. And although we might not realize it this doesn't change much as the years slip by – we still enjoy a good story, stories that shape our lives, our values, our hopes and dreams.

The bible is full of stories. Some of these stories are historical, telling us about things that have happened sometimes thousands of years ago. Some of these stories are what are called prophecy, telling us about things that have yet to come to pass, and may not in our lifetime. Some use poetry and some song to tell their tale. Jesus followed in that tradition he used stories extensively in his teaching, stories we refer to as parables.

Parables use images, word pictures to help us understand their greater truths. We don't read parables literally like history but they are designed to stir our imaginations, our hearts, as we engage in understanding. One such parable is called the "Parable of the Tenants". I imagine quite a few of us can relate to being tenants. But in this story that Jesus tells, the tenants are caretakers of a vineyard which symbolizes the world, so in that sense we are all tenants in this life.

To follow this you might want to read the parable which you will find in Mark's gospel, chapter twelve and verses one to nine.

On the face of it a simple story, Jesus describing God as "the man who plants the vineyard" and the vineyard itself as the world and humanity as the tenants. The servants who come to the vineyard at harvest time are the prophets sent by God, men and women whose role it is to call the tenants' attention to the real owner of the vineyard to whom they are therefore ultimately accountable.

It was and is still today sadly the fate of many of the prophets that they are often beaten up and ridiculed for their views, or worst - imprisoned and left to rot. As tenants on God's earth, we too seem to have something innately in us that wishes to reject God – maybe you have noticed that in yourself? Even the Son, the one who would inherit the vineyard and who is loved by his father when he comes, is taken and killed.

So through the parable Jesus asks "What would you do with such



## nEWs and viEWs from the churches in Ewhurst

---

when he comes, is taken and killed.

So through the parable Jesus asks "What would you do with such tenants"? People who fail to recognize God as their creator, who fail to respond to all his attempts to reach them through his servants the prophets. People who are so confident that their own authority is the highest authority.

It is a sobering thought isn't it. A thought that Jesus presents to us through this parable that we can live our lives in active, or passive rejection of the creator and sustainer of life. What would you do with such tenants he asks?

But although the parable ends with that question thankfully the story does not end there. As we read more we learn that despite the death of His Son, in fact through the death of His Son Jesus who willingly died for us, God continues to reach out to all with the ever present offer of forgiveness, if we will only recognize our error, turn from it and look to God who holds the past, the present and our future.

The parable of the tenants is a story that has been told down through the ages and continues to this day to bring us this truth and this challenge, if only we are willing to hear. Any good Christian friend or minister can tell you how you can make your own story part of God's good story.

It really is so much more than just a good story ...

God Bless

Rev. Simon Bodington  
(Minister)



### **Ewhurst Baptist Church**

Church: +44 (0) 1483 267878

Home: +44 (0) 1483 495426

Mobile: +44 (0) 7930 180365

Email: [minister@ewhurstbaptistchurch.org.uk](mailto:minister@ewhurstbaptistchurch.org.uk)

Web: [www.ewhurstbaptistchurch.org.uk](http://www.ewhurstbaptistchurch.org.uk)

**nEWs and viEWs from the churches in Ewhurst**

---



**Prayer for the Village of Ewhurst**

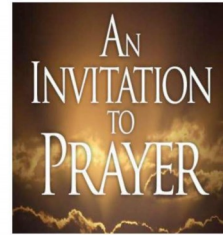
Knowing that prayer changes things, we meet on the fourth Thursday evening of every month at the Baptist Church in order to pray for the village of Ewhurst.

We start at 8.00pm but tend to gather about 7.45pm for tea and coffee. We normally wrap up by 9.00pm

If you are someone who cares for the spiritual well being of the village you are welcome to join us.

(Please call or check our website for any date changes).

Simon Bodington 01483 495426  
or email: [minister@ewhurstbaptistchurch.org.uk](mailto:minister@ewhurstbaptistchurch.org.uk)  
or [www.ewhurstbaptistchurch.org.uk](http://www.ewhurstbaptistchurch.org.uk)



**Keep Interested – Keep Socialising  
(KIKS club)**

at Ewhurst Baptist Church

Our Monday afternoon social club, that meets in our church hall, on the 1<sup>st</sup> and 3<sup>rd</sup> Mondays of every month, between 2 and 4pm.

KIKS has been running for a couple of years now and offers an opportunity of friendship, chat, crafts and various board games alongside tea and cake.

**WE WOULD LOVE TO SEE YOU!**

Don't stay home wishing you had a bit of company,  
put your coat on, come and join us.

Lifts can be arranged, just telephone the church office  
on 01483 267878

## **SEASONS – Spring**

Thoughts from a SAD sufferer (Seasonal Affective Disorder)

The winter can be long and dark – and seems especially so in January and February. This winter has brought few bright frosty days, making it seem darker and longer than ever. It has been particularly difficult for people who suffer with Seasonal Affective Disorder. The 'low' feeling that the average person experiences in the winter months will often relate to a real depression for the SAD sufferer – with all the difficult symptoms of depression. Symptoms can be – confusion, lack of co-ordination, poor memory, anxiousness, panic attacks, loss of confidence, eating abnormalities, sleepiness, lethargy, poor decision making abilities, sadness and sleep problems including vivid dreaming, teeth gnashing and night panics. Our hair can fall out and look dank and lifeless and I certainly resort to bad personal habits that I would never do in the summer – such as biting my finger nails!

Fortunately winter is just a season; it is not here for the long term. I look at it as a time of deadness in my life – a time of waiting - 'hibernating' if you like. I put off making important decisions if I can, until the sun is higher in the sky again. This is usually around Easter time and then I feel my energy being restored and experience feelings of renewed life and vigour. My mind –having been fairly dormant during the winter months, suddenly comes alive with creativity and seems to run wild with thoughts and ideas. Enthusiasm and confidence bursts forth at last.

As I look around at nature I ponder that this experience is similar to the cycle of some plants and animals. There are plants that still look wonderful throughout the winter, keeping their green leaves and perhaps even flowering and animals that remain active despite the change in their environment. But many plants and animals turn to hibernation – a time to rest and wait.

As the green sprouts of the spring bulbs start to burst through the bare ground we are filled with the hope of spring and brighter days – of new life, bursting forth. Then on a warm sunny day the ultimate will happen - the flowers will open and declare their beauty and life to the world.

“The desert and the parched land will be glad; the wilderness will rejoice and blossom. Like the crocus, it will burst into bloom; it will rejoice greatly and shout for joy.” Isaiah 35 v1

If you wish to discuss this article you can contact Carol who is a member of Ewhurst Baptist Church at [carolanne444@outlook.com](mailto:carolanne444@outlook.com)



## **BABY AND TODDLER GROUP at Ewhurst Baptist Church Wednesdays from 10:15 to 11:45**

Our aim is to provide an environment in which you and your children can make friends, chat, play and have a good morning out!

Everyone is welcome - mums, dads, grandparents and carers.

Refreshments are available for adults.

A fruit snack is provided mid morning for the children.

A variety of activities are available at each session.

For more information please contact:  
Jackie Bodington on 01483 495426  
or [Jackie\\_bodington@lineone.net](mailto:Jackie_bodington@lineone.net)



## **Room Hire in Ewhurst**

***Need somewhere to hold a meeting or function?***

**Have you considered the Baptist Church Centre?**

Facilities include:

- A large well equipped kitchen.
- A Church Hall that can seat up to 40 people at tables.
- Seating for up to 110 people (lecture style) in the Church.
- Several small meeting rooms.
- Our own car park.

**For Further Information, viewing & booking**

**Call Colin Crick on 01483 267878**

**or for more details / pictures:- [www.ewhurstbaptistchurch.org.uk](http://www.ewhurstbaptistchurch.org.uk)**

## The friendly Ewhurst Stoolball Club invites new players this season



Frequently asked question:  
What is stoolball?

A forerunner of cricket, stoolball is played with similar equipment. Wickets are wooden boards on stakes and the ball, bowled underarm, does not hit the ground before reaching the batter. The bat is the shape of a table tennis bat, made of willow with a long, sprung and spliced handle.

We are a very friendly village team with members aged from 12-65 years. We meet twice a week from April to July each year, and play home matches on the Ewhurst Green.

If you fancy some fun, light exercise then please come and meet us and learn the game.



All are welcome to our pre-season indoor training sessions

**(Wednesday evenings starting 26<sup>th</sup> Feb 2014)**

before opening night at the

cricket green on

**Wednesday 2<sup>nd</sup> April at 6.30pm.**

Please email [ewhurststoolball@gmail.com](mailto:ewhurststoolball@gmail.com) for more information.

[www.ewhurststoolball.co.uk](http://www.ewhurststoolball.co.uk)

nEWs and viEWs from the churches in Ewhurst

|                                                                                                                                                                                                                                                                                                                              |                                                                                                                                                                                                                                                                                                                                                                                                                                                                                                                                                                      |
|------------------------------------------------------------------------------------------------------------------------------------------------------------------------------------------------------------------------------------------------------------------------------------------------------------------------------|----------------------------------------------------------------------------------------------------------------------------------------------------------------------------------------------------------------------------------------------------------------------------------------------------------------------------------------------------------------------------------------------------------------------------------------------------------------------------------------------------------------------------------------------------------------------|
| <p><b>LOXWOOD<br/>LANDSCAPES</b></p> <p>Paul Gregson BSc Hons</p> <p>Hard and soft<br/>landscaping<br/>Garden design<br/>Any project considered</p> <p>For friendly advice and a free<br/>and prompt quotation<br/>contact Paul on</p> <p><b>01403 753 204</b><br/><b>07949 312 402</b><br/>paul@loxwoodlandscapes.co.uk</p> | <p><b>Robert Hay</b> FRICS<br/><b>Planning &amp; Design</b><br/><a href="http://www.roberthayplanning.com">www.roberthayplanning.com</a></p> <p>Chartered Surveyor offering wide experience in<br/>all aspects of Planning, Design &amp; Construction</p> <ul style="list-style-type: none"><li>• Extensions &amp; Conversions</li><li>• New House Designs</li><li>• Planning Applications</li><li>• Building Regulations</li><li>• Planning Appeals</li><li>• Project Management</li></ul> <p>For a free initial consultation telephone<br/><b>01483-277707</b></p> |
| <p><b>HAZELBANK<br/>COUNTRY<br/>STORES</b></p> <p>The Street, EWHURST<br/>Tel 01483 277442</p> <p><i>Groceries - Greengrocery<br/>Beers, Wines &amp; Spirits<br/>Tobacco - Confectionery<br/>Newsagent</i></p> <p><b>LOCAL DELIVERIES</b></p>                                                                                | <p><b>COMPREHENSIVE<br/>FOOT CARE</b></p> <p>HEALTH PROFESSIONS<br/>COUNCIL REGISTERED</p> <p><b>CHIROPODIST/<br/>PODIATRIST</b></p> <p><b>SUE ELLIOTT</b> D.Pod.M.,<br/>M.Ch.S, HPC REGISTERED</p> <p><b>SURGERIES AT</b></p> <p><b>EWHURST</b><br/><b>01483 277257</b><br/>AND<br/><b>CRANLEIGH</b><br/><b>01483 276178</b></p> <p><b>PLEASE TELEPHONE FOR<br/>APPOINTMENT</b></p>                                                                                                                                                                                 |



#### **MUSIC FESTIVAL BLOOMS IN MAY**

The Surrey Hills International Music Festival continues its fifth celebration season 1-4 May 2014 with four consecutive classical music events of outstanding quality performed in beautiful settings in the Surrey Hills.

Flying in from Berlin is Grammy-nominated Avi Avital, one of the world's leading mandolin players who joins multi-award winning classical accordionist Ksenija Sidorova at Denbies Wine Estate on Thursday 1 May at 8pm with a thrilling mixed programme that ranges from Bach to the fiery tangos of Argentinian composer Piazzolla.

On Friday 2 May at 7.30 pm opera star Meeta Raval will be joined by pianist Tessa Marchington for an evening of song exploring the world of famed artist GF Watts and his Circle in the beautifully restored Watts Gallery, Compton. Concert goers will hear a thrilling recital, introduced by Ayla Lepine, art historian who is a specialist on the artist and his period. As an additional treat, audience members will be invited to visit the Special Exhibition space during the interval at no extra cost.

The Festival's musical climax is the Saturday night Gala Concert on 3 May 7.30 pm at St Teresa's Effingham when three more world-class soloists perform with the much-loved professional orchestra, the London Mozart Players, under the baton of guest conductor Daniel Cohen.

Last but not least the Festival is holding its first "Cushion Concert" for a younger audience, aged 5-11 years, accompanied by their favourite toy animal and a parent, on Sunday afternoon 4 May at 4pm at Shere Village Hall. Wu Qian and co-Festival Founder Tessa Marchington perform excerpts from the Mother Goose Suite and Carnival of the Animals. Children will be invited to sit on cushions, many on the stage, to listen to the artists play. Peter Grobel is the narrator and concert sponsor Shere Delights will sell ice creams at the end.

The concerts are expected to be very popular so book early!

Tickets are available now from Guildford Tourist Information Centre, 155 High Street, Guildford, GU1 3AJ, 01483 444334 or book online at [www.surreyhillsinternationalmusicfestival.co.uk](http://www.surreyhillsinternationalmusicfestival.co.uk) and range in price from £25-£29. The Cushion Concert is free for adults and £5.00 for each child.

Julia Pearson, Chairman SHIMF Tel 01483 205369

## nEWs and viEWs from the churches in Ewhurst

# News from Ewhurst Parish Council



The Parish Council are delighted that Councillor Victoria Helstrip has been awarded the British Empire Medal in the Queen's New Year Honours List for services to the community of Ewhurst.

Victoria has been a Parish Councillor for 20 years, and the list of all she has done for Ewhurst would fill pages. In brief, she has been foremost in organising many successful celebrations and community events over the years: the VE Day celebrations in 1995, the winning entry for the Surrey Village of the Year in 2009, raising money and putting on events for the funding of the new EYSC building, the Millennium and Jubilee celebrations, and organising the Village Carnival for many years, to name just a few. Most recently Victoria has been to the forefront raising funds for the major project of renewing the Children's Playground on the Recreation Ground, and will be able to see all the hard work come to fruition this year when the second stage starts. Victoria's leadership in the community activities has generated an extraordinary number of interesting and fulfilling events where all members of the village can take part – from the very young to the elderly. Everyone benefits from her infectious enthusiasm! What the Awards Team recognised is that Victoria also quietly gives help and support within the community, most often without accolade or public/press recognition. We are so pleased that this recognition has now been given.

The Parish Council have set their budget for next year and we now await to hear from Waverley whether it has been accepted. The Chairman has been working in conjunction with the Clerk who is also the Responsible Financial Officer for the Council over many months to gather together details of expected costs next year for the Parish Council. Tenders had been received from contractors and estimates drawn up for utility bills and wages. Councillors had put forward suggestions where improvements were needed and funds therefore required. The Parish Council are receiving less government funding again this year and as a result of this, covering all necessary expenses for the facilities provided and to keep the village tidy at the same time as having to cope with increases in utility bills is becoming more difficult. The Parish Council had a difficult decision whether to cut expenditure or to increase the precept request from the parishioners. After much discussion the Chairman and Councillors proposed to keep the precept increase at 2% as previous years and therefore fall short on what it wanted to achieve in 2014-2015. The Band D cost to the Parishioner being £52.52 compared to £51.49 last year. Interestingly the proposed 8% increase which would have covered the extra expenditure the Council wanted to cover would only have increased the Band D charge to £55.60 but this was thought to be too large an increase for this year.

The Parish Council has been asked to explain the recent exhibition by Thakeham Homes Developers of their planned development along Cranleigh Road. Whilst there have been rumours in the village, the Parish Council is not privy to developers intentions or plans. The Council is certainly not able to comment on any rumour to individuals or to any developer, unless a planning application is brought to the planning committee. The Councillors on the committee then decide on a suitable response to the application which is sent to



## **nEWs and viEWs from the churches in Ewhurst**

---

privity to developers intentions or plans. The Council is certainly not able to comment on any rumour to individuals or to any developer, unless a planning application is brought to the planning committee. The Councillors on the committee then decide on a suitable response to the application which is sent to Waverley Planning Office to take into account when they decide on the application. This is the only time when Councillors may comment on planning to form one response from the Council.

Plans for the Phase Two of the Recreation Ground Playground renewal are being finalised and we hope that work will start by the beginning of May 2014. The recent very successful quiz evening has raised over £1000 towards the playground and thank you to all who attended as well as to the Playground Committee for organising. Funds in excess of £60,000 have now been raised and any shortfall of the final price will be made up by the Parish Council. The Playground will be opened for use during the forthcoming Village Carnival in July.

A recent emergency at the Village Hall when a gentleman watching a performance by the Ewhurst Players was suspected of suffering a heart attack, prompted a member of the public to ask whether we should have a notice in the village hall displaying telephone numbers of local defibrillator holders. It may not be public knowledge but if 999 is called the local defibrillator holders will automatically be texted to respond to the emergency if they are available. We have three such holders in the village. We are shortly to have a defibrillator installed in the EYSC building kindly donated by the League of friends in Cranleigh. This defibrillator is one for use by the general public, it talks you through what to do. Although training is not necessary it does help for people to familiarise themselves with the machine in order to have the confidence to use it in an emergency. For this reason St Johns Ambulance will be holding familiarisation sessions in the EYSC and the dates will be advertised later this year.

The winter storms have left a lot of debris around the village paths and roads and our Village Caretaker does his best to keep on top of everything that has to be done. It has been commented on that people are not picking up after their dogs as often as needed especially along Mapledrakes Road. The Parish Council ask that owners could pay a little more attention to their dogs and pick up where necessary and as most of you are probably aware free dog poo bags are available in the recreation ground from dispensers.

The Affordable Housing Survey commissioned by the Parish Council in partnership with Surrey Community Action was sent out to establish your views on the matter of providing affordable housing in Ewhurst and Ellen's Green. We have not yet received the results of this survey from Surrey Community Action but we hope to be able to publish these results after the next Parish Council meeting on 17th February 2014.

Finally the Annual Parish meeting this year will be held on Wednesday 30th April 2013 in the Village Hall at 7.30pm. We hope you will want to come along to enjoy the talks given by local people and the informal chat afterwards with members of the Parish Council. Drinks and nibbles will be served.



**Are you worried about your child's literacy and numeracy skills?**

We are a renowned independent school specializing in helping intelligent children struggling with basic skills. We are happy to advise.

**Ring us on 01306 731464**

Moon Hall School  
Pasturewood Road  
Holmbury St Mary  
Dorking  
Surrey  
RH5 6LQ



**LOCAL  
GARDENER**

**GRASS CUTTING  
STRIMMING  
PRUNING  
WEEDING  
LEAF BLOWING**

**TONY WALKER  
07729992674**



**JUNIPER**  
FENCING LTD

All Types of Fencing Supplied and Erected

**JUNIPER HOUSE  
30, CLAPPERS MEAD-  
OW,  
ALFOLD, CRANLEIGH,  
SURREY  
GU6 8HH**

POST AND RAIL,  
GATES,  
CLOSEBOARD,  
PANELS,  
DEER NETTING,  
RABBIT WIRE

**PHONE. 01403752265  
MOBILE. 07841450015  
FAX. 01403753490  
Email. juniperpeter@aol.com  
WWW.JUNIPERFENCING.CO.UK**

## nEWs and viEWs from the churches in Ewhurst

---

to enjoy the talks given by local people and the informal chat afterwards with members of the Parish Council. Drinks and nibbles will be served.

In April the Parish Council meeting usually held on the third Monday every month is to be postponed until 28th April as the third Monday falls on a bank holiday in this month. Agendas and minutes for our Parish Council meetings can be found on the village website. [www.ewhurst.org](http://www.ewhurst.org).

Please do e-mail [clerk.epc@btinternet.com](mailto:clerk.epc@btinternet.com) or telephone on 01483 267646 if you have any queries for the Parish Council. If you would like to receive the Parish Council E-Bulletin then please let the Clerk have your e-mail address. The Parish Council's E-Bulletin is a brief e-mail newsletter on current events and urgent matters which is sent out as often as needed.

Following the **Housing Needs Survey** which went out to all households in Ewhurst and Ellens Green in October last year, the results are in. 80% of respondents were in favour of the principle of developing affordable housing for local people and 21 local households were identified as being in housing need. The findings were presented to the Parish Council at the February meeting.

### **Ewhurst Village Development – Planning for the Future**

A plan is being prepared by the Parish Council and shortly residents will be asked their views on this initiative. Do please take the opportunity to make your comments known. Details will be publicly posted including EPC e-Bulletin.

### **EWHRST HORTICULTURAL SOCIETY**

[www.ewhursthortsoc.org.uk](http://www.ewhursthortsoc.org.uk)



On 11th March we have a talk with slides "Grasses and grass effect plants", by Mr Brian Fisher. Held in the Glebe Centre 8pm with raffle and refreshments.

Saturday 5th April brings us to our Spring Show - Village Hall 2.30pm, with presentations, auction of donated flowers etc. and raffle at 4.15pm. Contact Hilary 276713 for details if required.

Our plant sale will be held on 10th May in the village hall 10am - noon. Bedding plants are pre-ordered with a 10% discount to members. If you are interested please contact John on 271812 or e-mail [dyball@ewhursthortsoc.org.uk](mailto:dyball@ewhursthortsoc.org.uk). We would appreciate any spare garden plants or cuttings you may have for our members table.

This year our 121st Summer Show will be held on the recreation ground on 12th July in conjunction with the Carnival. Now is the time to start thinking about growing for showing. All details will be found on the web site.



Cranleigh Choral Society

## Cranleigh Choral Society's Spring Concert

**Saturday 29th March 2014**

with

Birgit Rohowsky (Soprano)

Marcus Pashley (Alto)

Graham Wili (Tenor)

Thomas Lydon (Bass)

Merriman Concert Orchestra,

Conductor Catherine Beddison

**At The Emms Centre, Cranleigh School at 7.30**

The concert features a mixture of old and new: a well-established favourite, Haydn's *Missa Cellensis*, together with *Sunrise Mass* written in 2008 by the exciting Norwegian composer Ola Gjeilo. The choir will be conducted by Catherine Beddison and joined by the Merriman Concert Orchestra and soloists including Marcus Pashley. Tickets £12 from 07973 772812, or on the door.

Visit our website: [cranleighchoralsociety.org.uk](http://cranleighchoralsociety.org.uk)



### **The Bulls Head** village pub & dining

The Street, Ewhurst GU6 7GD Phone 01483 277447 [WiFi Available](#)  
[www.thebullsheadhotel.com](http://www.thebullsheadhotel.com) email: [info@thebullsheadhotel.com](mailto:info@thebullsheadhotel.com)

#### Every Day

Open for coffee, croissants & bacon sandwiches from 10.30am

Lunch served 12-2, Monday-Saturday

Dinner served 6-9 pm, Monday-Saturday

#### Every Friday

Takeaway Beer Battered Fish & Chips - £6.95

Mushy Peas & Home-made Tartare Sauce also available

Pop in to order or call 01483 277447

#### Sundays

Food served all day until 9.00pm

3 Course Sunday Lunch £17.95

#### Upcoming Events

St PATRICK'S, Saturday 15<sup>th</sup> March, with Cranleigh Folk Group

MOTHER'S DAY, Sunday 30<sup>th</sup> March

ITALIAN NIGHT, Saturday 12<sup>th</sup> April

Cranleigh Folk Group, first Friday of the month

Quiz Night, first Monday of the month

Curry Night, third Tuesday of the month

Drop in to  
**PLAY THE ORGAN! DAY**  
St Mary's Quarry Street, Guildford, GU1 3UA  
Saturday 15<sup>th</sup> March 11 am to 5 pm

Demo pipe and electronic organs  
Short recitals on the hour by students  
Organists to chat to about learning the organ  
Find out more about the FREE taster lessons!

4 pm Recital Philip Scriven, International organist

Admission free to the Day. Final recital £5 (students free)  
Refreshments

Guildford Spring Music Festival Organ Series 12-15 March  
[www.gsmf.org.uk](http://www.gsmf.org.uk)

---

Guildford Choral Society & Brussels Choral Society  
Bournemouth Symphony Orchestra  
Conductor Jonathan Willcocks  
with  
Diana Moore – Mezzo Soprano  
Andrew Staples – Tenor  
Marcus Farnsworth – Bass

**ELGAR: The Dream of Gerontius**

**Saturday 15<sup>th</sup> March**  
**Guildford Cathedral at 7.30 pm**

Elgar's undoubted choral masterpiece with dramatic choruses,  
stirring orchestral writing and the poignant and moving  
concluding, "Angel's farewell"



# FUN BINGO NIGHT

In aid of Rainbow's End Pre-School

(registered charity number 298620)



**Friday 14<sup>th</sup> March 2014**

at Ewhurst Village Hall

Doors open 7.30pm, 'eyes down' 8pm

Tickets £10 each (includes all bingo books).

Bring your own refreshments and glasses.

Raffle taking place on the night

For tickets or info. contact Paula on 01306 627204,  
[rainbowsendpreschool@gmail.com](mailto:rainbowsendpreschool@gmail.com) or 01483 808488





### Pre-School News

At Rainbow's End Pre-school this New Year we have certainly been making the most of our covered garden area and our set of water-proof trousers. Puddle jumping is a favourite activity of ours although we need to remember not to do it without wellies on.

As I write the winter pansies that the children planted are still going strong and the bulbs are shooting up waiting for spring to start. The children have been taking pictures of their progress as well as others around the village hoping to create a 'change over time' display once they've flowered.

Our well attended curry and quiz night raised a record breaking £1847 and we would like to thank everyone who came and made a difference to the children's learning at Rainbow's. With some of the money we have booked a touring theatre company to visit the children and perform a play all about staying safe in and around the home. This sort of experience would not be possible without successful fundraising.

Talking of fundraising our next village event is our now annual Bingo Night on Friday 14<sup>th</sup> March 2014. It promises to be a good evening out if the last two years are anything to go by. Please spread the word to your family and friends.

Looking ahead we are now showing people round and taking registration forms for September 2014. Please contact us if you'd like to book an appointment or find out more about Rainbow's End.

[www.rainbowsendpre-school.org.uk](http://www.rainbowsendpre-school.org.uk)  
[rainbowsendpreschool@gmail.com](mailto:rainbowsendpreschool@gmail.com)  
Office: 01483 808488



## Bullimores

### Chartered Accountants

Your Local, Friendly & Efficient Business Advisers

- Inheritance Tax & Executorship
  - Financial & Tax Planning
- Accounting • Audit • Taxation
- Business Start-ups • Payroll
- IT Accountancy Services

Whether your needs are business or private,  
please contact us for a free, no obligation, consultation  
on 01306 880880 or email: [partners@bullimores.co.uk](mailto:partners@bullimores.co.uk)

Old Printers Yard, 156 South Street, Dorking, Surrey, RH4 2HF  
[www.bullimores.co.uk](http://www.bullimores.co.uk)

### **MJDH** **PAINTING & DECORATING**



**Marius Henderson**

*"A brush with the best!"*



Please phone or write  
to arrange a free estimate:

Mobile: 078 129 568 51

Home: 01483 274162

14 Dukes Close, Cranleigh, GU6 7JU

Email:

[mariushenderson@hotmail.com](mailto:mariushenderson@hotmail.com)

### **Septic Tank Problems?**

If so, have you considered  
converting your existing tank  
to a sewage treatment plant  
at a fraction of the cost of a  
new plant?

Also:

- Drains unblocked
- CCTV surveys of drains  
and Drain repairs

**Charles Humphrey and Son**

**Drainage Engineers**

**Farnhurst, Alfold.**

Office: 01483 277777

Mobile: 07958 924616



### **News from Ewhurst CE Infant School**

The school pupils and staff have enjoyed a busy start to the year. The constant rain has not dampened our spirits, and the children in Years 1 and 2 have carried on their Forest Schools afternoons at Sayers Croft, despite the mud! These outdoor education sessions have proved extremely popular and have had a very positive impact on the children's learning, as they learn to manage and take risks; raft-making, natural sculptures and fire-making coming top of the list of activities which they most enjoyed. Our Reception children also undertake weekly Forest Schools sessions, which take place in our Jubilee Garden. We have school trips for all three classes planned this term – Cherry Class will again be visiting RHS Gardens at Wisley to look at the butterflies in the Glasshouse, Holly Class will enjoy a Story Walk and Eye Spy Nature Trail around Painshill Park, and Apple Class will be visiting Amberley Working Museum. The children benefit greatly from these trips, and as always we are very grateful for the high level of parental support on the outings, without which they could not take place.

We are also very grateful to the parents who have taken the time to help reorganize and tidy our wonderful library over the past few weeks. It is delightful to see how much the library is used by families each day; this is evident in the progress the children make in reading, which is greatly supported by parents listening to their child read on a daily basis. This half term we will be holding our annual Spring Sponsored Readathon, which last year raised £586.00 to purchase new books for the school, and always generates excitement and enthusiasm for reading in the children.

At our latest PTA meeting, it was announced that £7500 had been raised last year, which is a fantastic total. The majority of this has provided the children with a wonderful range of resources to support their learning, and the staff members and I are extremely grateful for this high level of support. The School Council were delighted to receive approval from the PTA for their request for some new playground equipment, including another trike! The PTA are organizing another Quiz Evening on March 21<sup>st</sup> in the school hall, which is always a popular event. Please look at our website for further information.

Our Open Morning Tours have again been very busy, as the school continues to be a very popular choice for prospective parents. The children always enjoy welcoming them to their classrooms, and we are pleased with the positive feedback from our visitors.

As half-term approaches, the children will begin to plan and make their bonnet or hat for our Easter Bonnet Parade, which takes place at the End of Term service in the church. It is wonderful to see the effort and creativity on display at such a traditional occasion.

Please take the time to visit our school website [www.ewhurst.surrey.sch.uk](http://www.ewhurst.surrey.sch.uk) which is continually updated with news, photos and information, or for any further information or help please contact the school office on 01483 277291 or email us at [info@ewhurst.surrey.sch.uk](mailto:info@ewhurst.surrey.sch.uk).  
Jane Dyer Headteacher

**nEWs and viEWs from the churches in Ewhurst**

|                                                                                                                                                                                                                                |                                                                                                                                                                                                                                                                                                                                                                                                                                                                                                                                                                                                                                                                                     |
|--------------------------------------------------------------------------------------------------------------------------------------------------------------------------------------------------------------------------------|-------------------------------------------------------------------------------------------------------------------------------------------------------------------------------------------------------------------------------------------------------------------------------------------------------------------------------------------------------------------------------------------------------------------------------------------------------------------------------------------------------------------------------------------------------------------------------------------------------------------------------------------------------------------------------------|
| <h2>EWHRST VILLAGE CLUB</h2> <p>POOL TABLE, BINGO,<br/>DARTS, MUSIC NIGHTS,<br/>WII GAMES, SNOOKER ROOM,</p> <p>LICENSED SOCIAL CLUB</p> <p>NEW MEMBERS WELCOME</p> <p>FAMILY FRIENDLY</p> <p>1A DOCKLEY ROAD 01483 277300</p> | <h3>JENNIFER MARGRAVE<br/>SOLICITORS LLP</h3> <p>Wills, Trusts &amp; Probate<br/>Lasting Powers of Attorneys<br/>Court of Protection matters<br/>NHS funding issues</p> <p>Office hours: Monday to Friday 9am-5.30pm</p> <p>The Old Post Office,<br/>130 Epsom Road,<br/>Guildford, GU1 2PX</p> <p><b>Tel: 01483 562722</b><br/><b>Fax: 01483 604222</b></p> <p>E: <a href="mailto:enquiries@jennifermargrave.co.uk">enquiries@jennifermargrave.co.uk</a><br/>We advise on law but do much, much more!</p> <p><a href="http://www.jennifermargrave.co.uk">www.jennifermargrave.co.uk</a><br/>Authorised and regulated by the Solicitors Regulation Authority<br/>SRA No. 533213</p> |
|--------------------------------------------------------------------------------------------------------------------------------------------------------------------------------------------------------------------------------|-------------------------------------------------------------------------------------------------------------------------------------------------------------------------------------------------------------------------------------------------------------------------------------------------------------------------------------------------------------------------------------------------------------------------------------------------------------------------------------------------------------------------------------------------------------------------------------------------------------------------------------------------------------------------------------|

|                                                                                                                                                                                                                                                  |                          |                                                                                      |
|--------------------------------------------------------------------------------------------------------------------------------------------------------------------------------------------------------------------------------------------------|--------------------------|--------------------------------------------------------------------------------------|
|                                                                                                                                                               | <h2>HOUSE CLEARANCE</h2> |  |
| <p>ALSO SINGLE ITEMS PURCHASED</p> <p>FOR A FRIENDLY AND CONFIDENTIAL SERVICE</p> <p>CONTACT</p> <p><b>CRANLEIGH ANTIQUES</b></p> <p><b>TEL: 01483 277318</b></p> <p><b>PROMPT AND RELIABLE SERVICE</b></p> <p>PROBATE VALUATIONS UNDERTAKEN</p> |                          |                                                                                      |

**In Our Midst ~ Sue Handley  
Champion Chairman**

Few people have had such an effect on the life and activities of the village as Sue. She has helped start a number of the groups and activities without which the village would be much the poorer, not to mention her work with the village school, which owes its very existence to her single-minded support and guidance.



It was during the period of America's "Isolationist" policy that Sue enjoyed what she describes as an idyllic childhood growing up on Long Island, New York, in a house with magnificent views across the Sound. Her father, an engineer by profession, saw active service in the army in Washington D.C. and after the 1941 attack on Pearl Harbour he was sent to Fort Hood, Texas to work on tank destroying vehicles. The family joined him there and Sue continued her schooling in Texas and then Washington before gaining entry to the beautiful Vassar College on the Hudson River in up-state New York. After majoring in Chemistry she worked in New York as a medical statistician at a hospital research centre monitoring the case histories of cancer patients. I've forgotten all the Chemistry I ever knew she says.

In 1952 Sue left New York to travel with two college friends, going first to Norway then on to Paris. It was here that she reconnected with husband-to-be Geoff who contacted her out of the blue, eighteen months after their previous meeting. In 1961, now married, they came to live in Tamworth from where Geoff travelled to work in Leicester. By 1965, with their first two boys Will and Sam, Geoff's work had taken them to Strathaven in the Clyde Valley where their other two children, Ellen & Chris, were born.

The family moved to The Paddock in 1973 and Sue enjoyed her role as a mother of young children and particularly enjoyed meeting other Mums at the playgroup. Together with neighbours, the Prices and the Barnes, she started a branch of the decorative and fine arts society, NADFAS and meetings were held in Bucks Green village hall as the National Association would not permit a new group any closer. In 2000 they were able to move to the enlarged Cranleigh Arts Centre. As a founder member and leader, she proudly displays her commemorative gift, a large jug inscribed, "Life Member, Champion Chairman". Around this time, Sue and neighbour Marion Heathcote, started the Ewhurst Evening WI as many working women could not attend the existing Afternoon WI. Now it remains the only W.I. group in the village. In addition she worked for twenty years for the Surrey Federation of WIs as a volunteer county organiser at the Denmark Road headquarters.

nEWs and viEWs from the churches in Ewhurst

## SURREY RESTORATION



Specialists in high quality restoration of antique furniture, objets d'art and period house restoration.

Estimates are free.

Commissions also undertaken

Please contact us at our workshop on 01932 868883 or our mobile 07711 635484

The **Hoppa** provides a range of services for anyone in the community – REGARDLESS OF AGE or ABILITY – who does not have easy access to Public Transport. This means young and old alike as well as those in between, and anyone with a disability, regardless of whether it is permanent or temporary.

“Hop on a HOPPA today!”

**Tree Surgery ~ Hedge Cutting ~ Garden Maintenance**  
All types of fencing supplied & erected, Logs for Sale  
Stump Removal ~ Groundwork ~ Landscaping

**G. B.**  
**FENCING & TREE SURGERY**  
**SPECIALISTS**

Tel: 01403 824048  
Mobile: 07714 689824

**GUILD OF MASTER CRAFTSMEN**

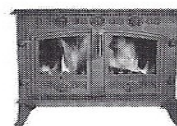
*Free Estimates • Fully Insured*

**Checkatrade**

## G.B. STOVE INSTALLATIONS

Installation of all wood burning appliances  
Installation of twin walled flexible flue liners  
Service and Maintenance

Logs for Sale  
01403 824048  
07714 689824



## **nEWs and viEWs from the churches in Ewhurst**

---

With children at the village school, Sue joined the PTA and school governors and thus began working for her favourite cause which she continues to this day. During the illness of the Rector and the ensuing interregnum period, Sue was elected as chairman of governors. At that time, a change in Surrey's education policy resulted in the total number of small schools being reduced to reflect a fall in pupil numbers. The authority sought to close Ewhurst Infant School, arguing that numbers were down and that the village children could travel to schools in Cranleigh. The proposed building of Larkfield and the possible closure of Peaslake School meant they could present a strong case for keeping it open. After many weeks of sometimes bitter argument, the county decision was reversed and they had saved the school. She remembers with fondness working particularly with governors Jack and Joan Harbottle, Mary Band and Rector Denis Ackroyd.

Sue's support for the school led to the now regular Ewhurst Secret Gardens weekends. Volunteers open their gardens to the public and teas and plant sales are available at some. Sue and Geoff's garden is always open for people to enjoy the magnificent view with their tea. Originally set up to raise money for a trust to provide extra funding if pupil numbers were low, it has now diversified to raise money for wider local child-centred activities. Approximately £40,000 has been raised over a twenty year period.

The Village Society was formed to bring people together and to be a focus for talks and events about village life in Ewhurst. To date, more than 60 copies of the Village Society Newsletter have been edited and produced at home by Sue and delivered free of charge to every household. Part funded by the Parish Council, it provides a useful source of news and information for Ewhurst organisations and local government. In addition occasional meetings take place in the EYSC building to which everyone is invited.

At home their flock of Jacob sheep is still a great source of interest and enjoyment. We actually got them by accident she says. A neighbour was moving away and in a moment of weakness they decided to take on her existing flock. Little did they know what they had let themselves in for as Jacob's sheep are fast, agile movers and don't take easily to being penned or herded. Nowadays they do get help but are both still actively involved. I heard how Geoff's electric buggy can be a useful steed for rounding them up.

Don't blow my trumpet too much she said. Well it's difficult not to be full of admiration when faced with her many achievements. Without Sue's energy and leadership Ewhurst would be a very different place.

*Geoff Harry*

**LOCAL HISTORY CORNER by Janet Balchin**

**Folly Hill Nursery School during the Second World War**

The Parish Council was contacted recently, by Mr Alan Lowe, whose mother Lily (1904 – 1996), worked as a volunteer at the Nursery School at Folly Hill, from 1941 to 1943. The school had been evacuated from Blackfriars Road, London to Ewhurst during the Second World War. Lily had been asked in 1950 to give a talk to the local WVS ‘Women’s Hour’ on her work, and had written a script, which Mr Lowe has passed on, along with some photographs of children and staff. Alan, who was born on 3<sup>rd</sup> September 1939 - the day war broke out, was with his mother at Folly Hill for the two years.



The nursery had been evacuated from London in 1940 and catered for children aged 2 – 5 years. At 5 the children left to go to private ‘billets’, like other evacuees. It had been a day nursery in London, but became residential in the country. Some of the children were or-

phaned or homeless, or their parents were unable to look after them because of war-time conditions. When Lily and Alan arrived in 1941 there were 31 children, and a large staff, including the Head and school staff, a nursing sister, a cook, kitchen help, maid, two cleaners, laundress and gardener. The domestic staff had probably been recruited locally. Volunteers also came from Lloyds Bank – the Executor and Trustee Department had been evacuated, along with staff, to Ewhurst Place nearby. The girls from Lloyds also undertook small mending jobs.

Lily refers to the children as the ‘Babies’, who were just over two years old; the ‘Bigs’, who were nearly five; and the ‘Middles’, who were in between. A typical day began at 7.15am. The older children were expected to dress themselves and keep their clothes neatly in baskets. Even the two year olds were encouraged to learn to do things for themselves. Dressing was made easier by the replacement of tapes from the necks of vests with elastic, so that they could be pulled on. At meal-times the children helped to serve the food, on a rota. After lunch the younger children had a rest with their beds put out on the terrace for fresh air; or under the loggia, if wet. Outdoor play was also very important.

New arrivals continued throughout out the war and had to be settled in. Lily wrote “The little things, looking somewhat bewildered after their journey, and surrounded by parcels of clothes, gas masks and toys, were soon fed, washed and put at ease. Extra room had to be found somehow for these mites to be isolated at night for a while, temperatures being taken night and morning and a close watch kept for rashes or any signs of infection.” Many of the children had

## nEWs and viEWs from the churches in Ewhurst

---

isolated at night for a while, temperatures being taken night and morning and a close watch kept for rashes or any signs of infection." Many of the children had come from poor backgrounds and health issues were an important consideration. They were regularly dosed with cod liver oil. Following an outbreak of infectious disease the local hairdresser refused to come again and it became Lily's job to cut all the children's hair.

The pre-war history of the nursery is also interesting. It was founded in 1929 by the Women's University Settlement. The 'University Settlement Movement' had begun in the 1880s prompted by the Rev. Samuel Barnett's call for university-educated young people to 'settle' in poor areas and use their skills to help the communities. Actually living in the community was seen as an important part of understanding the community's needs. The new women's colleges were quick to take the lead and women from Girton and Newnham Colleges at Cambridge, Lady Margaret and Somerville Colleges at Oxford along with Bedford and Royal Holloway Universities set up the Women's University Settlement in 1887. Its objective was to "*promote the welfare of the poorer districts of London, more especially of the women and children, by devising and advancing schemes which tend to elevate them, and by giving them additional opportunities in education and recreation*". The women lived at the settlement rent free in exchange for their work in the community. In

1961 the settlement changed its name to the Blackfriars Settlement and it continues to work with the local community today.



### **Ewhurst History Society Spring Programme.**

18<sup>th</sup> March 2014 - *Film Night* - Circle Eight

15<sup>th</sup> April 2014 - '*Betchworth Castle*' – Martin Higgins

20<sup>th</sup> May 2014 - Annual General Meeting, followed by '*The Restoration of Longhurst Lodge*' - Vanessa Ford

And looking ahead, our **Summer Outing** will be a coach trip on **6<sup>th</sup> August 2014** to the **Houses of Parliament** for a guided tour. With pick ups from Hazelbank and The Bulls Head. Cost £20.00. For more information contact Hazel Munro Tel 275388, e-mail - [hazand@tiscali.co.uk](mailto:hazand@tiscali.co.uk)

Janet Balchin, Chairman

Tel 277342, e-mail – [ewhursthistory@btinternet.com](mailto:ewhursthistory@btinternet.com)

## We have moved!

**Come and visit us at our new showroom. Only seven miles away at Broadbridge Heath.**

Remember we offer **FREE** car pick up and return for servicing and MOTs on all makes and models of cars...



**Station Garage**  
Since 1973



 0843 320 1719 (Local rate)  [www.horshamskoda.co.uk](http://www.horshamskoda.co.uk)

 [www.facebook.com/stationgarages](https://www.facebook.com/stationgarages)  @StationGarage

78 Billingshurst Road, Broadbridge Heath, Horsham, RH12 3LP



**WILD  
WOOD**  
— JOINERY —



**Handmade Bespoke Joinery**  
Specialising in; Windows, Doors, Wardrobes,  
Bookcases, Radiator Covers and Window Seats



[www.wildwoodjoinery.co.uk](http://www.wildwoodjoinery.co.uk)  
T: 01483 202143 M: 07506 699887 E: [wildwoodjoinery@gmail.com](mailto:wildwoodjoinery@gmail.com)  
Unit 2 Burrows Lea Farm, Hook Lane, Shere, Guildford GU5 9QQ



---

**nEWs and viEWs from the churches in Ewhurst**

---

**An Invitation to all Ladies**

Please join us for our Special Event night  
THURSDAY 10<sup>th</sup> APRIL 2014  
8.00pm in The Village Hall, Ewhurst

Our Speaker for the evening will be  
Anne Chance, OBE  
“A Petticoat Pilot”

Learn about the local and National events in which we are involved  
Together with information on courses available at Denman College in  
Oxfordshire.

Refreshments will be served

***Ewhurst Evening W.I.***

In November Ewhurst WI held its AGM followed by a friendly chat enjoyed by our members. At our December meeting we had a visit from Johnathon Jones who is the Town Crier at Farnham. He came along dressed in his very colourful uniform and told us about his work and the events he attends. At the end of his very entertaining talk he gave an example of his 'shout'. The evening ended with a delicious buffet contributed by our members. In January Mrs Caroline Frost came along with some of her decorated cakes and gave us numerous tips on how we could create some of the designs

Ewhurst WI is a social group of ladies whose meetings are held in Ewhurst Village Hall on the 2nd Thursday of each month at 8pm. Our meetings are entertaining and informative with a wide range of speakers and we leave time for refreshments and a chance to chat and to get to know one another a little better. Our activities are not confined to the monthly meetings. We arrange 'Lunching Ladies' outings, walks and visits to gardens and the theatre etc. and Denman College holds a wide variety of residential courses which members may attend.

In February our speaker will be Colin Reed who is to take a humorous look at 19th century medicine and in March, Derrick Fulford, is to talk about antique clocks and watches. At our April meeting, Anne Chance OBE is to give a talk on a 'Petticoat Pilot'. On this night, 10 April 2014, we are holding a special open night, so we do hope you will come along and join us, either on your own or with a friend or neighbour. For more details please ring Lyn Southgate on 01483 548966. We look forward to seeing you.

nEWs and viEWs from the churches in Ewhurst

| RAINFALL                                   |      |       |       |
|--------------------------------------------|------|-------|-------|
| Quoted in millimeters ( 1 inch = 25.4 mm ) |      |       |       |
|                                            | Nov  | Dec   | Jan   |
|                                            | 63.4 | 187.3 | 269.0 |
| Temperature degrees centigrade             |      |       |       |
| Maximum                                    | 15.0 | 11.4  | 11.7  |
| Minimum                                    | -3.2 | -2.8  | -2.1  |



Surrey  
Hills  
PC

Your local & affordable service  
for home and business

Laptop, Desktop, Mobile and Tablet  
PC & Apple

- ❖ Performance improvement
- ❖ Virus removal
- ❖ Network & Broadband
- ❖ Hardware & LCD repairs
- ❖ Affordable websites
- ❖ Purchase advice

No VAT  
No fix = no Fee

Established 2008

01306 400121

[david@surreyhillspc.co.uk](mailto:david@surreyhillspc.co.uk)

DM HANDYMAN  
SERVICES

FOR ALL YOUR  
MAINTENANCE NEEDS

Landscaping • Fencing  
Kitchens • Carpentry • Plumbing  
Painting and Decorating

General household  
maintenance indoors  
and out

01403 823687

07795 097102



Membership no. A111556

### Come and try your hand at Bowls



Have you thought of playing bowls? You do not have to be old: the best bowlers are young. Bowls is an easy game to learn, is not expensive, and you do not have to be particularly fit. It is played by men and ladies equally and is social as well as competitive.

Ewhurst has one of the finest bowling greens in

Surrey, a smart Clubhouse and a thriving Club. Refreshments are served during games and there is a bar. The Club runs social events throughout the year, and in the winter the popular Short Mat Bowls is played in the Clubhouse.

The Club would welcome more Ewhurst bowlers. We have an open and bring-a-friend day on Saturday 17 May, starting at 2 pm, for you to come and try your hand at bowls. There is a four week course on Monday afternoons starting on 3 June, and separate coaching is also available. Alternatively drop by when we are playing: the green is at the south end of the Recreation Ground with a car park signposted off Cranleigh Road. For more information please contact John Greenwood (e-mail [jandcgreenwood@hotmail.com](mailto:jandcgreenwood@hotmail.com), Tel. 277558) or Hilary Mitchell

#### **EWHURST MONDAY CLUB**

We meet at the Glebe Centre, Ewhurst on the third Monday of the month at 2.00pm for a 2.15pm start.

Monday

March 17th            The Wey and Arun Canal talk by Jeremy Watts

Monday

April 14th (note 2nd Monday)

Talk by Janet Somerville

Monday May 19th

To be Arranged

President / Treasurer: Jean Dodd 278184

Outings and Programme Organiser: Jean Sandow 273345

Subscriptions £3 per year. Tea and Cakes / Scones £1

Visitors £1 Come and bring your Friends

**Ewhurst Players present 'Tom Jones'**

***A play by Joan Macalpine based on a novel by Henry Fielding***



Tom Jones, played by Barry Harrison-Fudge, is a young, handsome man of dubious parentage with a talent for attracting women. A sharp contrast to his prudish bore of a step brother Blifil, played by Daniel Williams, with whom an intense rivalry evolves over love interests and

inheritance. Barry is a versatile actor who quickly connected with the audience through his intimate dialogue and maintained their favour through his indiscretions as a loveable rogue whose innocence everyone wanted to count upon. Convincing character development was required for the role of Blifil and Daniel proved he is maturing as an actor with his portrayal of the increasingly desperate and manipulative brother.

The play begins in Somerset with authentic accents provided by Roland Butcher as Squire Weston and Sophie Shickell as the buxom wench, Molly Seagrin. Molly's flirtatious antics with Tom were hilarious leading on to his tutor's (Thwackum played by Michael Richardson) infidelity through to her downfall and simpleminded response that 'A man's not a man 'till he got himself a bastard.' Squire Weston fiercely protects his daughter Sophia's chastity, giving the audience a strong portrayal of a man obsessed with improving his land and wealth.

The characters check into to the Lion Inn, each attempting to escape or locate their loved ones. Susan the maid, played by Catherine van't Riet, orchestrates a quickfire comedy of mistaken identity, misdirections and bedroom antics whilst convincingly demonstrating her attraction to Tom and engaging the audience's sympathy when her affection is thwarted. Here we meet Mrs Jenny Walters entering a passionate affair with the main character. Played by Wendy Davies, she energetically uses the excellent stage set between the bedroom, corridor and hallway allowing the audience to imagine a rambling country house.

Tom continues to pursue Sophia to London where she has attempted to escape a marriage proposal from Blifil. The demure Sophia, played by Julia Allan-Patel, provides a consistently innocent character whilst Tom continues

## **nEWs and viEWs *from the churches in Ewhurst***

---

to pursue Sophia to London where she has attempted to escape a marriage proposal from Blifil. The demure Sophia, played by Julia Allan-Patel, provides a consistently innocent character whilst Tom continues to be distracted by the lonely Mrs Fitzpatrick who goes on to betray him. A fight, a death and Tom finds himself with a hangman's noose around his neck, the suspense building through skillful lighting and sound effects. Squire Allworthy is given the strong voice of reason by Barry Heathcote who expertly ensure justice is delivered and provides the audience with an explosive finale.

Ewhurst Players should be congratulated on their authentic period costume and elaborate wigs. The large cast provided an enjoyable, fast moving and humorous evening of entertainment expertly directed by Marion Heathcote. A suitable achievement to mark 40 years of entertaining the residents of Ewhurst.

### **Ewhurst Players - Forthcoming Events**

#### **Spring Production - May 14<sup>th</sup> – 17<sup>th</sup> 2014**

It has been decided that our May production this year will see the return of our popular super evening format with a cracking little 1 act comedy - Last Panto In Little Grimley by David Tristram + 2 additional short 1 act plays to entice the audience with some variety and something a bit different. Be sure not to miss it!! Box office details to be announced on our website in due course and in our March / April newsletter.

#### **40<sup>th</sup> Anniversary of the Players**

Preparations are now well underway for our 40th anniversary celebrations. The date is now confirmed as Sunday July 13th 2014 at the recreation ground in Ewhurst. The event will be held in a Marquee and details are not yet formalised, however, please put this date in your diary NOW. More information will be published on this milestone event for The Players in due course.

2013 was a busy and successful year for the group with some challenging productions. We hope to smash it again in 2014 - our anniversary year. Thank you for your continued support, but please remember that if we are to keep our tradition of cracking amateur drama for our village and the surrounding area then we will need new active members to come on board. So if you have ever considered having a go, either on stage or backstage then please don't be shy.

Contact our secretary for details of how you can get involved in our exiting, friendly group.

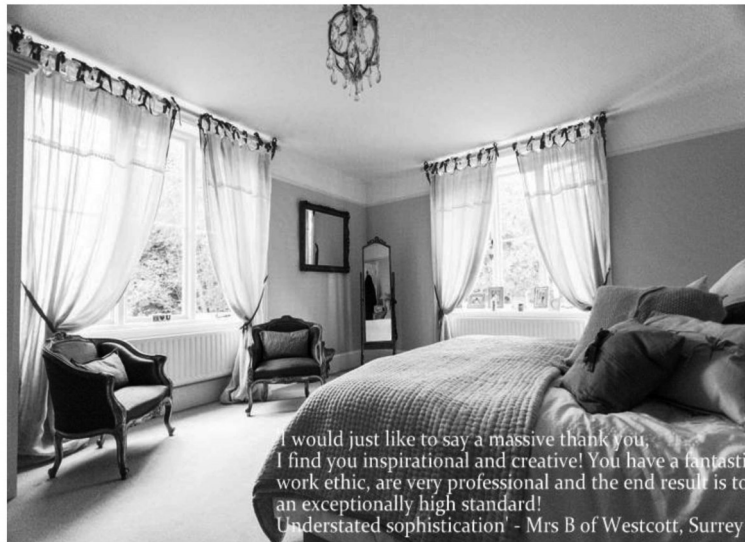
contact - secretary@ewhurstplayers.com 01483 277034

# TAILOR~MADE curtains & blinds

Bespoke curtains, Roman blinds, soft furnishings, fabrics, poles, tracks & pelmets plus made to measure blinds based in Ewhurst.

Free advice, measuring, quotes & temporary blinds provided during make up.

Full Installation service available, plus personal wedding list service & gift vouchers.



I would just like to say a massive thank you,  
I find you inspirational and creative! You have a fantastic  
work ethic, are very professional and the end result is to  
an exceptionally high standard!  
Understated sophistication' - Mrs B of Westcott, Surrey

[WWW.TAILOR-MADEHOME.CO.UK](http://WWW.TAILOR-MADEHOME.CO.UK)

Ewhurst 389614    [christina@tailor-madehome.co.uk](mailto:christina@tailor-madehome.co.uk)

## nEWs and viEWs from the churches in Ewhurst

### Final Note from the Editor:

Hopefully by the time you receive your March edition of nEWs and viEWs we shall all have dried out from our very wet and windy winter and we can look forward to a warm, dry spring.

I am happy to receive articles and information to publish in nEWs and viEWs, so if you have any items of interest please either e-mail them to me at :

avery265@btinternet.com or put into the mail box at the back of the Parish Church by May 3rd.

We hope you will support all our local advertisers . If you wish to place an advertisement, please contact Val Henry on 01483 275380 or val.henry@mgownersclub.net.

Jackie Avery  
01483 268694

|                                                                                                                                                                                                                                                                                                                                                                                                                                                                                                                                                                                                                                                                                                                                                                                                                 |                                                                                                                                                                                                                                                                                                                                                                                                                                                                                                                                                                                                                                                                                                                                                                                                                                                                                                                                                                                                                                                                                        |                                                                                                                                                       |                                                                                                                                                                                          |
|-----------------------------------------------------------------------------------------------------------------------------------------------------------------------------------------------------------------------------------------------------------------------------------------------------------------------------------------------------------------------------------------------------------------------------------------------------------------------------------------------------------------------------------------------------------------------------------------------------------------------------------------------------------------------------------------------------------------------------------------------------------------------------------------------------------------|----------------------------------------------------------------------------------------------------------------------------------------------------------------------------------------------------------------------------------------------------------------------------------------------------------------------------------------------------------------------------------------------------------------------------------------------------------------------------------------------------------------------------------------------------------------------------------------------------------------------------------------------------------------------------------------------------------------------------------------------------------------------------------------------------------------------------------------------------------------------------------------------------------------------------------------------------------------------------------------------------------------------------------------------------------------------------------------|-------------------------------------------------------------------------------------------------------------------------------------------------------|------------------------------------------------------------------------------------------------------------------------------------------------------------------------------------------|
|  <p style="text-align: center;"><b>Peaslake Fitness Studio<br/>&amp; Dancing School</b></p> <p style="text-align: center;">BALLET / MODERN JAZZ<br/>FREESTYLE / THEATRECRAFT</p> <p style="text-align: center;">ADULTS' FUNKY<br/>DANCE CLASSES</p> <p style="text-align: center;"><b>ZUMBA</b><br/>FITNESS</p> <p style="text-align: center;">STEP / 50+ / BODY CONDITIONING<br/>POWER WALKING / PERSONAL TRAINING</p> <p style="text-align: center;">BIRTHDAY<br/>DANCE PARTIES<br/><i>ages 7 upwards</i></p> <p style="text-align: center;">PERSONAL<br/>DANCE LESSONS</p> <p style="text-align: center;">for further information call Avril<br/><b>01306 731182 / 07899 842727</b><br/>e: dancearamix@btinternet.com</p> | <p style="text-align: center;"><b>1<sup>st</sup> Revisualize 15%</b><br/>Visit Off</p> <p style="text-align: center;"><b><u>Skin Care, Beauty &amp; Holistic</u></b><br/><b><u>Treats</u></b></p> <table style="width: 100%; border: none;"> <tr> <td style="width: 50%; vertical-align: top;"> <ul style="list-style-type: none"> <li>• Facials</li> <li>• Wedding make up</li> <li>• Reflexology</li> <li>• Tinting</li> <li>• Threading</li> </ul> </td> <td style="width: 50%; vertical-align: top;"> <ul style="list-style-type: none"> <li>• Satin Hand Treatment</li> <li>• Thai face massage</li> <li>• Make up lessons</li> <li>• Gift vouchers</li> <li>• Indian head massage</li> </ul> </td> </tr> </table> <p style="text-align: center; font-size: small;">More treatment available ask for price list</p> <p style="text-align: center;"><b><u>Sashi Verrall:</u></b></p> <p style="text-align: center;"><b>Tel: 01403 822504 / 07761158436</b></p> <p style="text-align: center;"><b>Website: <a href="http://www.revisualize.co.uk">www.revisualize.co.uk</a></b></p> | <ul style="list-style-type: none"> <li>• Facials</li> <li>• Wedding make up</li> <li>• Reflexology</li> <li>• Tinting</li> <li>• Threading</li> </ul> | <ul style="list-style-type: none"> <li>• Satin Hand Treatment</li> <li>• Thai face massage</li> <li>• Make up lessons</li> <li>• Gift vouchers</li> <li>• Indian head massage</li> </ul> |
| <ul style="list-style-type: none"> <li>• Facials</li> <li>• Wedding make up</li> <li>• Reflexology</li> <li>• Tinting</li> <li>• Threading</li> </ul>                                                                                                                                                                                                                                                                                                                                                                                                                                                                                                                                                                                                                                                           | <ul style="list-style-type: none"> <li>• Satin Hand Treatment</li> <li>• Thai face massage</li> <li>• Make up lessons</li> <li>• Gift vouchers</li> <li>• Indian head massage</li> </ul>                                                                                                                                                                                                                                                                                                                                                                                                                                                                                                                                                                                                                                                                                                                                                                                                                                                                                               |                                                                                                                                                       |                                                                                                                                                                                          |



***Cranleigh  
Funeral Services***

**P. BENNETT Dip FD M.B.I.F.D.**

**IMMEDIATE ATTENTION  
24 HOURS A DAY**

---

**TEL: CRANLEIGH 01483 275758**

---

**FUNERAL DIRECTOR  
P. BENNETT Dip FD.**

***The Caring  
Family Owned Business***

**Sussex House Funeral Home,  
Ewhurst Road,  
Cranleigh  
MONUMENTAL MASONS**



**nEWs and viEWs from the churches in Ewhurst**

---

**St Peter & St Paul's Church Contact Numbers**

|                                                    |              |                                                 |        |
|----------------------------------------------------|--------------|-------------------------------------------------|--------|
| www.saintpeterandsaintpaul<br>whurst.org.uk        |              | PCC Secretary<br>Joanna Cadman                  | 268627 |
| Rector<br>Rev David Minns<br>dlkminns@talktalk.net |              | Sidesman's Guild<br>Anne Barrett-Lennard        | 277075 |
| Church Office<br>ewhustchurch@yahoo.co.uk          | 277584       | Bell Ringers Guild<br>Jan Jesson                | 276655 |
| Associate Ministers<br>Rev Tricia Hislop           | 274359       | Flower Guild<br>Rosemary Stewart                | 272814 |
| Rev Dr Tim Seller                                  | 01306 627548 | Readers Guild<br>Jane Harry                     | 275047 |
| Lay Minister<br>John White                         | 277663       | Women's Fellowship<br>Julia Stearnes            | 271419 |
| Church Wardens<br>Jane Harry                       | 275047       | Sunday Service Coffee<br>Rota                   |        |
| Colin Stewart                                      | 272814       | Pam Childs                                      | 277511 |
| Deanery Synod<br>Jackie Avery                      | 268694       | Parish Magazine:<br>avery265@btinternet.<br>com |        |
| Val Henry                                          | 275380       | Editor, Jackie Avery                            | 268694 |
| PCC Treasurer<br>Michelle Matthews                 | 267790       | Distribution<br>Fiona & John                    |        |
| Director of Music<br>Val Henry                     | 275380       | Morrison                                        | 273522 |
| Treasure Seekers<br>Jo Moore                       | 277278       | Advertising<br>Val Henry                        | 275380 |
| Parish Secretary<br>Geoff Harry                    | 275047       |                                                 |        |

**Ewhurst Baptist Church Contact Numbers**

|                                           |                                                                                                |        |
|-------------------------------------------|------------------------------------------------------------------------------------------------|--------|
| <b>Minister:</b><br>Rev. Simon Bodington  |                                                                                                | 495426 |
|                                           | <a href="mailto:minister@ewhurstbaptistchurch.org.uk">minister@ewhurstbaptistchurch.org.uk</a> |        |
| <b>Deacons:</b><br>Mrs Brenda Buchanan    |                                                                                                | 351127 |
| Mrs Cherry Matthews                       |                                                                                                | 277895 |
| Mr Colin Crick                            | Room Hire                                                                                      | 273125 |
| Mrs Glesni Pratt                          | Treasurer                                                                                      | 273844 |
| Ms Marian Copus                           | Worship                                                                                        | 267014 |
| <b>Church Office:</b><br>Jackie Bodington | Mothers & Toddlers Group                                                                       | 267878 |
| Hazel Jones                               | KIKS Club                                                                                      | 495426 |
| <b>Web Site:</b>                          | <a href="http://www.ewhurstbaptistchurch.org.uk">www.ewhurstbaptistchurch.org.uk</a>           | 267878 |

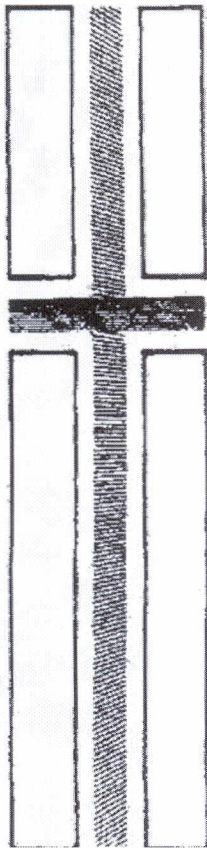
## nEWs and viEWs from the churches in Ewhurst

---

### USEFUL NUMBERS

|                                                         |                                                                                                                                                         |
|---------------------------------------------------------|---------------------------------------------------------------------------------------------------------------------------------------------------------|
| : Ewhurst C of E Infant School (Head Teacher Mrs Dyer)  | 277291                                                                                                                                                  |
| : Cranleigh C of E Primary School                       | 273286                                                                                                                                                  |
| : Glebelands Secondary School                           | 542400                                                                                                                                                  |
| : Rainbows End Playgroup                                | 07821 010918                                                                                                                                            |
| : Sayers Croft Field Centre (Mr D Quoroll)              | 275541                                                                                                                                                  |
| : Cranleigh Health Centre (24 hour service)             | 782478                                                                                                                                                  |
| : SW Surrey Mobile Physiotherapy Service (Linda Haynes) | 01306 730074                                                                                                                                            |
| : Waverley Borough Council                              | 523333                                                                                                                                                  |
| : Waverley Borough Council (locality office)            | 267654                                                                                                                                                  |
| : Ewhurst Parish Council (Jane Bromley)                 | 267646                                                                                                                                                  |
| : Police Station (24 hours)                             | 08451 252222                                                                                                                                            |
| : Report Criminal Damage                                | 571212                                                                                                                                                  |
| : Cranleigh Library                                     | 272413                                                                                                                                                  |
| : Citizens Advice Bureau, Village Way, Cranleigh        | 273378                                                                                                                                                  |
| : Cranleigh Arts Centre                                 | 278001                                                                                                                                                  |
| : Cranleigh U3A (Mr Keith Atkins)                       | 267040                                                                                                                                                  |
| : The Old Rectory (Mr C Geoghegan)                      | 267195                                                                                                                                                  |
| : Ewcare                                                | 277606                                                                                                                                                  |
| : The Glebe Centre—book via WBC<br>Tracy Randle         | 523171                                                                                                                                                  |
| : Ewhurst Village Society (Mrs S Handley)               | 277458                                                                                                                                                  |
| : Ewhurst Village Club (Wendy Chapman)                  | 277300                                                                                                                                                  |
| : Ewhurst Village Hall Bookings (Wendy Bollon)          | 01403 252954                                                                                                                                            |
| : Ellen's Green Memorial Hall, Katy Rapley,             | 01403 823460                                                                                                                                            |
| : Waverley Borough Council                              | <a href="http://www.waverley.gov.uk">www.waverley.gov.uk</a>                                                                                            |
| : Ewhurst Parish Council                                | <a href="http://www.ewhurst.org.uk">www.ewhurst.org.uk</a>                                                                                              |
| : Cranleigh Health Centre                               | <a href="http://www.cranleigh.gpsurgery.net">www.cranleigh.gpsurgery.net</a>                                                                            |
| : Cranleigh Arts Centre                                 | <a href="http://www.cranleighbartscentre.org">www.cranleighbartscentre.org</a>                                                                          |
| : Ewhurst/Cranleigh Police                              | <a href="http://www.surrey.police.uk/neighbourhood/neighbourhood.asp?area=WVCE">www.surrey.police.uk/neighbourhood/<br/>neighbourhood.asp?area=WVCE</a> |

*Pimm's*



**FUNERAL SERVICES**  
**CO-OPERATIVE GROUP**  
**FUNERAL DIRECTORS**  
**&**  
**MEMORIAL CRAFTSMEN**

**DORSET HOUSE,  
HIGH STREET,  
CRANLEIGH 274079**

**PRIVATE CHAPELS OF REST**

**MARY ROAD, GUILDFORD  
567394**

**Immediate helpful attention night or day**

**nEWs and viEWs** *from the churches in Ewhurst*

---