

From the Parish of Ewhurst with Okewood & Forest Green

news&views

- WINTER 2019 -





CEDAR COURT CARE HOME

Essex Drive, Elmbridge Road, Cranleigh GU6 8TX

When choosing a care home for yourself or a relative, you will be looking for one that provides the very best care, whilst supporting individual lifestyles, tastes and preferences.

Welcome to Cedar Court - an attractive, spacious, purpose-built care home specialising in the provision of respite and longer term residential, nursing and dementia care.

Come and meet our team - we are passionate about care and passionate about people with a warmth and compassion that underpins everything we do.

Summer Breaks Available

 **carehome.co.uk** Cedar Court is proud to be rated 9.7 on carehome.co.uk

Surrey Care Award Finalists "Community Involvement in a Care Setting"



CEDAR COURT CARE HOME

Essex Drive, Elmbridge Road, Cranleigh GU6 8TX

Tel: 01483 667746 Email: cedar.court@mmcg.co.uk

www.mmcgcarehomes.co.uk

Highlights

Page	
5	Rector's Hello
7	Churchwardens' Report
11	In Our Midst: Richard Van't Riet
16	History Corner
19	Grumpy Feels Better
24	Catch The Carols
26	Amazing Grace
28	Cover story: An Alpaca Adventure
32	What's On?
35	Felix Cuthbert: Gardening Is My Salvation
38	Roof Report
43	Spotlight on WeCare
45	"Shoots" Scores

Page	
49	Rainbow's End
51	Fabulous Flowers
53	Miracles
55	Ewhurst Infants

Parish Office

01483 277 584
eofgparish@gmail.com

Ewhurst Baptist Church

01483 267 878
gill@ewhurstbaptistchurch.org.uk

Thanks to everyone who
contributed to this issue.

**Deadline for
contributions to the
Spring (March) issue
is midnight on Friday
31st January**

From the editor

Merry Christmas to everyone across the Parish. In this issue we have a mix of seasonal and of course local articles from a growing number of contributors. Thank you to everyone who helps make News & Views happen. I'm looking forward to the Christmas period across the Parish. Does it get any better than in such an idyllic rural setting? And on top of that, here's to the New Year, when I hope News & Views will involve more and more of the Parish. God bless one and all.

Will

will.shepherd@mac.com
07941 248 955

Would you like to help?

Thanks to those who have stepped forward to help with News & Views, not least with the advertising that was mentioned in the last issue. For the New Year it would be great to have more reporters. There's an editorial plan emerging for new types of articles but of course we're all ears to ideas you may have as well. So if you are an accomplished scribe with a passion for a popular topic, just email the editor. We'll consider all ideas carefully.



MJDH **PAINTING & DECORATING**



Marius Henderson

"A brush with the best!"



Please phone or write
to arrange a free estimate:

Mobile: 078 129 568 51

Home: 01483 274162

14 Dukes Close, Cranleigh, GU6 7JU

Email:

mariushenderson@hotmail.com

Hunters Lodge

Veterinary Practice

Philip M Stimpson
MA VetMB MRCVS

1 Mapledrakes Road
Ewhurst GU6 7RG



01483 276464

41 Woodridge Hill
Guildford GU2 9AD



01483 570782

Hugh Tanton

GARDEN DESIGN

**Garden Solutions from a
Qualified Professional**

Garden Design
Border Rejuvenation
Planting Plans
Solutions to Problem Areas
Planting and Landscaping
Friendly Advice and New Ideas

I pride myself on my professional and client-centred
approach and would love to hear from you.

E: enquiries@hughtantongardendesign.co.uk

T: 07502 277 911 and 01306 88 59 39

To find out more, please visit

HughTantonGardenDesign.co.uk

Mrs R A Wimbleton

State Registered Chiroprapist

Surgery (doorstep parking)
& Visiting Practice

Established 35 years
The Street, Ewhurst, GU67PX

New address:- 'Roseacre'
(entrance opposite The Allotments)

Tel:01483 277505

With love from Clare

CLARE, OUR RECTOR, GIVES HER CHRISTMAS MESSAGE AND TALKS ABOUT WHAT SHE'S LEARNED DURING HER RECENT ILLNESS

As winter blusters towards us I find myself drawn to all things cosy and safe. I want to wear my fluffiest jumpers and my warmest socks. I find myself craving open fires and warm baths. This year Will and I have bought an electric blanket - it's bliss.

This search for cosiness has been intensified for me this year. I have had a long period of illness which has been very difficult this early in my ministry in the Parish. Through my recuperation I have realised three things. I need a safe place to call my own. I need safe people around me. I need to be able to ask for what I need. These are all elements in the search for cosiness and comfort.

We all need these things. Around this time of year we are all drawn towards the



safe, the familiar. Christmas is a very cosy thing for many. Throughout the Parish we have many traditional Carol services and Christmas events. In the last couple of years things have had to be a little different as we have come together as a single Parish of three churches. I believe that this is a wonderful thing. However, change can feel a little threatening.

The story of Christmas is far from cosy. God who made the universe came to earth in human form. God chose to experience life as part of humanity, the highs and the lows. God did this so we could know God through the person of Jesus. It's not a cosy tale, but it is one that will bring us life in all its fullness. This is way better news than my electric blanket.

SURREY RESTORATION



Specialists in high quality restoration of antique furniture, objets d'art and period house restoration.

Estimates are free.

Commissions also undertaken

Please contact us at our workshop on 01932 868883 or our mobile 07711 635484

www.surreyrestoration.com

Surrey Hills Rehab

Stroke, Multiple Sclerosis, Parkinson's Disease?

We provide neurological physiotherapy services alongside other rehabilitation therapies and exercise professionals.

Contact us today to request a free telephone assessment.

07456 641356

kim@surreyhillsrehab.co.uk
www.surreyhillsrehab.co.uk

Tree Surgery - Hedge Cutting
- Garden Maintenance.

All types of fencing supplied & erected.
Logs for sale



G.B. FENCING & TREE SURGERY SPECIALISTS

Tel: 01403 824048

Mobile: 07714 689824

GUILD OF MASTER CRAFTSMEN

Free estimates - Fully insured

Checkatrade

Installation of all wood burning appliances
Installation of twin-walled flue liners
Service & Maintenance - Logs for sale



G.B. STOVE INSTALLATIONS

Tel: 01403 824048

Mobile: 07714 689824



Churchwardens' Report

Peter Bennett, Tony Brimelow, Bill Bruford, Clive Ward

As ever it's been a busy quarter in the Parish. We held the Parish fete on Heritage Open Day in September in the Ewhurst Rectory garden and churchyard and launched the new zipwire. The event was blessed with good weather and was attended by a record number of people from all over the Parish and beyond, and raised over £1,000. It was followed soon after by the Harvest Lunch in the Wilson Room which was also attended by Denis Ackroyd, our Rector prior to David Minns. The lunch raised over £600 towards roof restoration at Ewhurst.

By the time this is published, the work to repair St Peter & St Paul's chancel roof and stonework should be complete (report on page 38). It will have finished on time and on budget, even allowing for some additional stonework repair to be conducted next spring. Thanks to everyone who contributed, but we need to raise an additional £60,000 as there is now some uncertainty that we will receive the anticipated VAT refund.

Two major things have taken place at Holy Trinity in Forest Green. After more than 120 years the window frames have been refurbished and the glass has been thoroughly cleaned inside and out, all adding to the charm of this idyllic chapel. May we take this opportunity to thank all who kindly donated to the *Friends of*

Holy Trinity who funded these refurbishment works.

On a much more modern note, thanks to the great efforts of Fiona Sparkes and team, the new 'Messy Church' was launched in September with an outdoor barbeque and great kids' activity. Over 45 children and adults attended and had a great time. Generally, 'Messy Church' will occur at Holy Trinity every second Sunday at 5pm. Do look out for the notices and reminders in the weekly news sheet. It is an event for all the family, and you will always be warmly welcomed.

At St John The Baptist, Okewood, the congregation is eagerly anticipating 2020. Why? Because it is the 800th anniversary of the church. Read Barry Thompson's article on page 16 to get a flavour of its rich history. Plans are afoot for a year of festivity and celebration. Bishop Jo is booked in for a blessing.

Last, but not least, can the Churchwardens extend a heartfelt thank you to all the service leaders who are keeping the show on the road in Clare's absence. We are indebted to you. (Rev'd Rosemary Mason has even started doing a spot of bell ringing). Clare is recovering well, and we will keep you updated on the plans for her return.

Station Garage

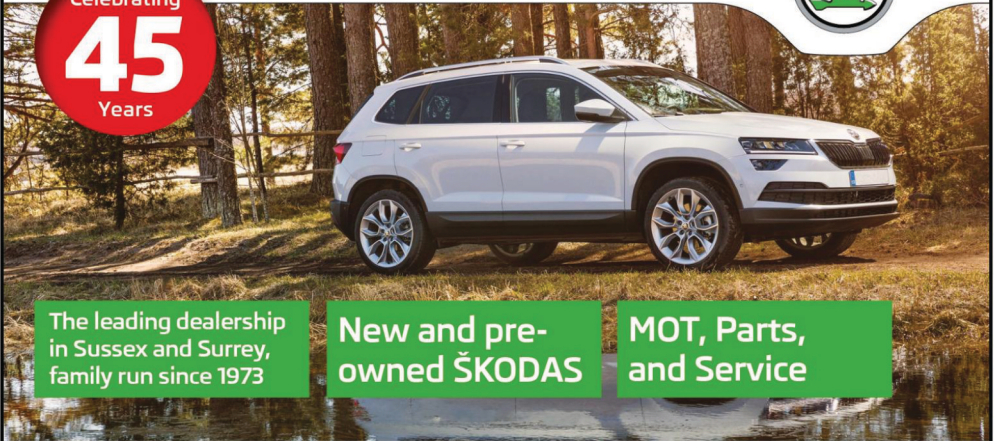
ŠKODA



Celebrating

45

Years



The leading dealership
in Sussex and Surrey,
family run since 1973

New and pre-
owned ŠKODAS

MOT, Parts,
and Service

Station Garage 78 Billingshurst Road, Broadbridge Heath, Horsham, West Sussex RH12 3LP

01403 282080 www.station-garages.co.uk

Just 15 mins from Ewhurst



Surrey
Hills
PC

Your local & affordable service
for home and business

Laptop, Desktop, Mobile and Tablet
PC & Apple

- ❖ Performance improvement
- ❖ Virus removal
- ❖ Network & Broadband
- ❖ Hardware & LCD repairs
- ❖ Affordable websites
- ❖ Purchase advice

No VAT
No fix = no Fee

Established 2008

01306 400121

david@surreyhillspc.co.uk

DM HANDYMAN SERVICES

FOR ALL YOUR
MAINTENANCE NEEDS

Landscaping • Fencing
Kitchens • Carpentry • Plumbing
Painting and Decorating

General household
maintenance indoors
and out

01403 823687

07795 097102



Membership no. A111556

Christmastime, mistletoe and...

HAZELBANK STORES IN EWHURST HAS A GREAT WINE SELECTION. HERE ARE SIX FINE REDS FROM RENOWNED IMPORTERS, TAURUS WINES

CHATEAU BEAUCHENE - FRANCE



There's a lovely fresh, light, raspberry fruited nose, with a classic ground white pepper and raspberry fruit flavour that comes from Grenache-based wine, with some savoury, smoky character creeping in.

£13.99

BRAAI CAB SAUV - S. AFRICA



12 months in oak gives it a smoky, spicy earthiness that compliments the rich berry fruit. It's a complex, balanced wine and a great crowd-pleaser for the winter months with a rich venison or beef casserole. **£11.99**

ARALDICA BAROLO FLORI - ITALY



Aromas of tobacco, leather and violets. Soft, light tannins give this a silky mouthfeel and more ripe fruit flavours on the palate. Perfect with all things game - from venison to pheasant.

£19.99

THE SCOUNDREL - AUSTRALIA



A fruit-forward blend of Shiraz (65%) and Grenache (35%) aged in new and older French and American oak. This creates a spicy, medium-bodied wine with heaps of berry fruit and just a hint of vanilla oakiness. **£12.99**

LES VOILETS MALBEC - FRANCE



A vibrant wine in the glass. Complex without being clumsy, extremely fine red- fruit flavours fill the mouth,. Raspberries come to the fore and are backed up with a touch

of buttery chocolate truffle richness. **£9.99**

LOS OLIVOS - ARGENTINA



This Malbec is a wine of elegant plum, blackberry and white pepper notes, with a long fruity finish. An ideal accompaniment to grilled and roasted meats, roasted vegetables or pasta.

£10.99



**Traditional craftsmanship at surprisingly affordable prices
without ever leaving your home.**

Our beautiful hand-made curtains, blinds and cushions are all made to order so you can achieve the perfect style, fit, fabric and finish with simplicity and confidence.

Contact us on **01483 277474**, christina@tailor-madeforhome.co.uk
or via our website www.tailor-madeforhome.co.uk to arrange
a free, no obligation home visit.

TAILOR-MADE
-curtains & blinds-

A Fabulous Somebody

GEORGINA RUSHWORTH CONTINUES IN OUR MIDST WITH AN INTERVIEW WITH RICHARD VAN'T RIET FROM EWHURST

Richard, TV Director, BAFTA award-winner and musician enjoyed a conventional childhood.

Born 1966 in a suburb of Melbourne

Australia, it was when starting his senior education as a boarder at Geelong Grammar School 'Australia's Eton' that life became a little extraordinary.

The school advocated an outdoor

education, and aged 14 Richard spent a year in the bush at the Timbertop campus, where 12 years earlier Prince Charles had studied (later describing it as 'hell' but admitting he 'loved it all').

The students hiked and skied and were responsible for tasks like chopping firewood and keeping the boiler lit. As a rite of passage at the end of the year, they completed a 5-day hike, returning to scrub clean their accommodation, before finally running a marathon.

Richard was playing drums and had an interest in the theatre when in 1984 he secured his first job in the mailroom at the ABC (Australia's BBC), a year later getting



Richard doing what he loves. Photo courtesy of Angus Tosh

his first break when asked if he'd like to be involved 'in something called Live Aid'.

During the course of the fundraising weekend, Richard (he says by virtue of the fact he was there) was

promoted from

Assistant Floor Manager to Floor Manager and ended up in front of camera being interviewed by the show's celebrity host.

He established The Fabulous Nobody's Theatre Co (a name he would return to) in 1990 and for 10 years produced and directed musicals and plays.

In 2000, Richard now an established director, was offered the opportunity to work freelance on *The Weakest Link*, and left ABC with a golden handshake. Having recently reunited with Catherine,

Continues p59



Bullimore's

Chartered Accountants

- Financial & Tax Planning • Accounting • Audit
- Taxation • Business Start-ups • Payroll
- Inheritance Tax & Executorship
- Probate & Estate Management

For advice, call our Dorking office on: 01306 880880
or email: partners@bullimores.co.uk
www.bullimores.co.uk

Bullimores LLP is registered to carry on audit work in the UK and Ireland; regulated for a range of investment business activities; and licensed to carry out the reserved legal activity of non-contentious probate in England and Wales by the Institute of Chartered Accountants in England and Wales



WOODFORD

Family Funeral Service

FAMILY RUN FUNERAL DIRECTORS & MONUMENTAL MASONS
QUALIFIED, EXPERIENCED STAFF AVAILABLE 24 HOURS A DAY EVERY DAY

01483 276500

Dobbe House, Ewhurst Road, Cranleigh, GU6 7AA

www.familyfuneralservices.co.uk

Our Family Serving Your Family



Thanks for your support!

JANE HARRY REPORTS FROM THE PARISH FUNDRAISING TEAM

Thanks to the hard work of Michelle Matthews, her family and the many helpers from the whole Parish, the Parish Fete was an excellent day for all. The sun shone and the BBQ, teddy bear picnics and Wilson Room teas gave everyone the energy to enjoy all the many stalls and activities, including zipping down the new zipwire, visits to the Bell Tower or just enjoying themselves.

The Fete also gave us the chance to welcome the wider Parish community, as well adding much needed funds towards the maintenance of our Parish churches.



The Parish Fete was the best-attended ever and raised over £1000 for buildings restoration.

Parish Christmas Cards are already on sale at all three churches, with all the profit going to support the churches, so please buy some packs if you have not already done so. After Christmas, look out for the Parish Easter cards, which will be available in March.

Plans are already underway for next year's fundraising events which we hope will continue

bringing the Parish and its community closer together. Thank you in advance for your support, none of these things can happen without it.

FUNDRAISING EVENTS FOR 2020

*Easter Market at the Parrot Forest Green**

Golf Day

Local Talent Musical Eve

Walk of Parish Churches

Italian Evening at Ewhurst Village Hall

Tuesday 31 March

May

May

Saturday 5 September


Saturday 28 November

Start saving for the Easter Market 2020. Put aside any good-as-new items that can be sold on the "Going for a Song" stall (sorry, no clothes accepted)




**MINA MILANOVIC
PHOTOGRAPHY**

- FAMILY & PET PORTRAITS
- WEDDING PHOTOGRAPHY
- HEADSHOTS & COMMERCIAL
- GIFT VOUCHERS



www.minamilanovic-photography.com
info@minamilanovic-photography.com
 07793 677 867

ROBIN HORTON
 GARDEN ART AND DESIGN

Landscaping - Ponds - Planting
 General Gardening - Free Advice



01306 627 351

robingardenartanddesign@hotmail.co.uk



**KEEP INTERESTED
 KEEP SOCIALISING!**

KIKS Club, Ewhurst Baptist Church
2-4pm, 1st & 3rd Mondays o/t month

Our social club, KIKS offers the opportunity for friendship, chat, crafts and various board games alongside tea and cake!

Don't stay home wishing you had a bit of company, but put your coat on and come and join us.

Lifts can be arranged.

**For more information, contact
 Cherry Matthews on 01483 277895**



Ewhurst Baptist Church, GU6 7QA | 01483 267878 | Minister: Gill Wickenden gill@ewhurstbaptistchurch.org.uk

Discover Kindred Spirits

BELINDA KERRY INTRODUCES KINDRED SPIRITS,
A MINISTRY IN THE PARISH FOR CHRISTIAN WOMEN

A group of women from the churches in the previous Parish of Ockley, Okewood Hill and Forest Green got together about six years ago to form a Women's Ministry team. Our idea was to bring outreach, fellowship and ministry from our churches into the community by setting up a weekly café in the Ockley Cricket Pavilion and organising women's breakfast meetings with speakers four or five times a year.

The Pavilion Café is open every Wednesday morning from 9 to 12 (except for a break at Christmas) serving teas, coffee, a selection of home-made cakes and savouries, with bacon butties on the last Wednesday of the month. It is very well attended by regulars and newcomers, a social meeting place for friends,

a gathering point for families and ideal location for getting Parish business done. With donations from customers and a minimum of overheads, we have been pleased to support many charities both local and national.



Belinda Kerry and Iris Spruce at The Pavilion Café

Women's Breakfasts are also held in Ockley Cricket Pavilion on the third Saturday in January, May, July and October from 8.45am. We provide a friendly and safe atmosphere for all. There's a variety of speakers from Christian charities, local

churches, those with personal testimonies and those with inspirational messages. Breakfasts are always delicious with a variety of both hot and cold options. In Spring we team up with the Men's Ministry. With over 100 guests we meet at the larger venue of Oakwood Village

More on Kindred Spirits? Contact belinda.kerry@gmail.com | 01306 627 386
Parish Breakfast dates are on page 60. Pop them in your diary!

A gem in a perfect setting

BARRY THOMSON GIVES US THE FIRST INSTALMENT IN THIS THREE-PART STORY ON THE HISTORY OF ST JOHN THE BAPTIST, OKEWOOD.



The church of St John The Baptist, Okewood is nestled in idyllic woodland just past Gatton Manor and off Standon Lane as you head east towards Ockley, (RH5 5QT)

Okewood Church, justifiably described as “a gem in a perfect setting” by Rev Oscar Stanway, vicar of the church between 1938 and 1945, in his booklet *The Story of Okewood Church*.

The church was built in the early years of the thirteenth century. In those times, it

was described as a “Chapel of Ease” for those Parishioners who could not reach Wotton Church – one can only imagine how difficult it would have been to travel the old highways and byways in the winter months on the Wealden clay which we have in this area.

The original founder of the chapel is not

known but the earliest record is dated 1290 and states that Sir Walter de Fancourt presented a priest to the chapel.

One of the earliest legends tells the story of Edward de la Hale who endowed the chapel with lands to the value of £200 in 1431, over £200,000 in today's terms, whose son was saved miraculously in the face of a wild boar whilst hunting in the surrounding woodland and whose brass is set under the chancel floor under a glass cover.

Electricity only came to the church in 1963 and some of the most elderly residents still remember the use of large bellows to pump air into the organ before it was electrified in 1964.

During the middle ages the very existence of Okewood Chapel was in doubt and action by local yeomen demonstrated how important this church is to the people of our villages.

Shortly after King Edward VI came to the throne in 1547 an Act of Parliament was passed which dissolved the Colleges, Chantries, Free Chapels and the like, the object being to put an end to what were considered to be "superstitious practices". Mistakenly, Okewood Chapel was thought to be a Chantry Chapel, that is to say a chapel for the saying of Masses for the repose of someone's soul, and without any further enquiry the

whole property was seized by the Crown.

The property was sold in the following year to Sir Henry Polstede of Chilworth, which included the chapel and chapel house (which one assumes must be "Pollingfold" or Chapel Cottage) in which there lived "some honest priest to serve the said cure" - a gentleman by the wonderful name of Sir Hamlett Slynge.

In return for the loss of his church, house and lands the unfortunate Slynge was granted a pension of 5 marks per year (3 pounds, 6 shillings and 8 pence) for his lifetime.

For some years thereafter the chapel remained unused – there are grounds for believing that the destruction of the building was contemplated but fortunately it was spared.

**WHY NOT BECOME A
FRIEND OF OKEWOOD CHURCH?**

If you would like to support the work of this charity which exists solely to preserve, maintain and beautify Okewood Church, and you are willing to enter into a regular covenant to give £20 per month, please contact the Parish Office (mornings on Monday, Wednesday and Friday) on 01483 277 584.

FREE
ADMISSION

The Glebe Centre Fundraising Committee
welcomes you to an evening of festive merriment

CHRISTMAS IS A-COMING

7pm Saturday 14th December
at The Glebe Centre

A VERITABLE FEAST OF CHRISTMAS DELIGHTS
MUSIC • SONGS • SKITS
WITH PLENTY OF AUDIENCE PARTICIPATION
FESTIVE REFRESHMENT | RAFFLE

with musicians and artists from near and far

RETIRING COLLECTION FOR PTSD
Post-traumatic stress disorder

**BE SURE TO CHECK OUT THE MANY WONDERFUL
CHRISTMAS CHURCH SERVICES ON PAGES 23 & 41**

VISITORS WELCOME

Ewhurst Bridge Club

Every Friday, 7.20pm
The Glebe Centre
Ewhurst, GU6 7PY

Derek Gardner
01483 272890
alider@tiscali.co.uk

www.ewhurstbridge.org.uk

OKEWOOD

ST JOHN THE BAPTIST CHURCH'S EIGHT HUNDRETH YEAR

In 2020 the congregation of St John The Baptist, Okewood will be celebrating the 800th anniversary of the founding of our little 'Church in the Woods'. We are marking the occasion in a variety of ways next year, and we would be very pleased if all folk who live in the Parish (and those outside) would come and visit us at some point. Watch out for more news about what's happening next year!



The Parish of Ewhurst
with Okewood & Forest Green

Grumpy feels better

AFTER A LONG HARD LOOK AT HIM- OR HER-SELF, OUR GRUMPO HAS SEEN THE LIGHT AND HAD A CHANGE OF HEART ABOUT MOANING.

Do I feel better after voicing my “grumps” in the last edition? There were a number of people who guessed my identity and agreed with me. Likewise, there were one or two who did not like what I wrote.

So I decided to be a bit more positive this time. What’s been happening in our local scene over the past few months? Well, actually quite a bit even though the summer festivities had finished by the time of the last edition.

In early September schoolchildren returned for another year. It has been interesting for me to see the change in Ewhurst School after the end of last term. The average age of the children is almost one year younger than in July. The children in their first term at “proper” school seem so young – and the children in the other two classes have grown both in size and confidence. The children often know more than you realise. I have also learnt that from my youngest grandchild – aged 4. Children also imitate their parents and

grandparents. Yesterday I was told in a stern voice to take my shoes off as soon as I entered the house - and this was in my own home.

I managed to take some time off in September. But I was back in time for the September Parish Fete in the churchyard which was blessed with glorious sunshine. I met with a number of people who are not regular church attenders. For me that’s one of the joys of an event like that – the church is there for everyone. The fete was quickly followed by our Harvest Festival celebrations when we give thanks for all that we have – and present our gifts to those in Ukraine who are in need.

There – I have managed to be positive. No grumps. I have not even mentioned the “B-word” and I’m now sitting in a peacefully quiet house having had an exhausting week with our youngest grandchild who has been staying with us. Time for some liquid refreshment.

Exhausted of Ewhurst

Specific apologies to cyclists who avoid using Cranleigh Road cycle lane as lack of maintenance means it’s “like driving a Ferarri over a ploughed field”!

LOXWOOD LANDSCAPES

Paul Gregson BSc Hons

Hard and soft
landscaping
Garden design

Any project considered

For friendly advice and a free
and prompt quotation
contact Paul on

01403 753 204
07949 312 402

paul@loxwoodlandscapes.co.uk

Robert Hay FRICS Planning & Design www.roberthayplanning.com

Chartered Surveyor offering wide experience in
all aspects of Planning, Design & Construction

- Extensions & Conversions
- New House Designs
- Planning Applications
- Building Regulations
- Planning Appeals
- Project Management

For a free initial consultation telephone

01483-277707

HAZELBANK COUNTRY STORES

The Street, EWHURST

Tel 01483 277442

Groceries - Greengrocery
Beers, Wines & Spirits
Tobacco - Confectionery
Newsagent

LOCAL DELIVERIES

COMPREHENSIVE FOOT CARE

HEALTH PROFESSIONS
COUNCIL REGISTERED

**CHIROPODIST/
PODIATRIST**

**SUE ELLIOTT D.Pod.M.,
M.Ch.S, HPC REGISTERED**

SURGERIES AT

EWHURST
01483 277257
AND

CRANLEIGH
01483 276178

**PLEASE TELEPHONE FOR
APPOINTMENT**



Walk!



THERE ARE QUITE A FEW WALKING GROUPS IN THE PARISH AND SURROUNDING AREAS - CHECK A FEW OF THEM OUT HERE

Ewhurst Walkers

First Tuesday of the month, 10am
Ewhurst Village Car Park

An informal group led by Jan Jesson, features max 2-hour local walks.
Contact Jan: **01483 276 655**

Mole Valley Ramblers

Many weekday & weekend walks

Offering friendly group walking across the heart of Surrey and further afield. Both on weekdays and at weekends MVR provide a range of walks, 5-7 miles for half day walks and 10-12 for full day walks. Shorter, more leisurely walks of 3-5 miles are available for those who would prefer to begin with something gentler. View the calendar: **molevalleyramblers.org.uk**

Walking for Health

The Walk for Health scheme is a programme of fun, free and accessible volunteer-led walks, bringing people together to socialise and motivate one another. The walks last 30 - 90 minutes.

Cranleigh - meet at the Leisure Centre every Tuesday at 11.00am. Info at: **smartcranleigh.org/event/walking-for-health**

Mole Valley - check out the walking calendar here: **molevalley.gov.uk/walkforhealth**

Cranleigh U3A

2nd Mondays, Long Walk (5-6 miles)

gwyneth.brearley@gmail.com

1st Wednesdays, Long Walk

bobcallard@btinternet.com

3rd Mondays, Short Walk (3 miles)

davidlawrenceoakwood@gmail.com

1st Wednesdays, Short Walk

geoff.edwards22@gmail.com

Cranleigh & District Walking Club

A friendly group, enjoying the countryside around Cranleigh for over 35 years. Join us on Saturday mornings. Walks up to 5 miles with lunch at a local pub. Contact Jackie on **01483 268694** or email **avery265@btinternet.com**

Save the date for the next Parish Walk.
March 21st, the first Saturday in Spring 2020



THE BULL'S HEAD

The Street, Ewhurst, GU6 7QD | Phone 01483 277447
www.bullsheadewhurst.co.uk | Follow us on Facebook

Monday-Friday Lunchtimes in December

2 course Festive Lunch
£16.50/Seniors £15.50

Party Menu

2 Courses £18.50
3 Courses £22.50

Monday 2nd December
Quiz Night

Thursday 19th December
Dinner & Carols

Christmas Eve
Open for Lunch & Dinner

Christmas Day
3 Course Lunch £65.00

Boxing Day
Open for Lunch from 12-3pm

New Year's Eve
3 Course Dinner +
Mike Hopwood's Live Band
£35.00
(Booking required)

Proprietors John & Elizabeth O'Brien

Camping out for Children in Need

BELLA MATTHEWS AND FRIENDS CAMP OUT AT EWHURST CHURCH
TO RAISE FUNDS AND AWARENESS OF HOMELESSNESS

Bella reports, "The night of November 15th was cold but thankfully the rain had stopped. Dad and I slept out in the church doorway in our sleeping bags. Our friends, Sarah, Alex and Rose Smith, slept in the church. So far we have raised over £300. Thank you all for your support and for those who stopped and donated in the early hours of the morning. My page is still open to donate."



Bella beds down for the night in the doorway of St Peter & St Paul Church, Ewhurst

Support Bella now at www.justgiving.com/fundraising/ellasleepout



Christmas Services in Ewhurst

St Peter & St Paul

CHRISTINGLE

4pm Sunday 8th December

All the wonder of candles in oranges with sweets and fruit. In aid of The Children's Society.

9 LESSONS AND CAROLS

6.30pm Sunday 22 Dec

The story of Jesus coming to earth told through hymns and readings.

CAROLS ROUND THE CRIB

4pm Tuesday 24 Dec

A crib service for families with children. All the carols accompany the story of baby Jesus.

MIDNIGHT COMMUNION

11.15pm Tuesday 24 Dec

More commonly known as Midnight Mass, this is the first opportunity to celebrate Emmanuel, "God with us", on Christmas Day.

CHRISTMAS FAMILY SERVICE

10.30am Wednesday 25 December

Don your best Christmas jumper, bring in a gift from your Christmas stocking. Come and enjoy the family fun at an informal yet worshipful Christmas service.

The Baptist Church

The year has fast flown by, it seems, again with many differing experiences from sad to happy. The one thing that stands out to us is that we have a faithful God who does not let us down whatever our circumstances. Let's worship him this Christmas.

ADVENT SERVICES IN DECEMBER

Every Sunday, 10.30am

Love, joy, peace and hope ring through the weeks of Advent. You are very welcome at our Sunday Advent services.

CAROL SINGING IN THE STREETS

7pm, Thursday 12 December

Meet at the Ewhurst Baptist Church. First stop Bulls Head Green. Second stop at The Glebe (No. 51). Back to church for finale.

CAROLS BY CANDLELIGHT

6.30pm Sunday 15 December

Join us for tea at 5.15pm, then sing!

CHRISTMAS DAY

10.30am, Wednesday 25 December

Celebrate Jesus' birth with us. Followed by a Village Christmas Lunch from 11.45am.

Okewood & Forest Green services are listed on p41



Catch the carols



WHETHER TO JOIN IN, OR SIT BACK AND LISTEN,
RIGHT HERE IS WHERE YOU CAN FIND WHERE CAROLS ARE BEING
SUNG NEARBY IN THE LEAD-UP TO CHRISTMAS

CAROLS IN PUBS

Bull's Head, Ewhurst 8pm Thu 19 Dec

The Parrot, Forest Green 6.30pm
Thu 19 Dec (Leith Hill Timeline Choir)

The Parrot 6.30pm, Mon 23 Dec

CAROLS IN THE STREETS

Ewhurst Baptist Church 7pm Thu 12
December, meet at the church

Carols on the Green 6.30pm Fri 20
Dec, Forest Green

The Walliswood Wassail 7pm Sat 21
Dec, opposite the Scarlett Arms

CAROLS IN CHURCHES

Carols by Candlelight 6.30pm Sun 11
Dec, Ewhurst Baptist Church

9 Lessons & Carols 5pm Sun 15 Dec,
Holy Trinity, Forest Green & 6.30pm
Sun 22 Dec, St Peter & St Paul, Ewhurst

Crib Services Tue 24 Dec
4pm St Peter & St Paul, Ewhurst
5pm St John The Baptist, Okewood

CAROLS CONCERTS

Surrey Hills Singers

Family Christmas Concert 2pm Sun
8 Dec, Cranleigh Village Hall, featuring
performers from age 5-65 from all four
choirs. £12 Adults and £3 for u16s

Candlelit Concert 8pm Sun 8 Dec, St
Nicolas Church, Bury Street, Guildford
Tickets: www.surreyhills-choirs.co.uk,
07513 523933

Cranleigh Choral Society

**Schubert Mass in G & Bach Cantata
"Wachet Auf"** 7.30pm Sat 14 Dec,
C'leigh Vlg Hall, 01483 274455
secretary@cranleighchoralsociety.org.uk

Oxford Singers

Carols for Clandon 7.30pm Tue 17
Dec, Holy Trinity, Guildford, book at
nationaltrust.org.uk/events

Rock Choir & Cathedral Singers

Carols for Age UK 11am Thu 19th
December, Guildford Cathedral, **Free**,
Enquiries 01483 503414.

Ashtead Choral Society

Classic Carols 10am Sun 8 Dec
Ashtead Peace Memorial Hall, £2
07379 427666
boxoffice@ashteadchoralsociety.org.uk

Guildford Choral

Festive Family Carols Sat 21 Dec
G-Live Guildford, £17 to £27
ticketing@glive.co.uk, 01483 369350



are proud to present a Regional Premiere

Cameron Mackintosh's revised 2009 West End production of

LIONEL BART'S

Oliver!

Directed and choreographed by Meg Bray
Musical Director, Simon Fraser

Book, Music and Lyrics by

LIONEL BART

The Village Hall, Ewhurst

Friday 31st January 2020 at 7.30pm

Saturday 1st February at 2pm & 7.30pm, Sunday 2nd February at 2pm

Thursday 6th & Friday 7th February at 7.30pm

Saturday 8th February at 2pm & 7.30pm

BOX OFFICE: www.ticketsource.co.uk/ewhurstplayers

Phone: 01483 272378

Bar open 30 minutes before the show commences

This amateur production is presented by arrangement with Music Theatre International (Europe)

Amazing Grace

GRACE THOMAS TELLS US ABOUT HER PASSION FOR FASHION AND HER LATEST VENTURE INTO DESIGNING CHILDREN'S CLOTHES

From a very young age I've always been interested in designing and making: from textiles and clothing to up-cycling furniture and creating bespoke one-off pieces. Being a daughter of a family building company I've grown up around designing and planning which given me great organisational skills.

Having lived in Ewhurst all my life and having only attended local schools, I then made the decision at sixteen to study at Chichester College. I was fortunate to be given a place on their renowned Fashion course and was one of twelve students selected to work closely with industry professionals.

When I get time around my five jobs, I volunteer at Hurtwood School's wardrobe department, which I am thoroughly enjoying. Consequently, I am looking to specialise in Theatre Design in the future which includes Costume, Set and Prop, to develop my skill base further.

Three years ago I decided to set up my own business, specialising in bespoke children's clothing. I design and create a collection each season for children 3 months to 8 years. This summer my studio was extended which has enabled me to take my passion to the next level and I have built up a client base stretching as far as Germany.

I will also be holding a variety of stalls at Christmas Markets across Surrey. Find the event listings on my Facebook page or email me to find out more.

**DISCOVER MORE AND
GET IN TOUCH WITH GRACE**

07849 136 615

grace.t.clothing@gmail.com

<https://www.etsy.com/uk/shop/GTChildrensClothing>

<https://m.facebook.com/GT.ChildrensClothing>

Grace in her new studio where she has founded GT Children's Clothing, creating collections every season for children from 3 months to 8 years olds. Bespoke commissions are also welcome. Just give Grace a call.



An alpaca adventure

NEWS & VIEWS TALKS TO TONY AND HILARY MONK FROM WALLISWOOD ABOUT THEIR INCREDIBLE JOURNEY INTO BREEDING ALPACAS

So when did this all start?

HM: Our alpaca story began when we got married and moved to Okewood ten years ago from Kingston. Our house is quite unusual as it sits in the middle of the land we have. And we soon learned that you can't leave fields untouched. They need management. Otherwise nature will move in.

TM: Yes, we took advice and very quickly learned that if we wanted to keep our amazing wild flower meadows, we would have to somehow get the fields grazed, which would not only keep the grass down but get the seedbed trampled in.

HM: So we started exploring options like having sheep, but local farmers advised against this for a variety of reasons.

TM: But then I got talking to one of my patients* and he had a herd of alpacas up in Oxfordshire. Hilary wasn't too keen at first but I persuaded her to take a look.



Hilary with a few of the herd.

HM: Yes, it was an interesting trip but it made us realise we had to give this some serious thought. It was another two years before we went for it.

TM: I guess I stayed enthusiastic for that couple of years because - and it's both our goals really - we wanted to "make sense of the land"; to find a passion that

connected us to the beautiful countryside where we had decided to settle.

How did you get from "just grazing" to breeding?

TM: After much soul searching and research, we made contact with ➔

**Tony is a Harley Street consultant physiotherapist and acupuncturist, and specialist in integrated functional medicine.*



Tony & Hilary's Huacaya alpaca herd has grown thanks to an expert breeding programme that they have mastered over the years. Today, Pinnacle Alpacas is the home of many champions whose genetics and fleeces are highly sought after.



A delighted Mr and Mrs Deppe walk Pinnacle Crackerjack (left) and Pinnacle Gladstone (right) back to their field after a wedding service at Okewood church where the alpacas brought in the couple's rings.

one of the UK's top Alpaca stud farms and arranged a visit.

HM: As a result of that, we attended the the 2013 Alpaca Classic, a programme of seminars and international speakers, finishing with an alpaca auction.

TM: We learned a huge amount and sat through the auction under strict instructions not to buy anything. But we had a chance to put into practice all that we had already learned about discerning good alpaca stock.

HM: So we got the bug big time. We were now thinking we're not getting any younger, and were certain we wanted to do something totally different.

When did your first herd arrive?

TM: We eventually took delivery of our eight precious - and very pregnant -

The phenomenal fleece

Alpacas have been bred over 7,000 years for their fleece. It is used for wool or is spun as yarn for weaving. It is incredibly fine and likened to cashmere. In Peru it's known as the fiber of the gods. Alpaca fibre is natural, hollow and breathable, so it's warm in winter, cool in summer. Amazingly, it is naturally fire retardant. And there's no lanolin, so no scouring or stripping is required in its processing, hence very environmentally friendly.

Alpacas on 22 December 2013, the day before a huge storm wiped out power for three days. We had to install gates on our open Sussex Barn to get the herd in the dry. But once in, they loved it, rolling in the freshly prepared barley straw. We spent the next few days and weeks getting to know them until, eventually, they came running to our call and would happily eat out of our hands.

HM: The girls we'd chosen have impeccable pedigrees and were mated to outstanding, proven stud males. This galvanised an alpaca breeding programme at the highest level. The girls' excellent confirmation (body shape) and consistently fine, dense and uniform fleece, together with exemplary genetics, provided the perfect platform for success.

Did you come across any adversity early on?

TM: The very first birthing season! We had a premature cria (newborn alpaca) born very early on St George's Day. He was hypothermic and lacking the strength to suckle.

HM: So we picked him up and took him up to the barn. His mother was unsure whether to follow at first. But it was incredible because her fellow females gathered round her, encouraged her, and walked with her up to the barn.

TM: He weighed just 4.5 kilos. Normal weight would be 7-8 kilos. He couldn't stand for 48 hours. Without suckling he couldn't get the vital immunity from his mother's milk. So we had to step in and get him a plasma transfer.

HM: But he pulled through and he is today a champion male with an award-winning fleece. His official name is Pinnacle Incan Prince but because of his birthday we know him as George .

How are things going now, a few years on?

HM: Our herd is now 56-strong with stud males, breeding females and a selection of younger animals. We're developing products from our fleece stocks including pillows, duvets, woven and knitted items. Enquiries are also mounting about our unique Alpaca Wedding Packages. Plus, very soon, we're launching Alpaca Experiences where visitors can meet and mingle with our herd.

TM: And we're much more tuned in to the rhythms of the yearly calendar which features shows, shearing, mating and birthing. It's incredibly full on, but we love it and are very excited about the future.

If you'd like to meet Tony and Hilary's Pinnacle Alpacas and learn about these amazing animals, book an experience by calling them on 07957 689 002 or make enquires via [facebook.com/pg/pinnaclealpacas](https://www.facebook.com/pg/pinnaclealpacas) or [pinnaclealpacas.co.uk](https://www.pinnaclealpacas.co.uk)

WHAT'S ON

Who knew so much was happening in our Parish?
Here's a fulsome but by no means exhaustive listing
of what's on in the Winter Quarter. Enjoy!

DECEMBER

Sun 1	Advent Carol Service 6.30pm St Peter & St Paul, Ewhurst
Mon 2	Pilates 7pm Ewhurst Village Hall Art & Crafts Society <i>Landscape demo</i> 7.30pm Walliswood Village Hall.
Tue 3	Baby & Toddler Group 9.45 - 11.15am Forest Green VH
Wed 4	Café Mornings 10.30 - 12 noon Glebe Centre & Ockley Cricket Club Baby & Toddler Group 10 - 11.45am Ewhurst Baptist Church
Thu 5	WeCare Christmas Party 10am The Glebe Centre, Ewhurst Yoga 7.30pm EYSC (Ewhurst)
Fri 6	Pilates 9.30am Forest Green VH Baby & Toddler Group 10 am Wilson Room, Ewhurst Church Bridge Club The Glebe Centre 7pm start Contact: 01483 272 890
Sat 7	Festive Quiz 8pm Ewhurst Club
Sun 8	Christingle 4pm St Peter & St Paul, Ewhurst
Mon 9	Pilates 7pm Ewhurst Village Hall
Tue 10	Baby & Toddler Group 9.45 - 11.15am Forest Green VH Young At Heart 2.30pm Oakwood VH History Society Talk 8pm Ewhurst Baptist Church Contact: 01483 277 342
Wed 11	Café Mornings 10.30 - 12 noon Glebe Centre & Ockley Cricket Club Baby & Toddler Group 10 - 11.45am Ewhurst Baptist Church
Thu 12	Yoga 7.30pm EYSC (Ewhurst) Quiz Night 7.30pm Scarlett Arms, Walliswood Carols in Ewhurst 7pm B'ptist Church
Fri 13	Pilates 9.30am Forest Green VH Baby & Toddler Group 10 am Wilson Room, Ewhurst Church Bridge Club The Glebe Centre 7pm start Contact: 01483 272 890
Sat 14	Christmas Is A-Coming 7.00pm The Glebe Centre Ewhurst
Sun 15	Christmas Bingo 7.30pm Ewhurst Club Carols By Candlelight 6.30pm Baptist Church, Ewhurst

Sun 15	9 Lessons & Carols 5pm Holy Trinity, Forest Green
Mon 16	Pilates 7pm Ewhurst Village Hall
Tue 17	Baby & Toddler Group 9.45 - 11.15am Forest Green VH
Wed 18	Café Mornings 10.30 - 12 noon Glebe Centre & Ockley Cricket Club Baby & Toddler Group 10 - 11.45am Ewhurst Baptist Church
Thu 19	WI 2.30pm Forest Green Village Hall Yoga 7.30pm EYSC (Ewhurst) WeCare Dementia Group 10am-noon, Glebe Centre, Ewhurst Carols at Bull's Head 8pm Ewhurst Carols at The Parrot 6.30pm F'st Green
Fri 20	Pilates 9.30am Forest Green VH Baby & Toddler Group 10 am Wilson Room, Ewhurst Church Carols on the Green 6.30pm Forest Green Bridge Club The Glebe Centre 7pm start Contact: 01483 272 890 Bingo Night Oakwood Village Hall 7pm for 7.30pm £10 a head Contact Jill: 01306 628 329 End of School Term
Sat 21	Walliswood Wassail 7pm nr Scarlett Arms Christmas Cocktails 8pm Ewhurst Club
Sun 22	9 Lessons & Carols 6.30pm Ewhurst Goodies Draw 7.30pm Ewhurst Club
Mon 23	Carols at The Parrot 6.30pm F'st Green
Tue 24	Carols Around The Crib 4pm St Peter & St Paul, Ewhurst Crib Service 5pm St John The Baptist, Okewood Midnight Communion 11.15pm St Peter & St Paul, Ewhurst
Wed 25	Communion 8am Forest Green Family Service 10.30am St Peter & St Paul, Ewhurst All-Age Service 10.30am St John The Baptist, Oakwood Family Service 10.30am Ewhurst Baptist Church
Sun 29	Joint Parish Service 10.30am St John The Baptist, Okewood
Tue 31	NYE Party 8.30pm Ewhurst Club

JANUARY

Wed 1	A Happy New Year to one and all
Thu 2	Yoga 7.30pm EYSC (Ewhurst) WeCare Dementia Group 10am-noon, Glebe Centre, Ewhurst
Fri 3	Bridge Club The Glebe Centre 7pm start Contact: 01483 272 890
Sat 4	Café Mornings 10.30 - 12 noon Glebe Centre & Ockley Cricket Club
Sun 5	Yoga 7.30pm EYSC (Ewhurst) Scarlett Arms Quiz 7.30 for 8pm
Mon 6	Pilates 7pm Ewhurst Village Hall Parish Quiz Night 7 for 7.30pm Bulls Head, Ewhurst
Tue 7	Beginning of School Term Baby & Toddler Group 9.45 - 11.15am Forest Green VH
Wed 8	Café Mornings 10.30 - 12 noon Glebe Centre & Ockley Cricket Club Baby & Toddler Group 10 - 11.45 Ewhurst Baptist Church
Thu 9	Yoga 7.30pm EYSC (Ewhurst) Quiz Night 7.30pm Scarlett Arms, Walliswood
Fri 10	Pilates 9.30am Forest Green VH Baby & Toddler Group 10 am Wilson Room, Ewhurst Church Bridge Club The Glebe Centre 7pm start Contact: 01483 272 890
Mon 13	Pilates 7pm Ewhurst Village Hall
Tue 14	Baby & Toddler Group 9.45 - 11.15am Forest Green VH Young At Heart 2.30pm Oakwood VH
Wed 15	Café Mornings 10.30 - 12 noon Glebe Centre & Ockley Cricket Club Baby & Toddler Group 10 - 11.45 Ewhurst Baptist Church
Thu 16	Yoga 7.30pm EYSC (Ewhurst) WeCare Dementia Group 10am-noon, Glebe Centre, Ewhurst 07775 8651325
Fri 17	Pilates 9.30am Forest Green VH Baby & Toddler Group 10 am Wilson Room, Ewhurst Church Bridge Club The Glebe Centre 7pm start Contact: 01483 272 890
Sat 18	Pilates 7pm Ewhurst Village Hall Ladies' Parish Breakfast 8.45am Ockley Cricket Pavilion

Sun 19	Baby & Toddler Group 9.45 - 11.15am Forest Green Village Hall
Mon 20	Pilates 7pm Ewhurst Village Hall
Tue 21	Baby & Toddler Group 9.45 - 11.15am Forest Green VH
Wed 22	Café Mornings 10.30 - 12 noon Glebe Centre & Ockley Cricket Club Baby & Toddler Group 10 - 11.45am Ewhurst Baptist Church
Thu 23	WI 2.30pm Forest Green Village Hall Yoga 7.30pm EYSC (Ewhurst)
Fri 24	Pilates 9.30am Forest Green VH Baby & Toddler Group 10 am Wilson Room, Ewhurst Church Bridge Club The Glebe Centre 7pm start Contact: 01483 272 890 Bingo Night Oakwood Village Hall 7pm for 7.30pm £10 a head Contact Jill: 01306 628 329
Sat 25	Live Music 8.30pm Ewhurst Club
Sun 26	Baby & Toddler Group 9.45 - 11.15am Forest Green Village Hall
Mon 27	Pilates 7pm Ewhurst Village Hall
Tue 28	Baby & Toddler Group 9.45 - 11.15am Forest Green VH
Wed 29	Café Mornings 10.30 - 12 noon Glebe Centre & Ockley Cricket Club Baby & Toddler Group 10 - 11.45 Ewhurst Baptist Church
Thu 30	Yoga 7.30pm EYSC (Ewhurst)
Fri 31	Pilates 9.30am Forest Green VH Baby & Toddler Group 10 am Wilson Room, Ewhurst Church Bridge Club The Glebe Centre 7pm start Contact: 01483 272 890

FEBRUARY

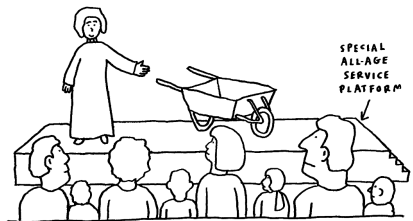
Mon 3	Pilates 7pm Ewhurst Village Hall Art & Crafts Society <i>Landscape demo</i> 7.30pm Walliswood Village Hall.
Tue 4	Baby & Toddler Group 9.45 - 11.15am Forest Green VH <i>Rhododendrons</i> , Ewhurst Hort. Soc. 8pm The Glebe Centre
Wed 5	Café Mornings 10.30 - 12 noon Glebe Centre & Ockley Cricket Club Baby & Toddler Group 10 - 11.45am Ewhurst Baptist Church

Thu 6	Yoga 7.30pm EYSC (Ewhurst) WeCare Dementia Group 10am-noon, Glebe Centre, Ewhurst 07775 8651325
Fri 7	Pilates 9.30am Forest Green VH Baby & Toddler Group 10 am Wilson Room, Ewhurst Church Bridge Club The Glebe Centre 7pm start Contact: 01483 272 890
Sat 8	Pilates 9.30am Forest Green VH Bridge Club The Glebe Centre 7pm start Contact: 01483 272 890
Mon 10	Pilates 7pm Ewhurst Village Hall
Tue 11	Baby & Toddler Group 9.45 - 11.15am Forest Green VH Young At Heart 2.30pm Oakwood VH
Wed 12	Café Mornings 10.30 - 12 noon Glebe Centre & Ockley Cricket Club Baby & Toddler Group 10 - 11.45am Ewhurst Baptist Church
Thu 13	Yoga 7.30pm EYSC (Ewhurst) Quiz Night 7.30pm Scarlett Arms, Walliswood
Fri 14	Pilates 9.30am Forest Green VH Baby & Toddler Group 10 am Wilson Room, Ewhurst Church Bridge Club The Glebe Centre 7pm start Contact: 01483 272 890
Sat 15	Men's Parish Breakfast 8.30am Oakwood Village Hall Live Music 8.30pm Ewhurst Club
Sun 16	Yoga 7.30pm EYSC (Ewhurst)
Mon 17	Pilates 7pm Ewhurst Village Hall
Tue 18	Baby & Toddler Group 9.45 - 11.15am Forest Green VH History Society Talk 8pm Ewhurst Baptist Church Janet: 01483 277 342
Wed 19	Café Mornings 10.30 - 12 noon Glebe Centre & Ockley Cricket Club Baby & Toddler Group 10 - 11.45am Ewhurst Baptist Church
Thu 20	WI 2.30pm Forest Green Village Hall Yoga 7.30pm EYSC (Ewhurst) WeCare Dementia Group 10am-noon, Glebe Centre, Ewhurst 07775 8651325
Fri 21	Pilates 9.30am Forest Green VH Baby & Toddler Group 10 am Wilson Room, Ewhurst Church

Fri 21 cont.	Bridge Club The Glebe Centre 7pm start Contact: 01483 272 890 Bingo Night Oakwood Village Hall 7pm for 7.30pm £10 a head Jill: 01306 628 329
Mon 24	Pilates 7pm Ewhurst Village Hall
Tue 25	Baby & Toddler Group 9.45 - 11.15am Forest Green VH
Wed 26	Café Mornings 10.30 - 12 noon Glebe Centre & Ockley Cricket Club Baby & Toddler Group 10 - 11.45am Ewhurst Baptist Church
Thu 27	Yoga 7.30pm EYSC (Ewhurst)
Fri 28	Pilates 9.30am Forest Green VH Baby & Toddler Group 10 am Wilson Room, Ewhurst Church Bridge Club The Glebe Centre 7pm start Contact: 01483 272 890

Every effort is made to ensure times and dates are correct at the time of going to print. Organisers may change details from time to time.

*A creative Jesus-centred service
for the whole church family*



A VISUAL AID OF SOME SORT

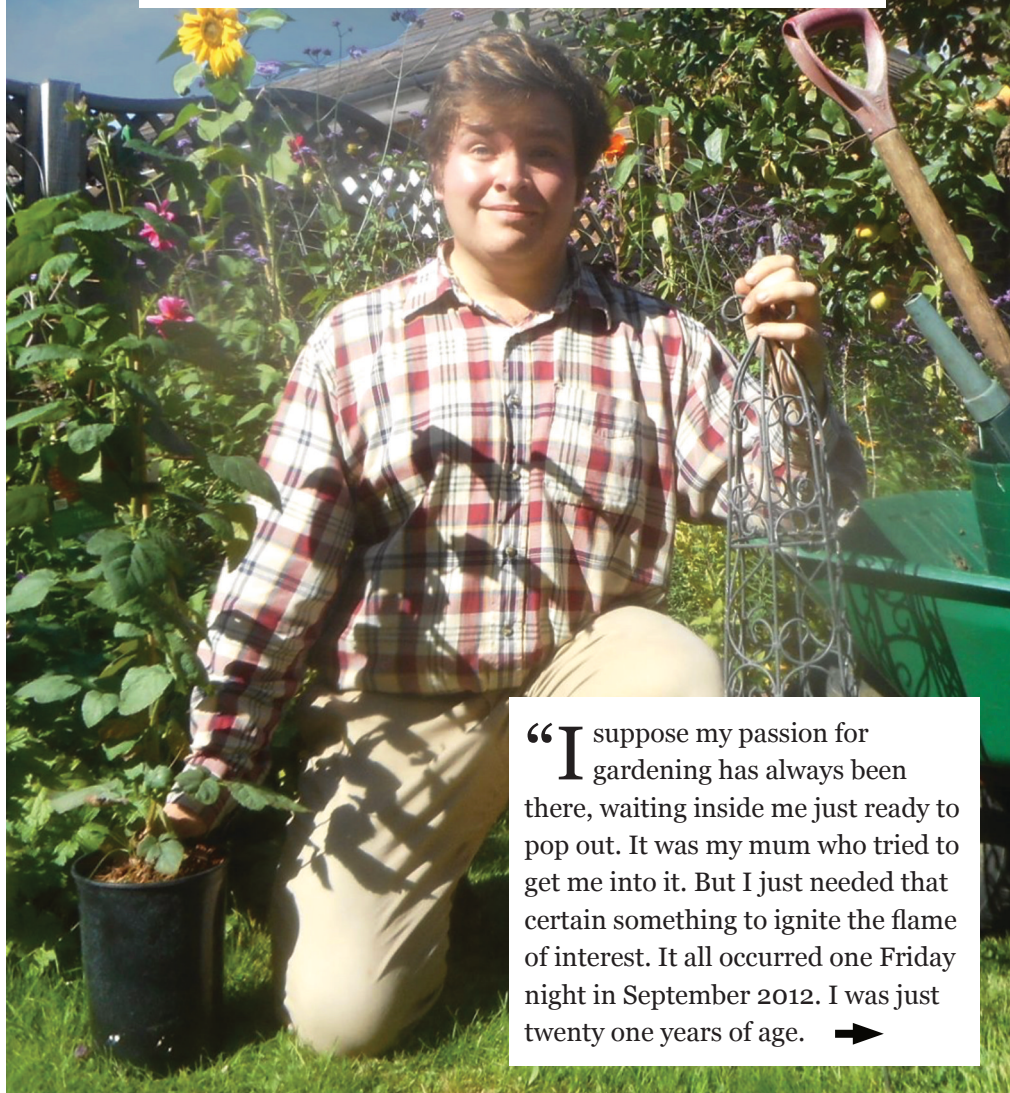
All-Age Church

Every first Sunday of the month
10.30am at St John The Baptist,
Okewood

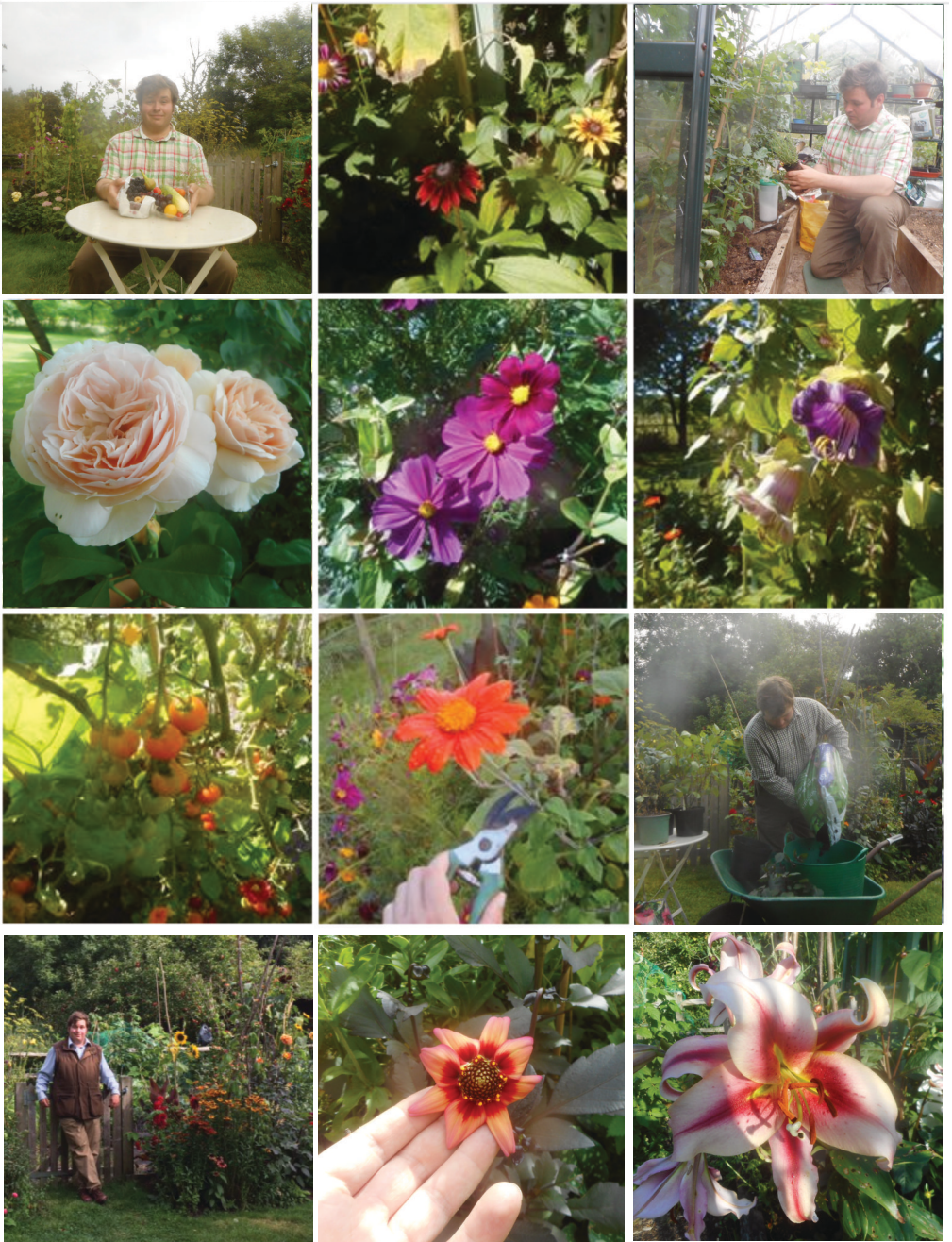
Do check the Parish calendar on our website eofgparish.org.uk and, if in doubt, ring the Parish Office 9.30 - 12.30, Wed to Fri on 01483 277 584

Gardening is my salvation.

FELIX CUTHBERT REVEALS HIS PASSION FOR HORTICULTURE AND INTRODUCES HIS IRRESISTIBLE FACEBOOK PAGE



“I suppose my passion for gardening has always been there, waiting inside me just ready to pop out. It was my mum who tried to get me into it. But I just needed that certain something to ignite the flame of interest. It all occurred one Friday night in September 2012. I was just twenty one years of age. ➔



Above, a few photos from the hundreds that Felix has posted to Facebook of the gardening he's done throughout the year: Felix's favourites are: Flower, Dalias; Fruit, Grapes;Vegetable, Cucumbers; Herb, Mint. Those he would like to master in the future are: David Austin Roses, Pineapple and Parsnips,

I'd just watched Mastermind and then Gardener's World came on. I gave it the benefit of the doubt and five minutes turned into a quarter of an hour until I found myself watching the whole episode. What drew me in was the beauty of what I saw. And it was Monty Donn's passion, his charisma, that kept me glued to the screen.

It was only by 2015 that I had really got the hang of it. But it may interest readers to know that between the initial spark and getting into the swing of things, gardening offered me a chance for salvation.

On 13th February 2014 I was approached by my mother and father over tea and biscuits. It was then that they told me that I was diagnosed with Aspergers. After that conversation I went up to my room and didn't come out for the rest of the day. It was possibly the darkest day of my entire life.

But that's where gardening came in. It opened up a door of opportunity and helped me find an area where I was capable. It's through gardening that I've walked out of the darkness and into the light of day.

The beginning of my journey into horticulture was the planting of lavender

in a stone urn. Lavender is only supposed to last a few years or so before it goes hard and woody. But this one is seven years old. With the right love and care I want to get it to a decade, take cuttings, and start over again.

Since that first plant, I've been adding more and more. The garden has grown a lot and now I feel confident with dozens of varieties of flowers, fruit, vegetables and herbs.

As well as doing my own garden, I help out at The Grange in Bookham where people in my situation can come and do volunteer work. It actually was there that I got enthused to master parsnips.

I am most grateful that I came across Monty and Gardener's World. Today I watch it religiously, not only to improve my own skills, but with the hope that I can offer some advice to those around me. I might not be able to answer every question, but I like to help the best I can.

As for a winter tip for readers, it is perfectly safe for you to plant your tulip bulbs up in pots or containers, but I would resist placing them in the ground until after the first frost as this prevents the risk of a virus called "Tulip fire" or Botrytis!

Search "Felix's Gardening Page" in Facebook. Click 'like' to follow Felix throughout the year. You won't be disappointed.

Children are, indeed, the future

JANE HARRY GIVES US AN UPDATE ON THE CHURCH ROOF AT EWHURST, FEATURING A TIME CAPSULE AND A SLAB SIGNED BY EWHURST INFANTS



Cherry Class with their slab held by head teacher Jane Dyer, plus school staff and roofers Stuart and Steve

By the time you read this the scaffolding outside the church will have been removed and you can see the repairs to the stonework and the new roof. Two of the roof slabs on the north side are very special. The bottom slab nearest the gable window has the signatures of all the children in Cherry class from Ewhurst C of E Infant School and the top one has the signatures of all the people who have worked on the project. We just hope that no-one sees

them for another hundred years.

The inside of the chancel roof is being plastered ready for Christmas and we plan to have the internal scaffolding down and the church fully back to normal by the second week in December. It may mean our Christmas tree does not go up as early as usual but it will be there for most of the celebrations.

Continued p61

If you have a heart for our wonderful church buildings in the Parish and wish to support them, call the Parish Office 01483 277 584 (9.30 to 12.30, Wed - Fri)

Small charity. Big heart.

The Ewhurst Charity is a fund providing grants for education and 'relief in need' to the residents of the Parish of Ewhurst.

Our grants have included:

- Financial help for those wanting to further their education
- Assisting students with overseas charity work
- Equipment for school, youth and church groups
- Youth football & tennis coaching
- Financial help to reduce hardship and distress

Please get in touch:

All applications are given serious consideration.

Contact Angie Thomas

01483 271 194 | 07809 516 484

thomasmascalls@btinternet.com



**THE
EWHURST
CHARITY**

2020 Calendar

EWHURST HORTICULTURAL SOCIETY

After a wonderfully successful 2019, we look forward to welcoming current and new members plus all visitors to our inspiring talks in 2020

Rhododendrons from the Himalayas to Chelsea

The Glebe Centre, Tuesday 4th February 8pm | Speaker: David Millais, Chairman of the RHS Rhododendron, Camellia and Magnolia Group | Members Free / Visitors £2

Painting with Plants - Sydney Scott Memorial Talk

The Glebe Centre, Date TBC | Speaker: Chris Beardshaw | Tickets available now: 01483 277591 tickets@ewhurstshortsoc.org.uk | Members £10 / Visitors £12

Join us. Family membership £5
membership@ewhurstshortsoc.org.uk

General Enquiries:
enquiries@ewhurstshortsoc.org.uk



JENNIFER MARGRAVE SOLICITORS LLP

- Wills, Trusts & Probate
- Lasting Powers of Attorneys
- Court of Protection matters
 - NHS funding issues
 - Non-mortgage related residential conveyancing

Tel: 01483 562722

The Old Post Office, 130 Epsom Road,
Guildford, GU1 2PX



**Wills &
Inheritance
Quality**

E: enquiries@jennifermargrave.co.uk

We advise on law but do much, much more!

www.jennifermargrave.co.uk

Authorised and regulated by the Solicitors Regulation Authority
SRA No. 533213

Pamper Me Organic

A Unique Facial Experience
combining Facial Rejuvenation
Massage and exquisite Certified
Organic Skincare to visibly refine,
tone and lift the eye area, face
and neck.

Your personalised 75 minute
experience is just £35.

Fiona Sweeney 07968 752099

www.pampermeorganic.co.uk

Based in Ewhurst

BLUE TICKING
Brilliant Spaces for Kids



Fabulously fun and unique goods.
Vintage, new and totally brilliant.

www.blueticking.co.uk

John Shaw Building Services

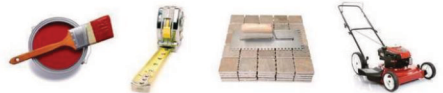
Based in Ewhurst

**A reliable, friendly and trustworthy local
service offering well priced, good quality
internal and external renovation.**



Services include:

Painting and decorating • Tiling and flooring
Furniture design and build • General carpentry
Bathroom and kitchen installations
Garden maintenance • Patios and decking



Contact John - 07816 266941

john@johnshawservices.co.uk

www.johnshawservices.co.uk



Christmas Services at Okewood & Forest Green

9 LESSONS & CAROLS

Sunday 15th December | 5pm

Holy Trinity, Forest Green, RH5 5SG

CRIB SERVICE

Tuesday 24th December | 5pm

St John the Baptist, Okewood, RH5 5QT

CHRISTMAS DAY

Holy Communion | 8.30am

Holy Trinity, Forest Green, RH5 5SG

All-Age Service | 10.30am

St John the Baptist, Okewood, RH5 5QT

Ewhurst services on p23 | For more information visit www.eofgparish.org.uk



PJM FOR ALL YOUR PROPERTY NEEDS

A little of what we do:

New builds and extensions ▲ Refurbishments and conversions ▲ Property maintenance
Loft conversions ▲ Electrics ▲ Plumbing ▲ Bathroom and Kitchen installation
Wood / multi-fuel burning stoves, chimneys and flue installation
Paving, patios and decking ▲ Oak framed garages ▲ Solar photo voltaic systems ▲ And much more

Please follow the contact details below for your competitive free no obligation quote

PJM 6 Northlands Cottages, Northlands Road, Warnham, West Sussex, RH12 3SQ

Mobile: Peter 07976 816311

Landline: 01306 627306

Email: office@pjm.org.uk Website: www.pjm.org.uk





St Peter & St Paul
EWHURST

Baby & Toddler Group

EVERY FRIDAY* 10-11.30AM

* Term time only

The Wilson Room, Churchyard,
St Peter & St Paul, Ewhurst

Contact Rosie Smy 01483 351386
eofgparish@gmail.com

PARISH CHOIR CAROLLING



DECEMBER GIGS

7pm, Saturday 14

The Glebe Centre

8pm, Thursday 19

The Bull's Head Inn, Ewhurst

6.30pm, Monday 23

The Parrot, Forest Green

All proceeds to **PTSD**
Post-traumatic stress disorder



BABY AND TODDLER GROUP

at Ewhurst Baptist Church
Wednesdays from 10:15 to 11:45

We provide an environment in which you and your children can make friends, chat, play and have a good morning out!

Everyone is welcome – mums, dads, grandparents and carers. Refreshments are available for adults. A fruit snack is provided mid morning for the children.

A variety of activities are available at each session.



For more information please contact one of the team
on 01483 267878, or Marian Copus on 01483 267014

Ewhurst Baptist Church, GU6 7QA | 01483 267878 | Minister: Gill Wickenden gill@ewhurstbaptistchurch.org.uk

WeCare. The clue is in the name

VICTORIA HELSTRIP INTRODUCES WECARE, A SUPPORT AND SOCIAL GROUP FOR PEOPLE LIVING WITH DEMENTIA,

Our Ewhurst group for people living with dementia is nearly two years old. We look back on the past year with pleasure and some confidence. It has been a learning curve for all of us: volunteers, carers and those with a mixture of memories and difficulties.

At our meetings in the Glebe Centre on the first and third Thursday of each month we enjoy a wide variety of activities. The morning starts with a combination of games and projects to be completed:

drawing, constructing (and sometimes demolishing!) and, most importantly, the chance to share experiences and chat.

There is time for tea and coffee and a variety of delicious cakes before gentle physical activities, which are always popular. We also have a quiet time for poetry and short readings before we all have the opportunity to enjoy music and a singalong. Something for everyone. Over the year WeCare has enjoyed a

number of special events. We celebrated our first anniversary with a party in the Glebe Centre. We also held two lovely garden parties, one in the Spring and one in the Summer, both held in the garden of the Franklin-Adams family.

The sun shone on both occasions, a wonderful tea was served and we were entertained by members of the Melody Memories, a Cranleigh singing group.

Towards the end of the summer we spent

a happy morning travelling along the river Wey on a narrow boat. We were accompanied by the Melody Memories group and we all joined in a selection of river Shanties accompanied by the Hillbillies, a group of young guitarists. The weather was perfect and a very enjoyable occasion finished with lunch at the Onslow Arms, Loxwood.



At the end of the summer, the WeCare group enjoyed an outing on the river Wey

The WeCare Christmas Party, with refreshments and entertainment, is at the Glebe Centre on December 5th from 10.00 to 1.00pm. All welcome.

A few shots of the creativity and fun at "Shoots" youth group held at Ewhurst Baptist Church on Fridays in term time from 6.30pm



Roll that dough.



Pizza time! Oh, yeah.



Jar Aquarium... nice!



Knockin' the air out

“Shoots” scores

ANDY WICKENDEN REPORTS ON THE GREAT AND GROWING
“SHOOTS” FRIDAY YOUTH GROUP AT EWHURST BAPTIST CHURCH

There’s a real ‘Friday Feeling’ going on at Ewhurst Baptist Church from 6.30 to 7.45pm.

After a long week at school, it’s time to chill out, relax with friends and have some creative fun together. So far this term we have had four very different fun packed evenings:

CRAZY SCIENCE – everybody got stuck into real live science experiments and watched whacky Professor Rosemary electrifying a pickled gherkin and extinguishing a chip pan fire (all under controlled conditions of course)

CREATIVE MEGAMIX – great fun was had making mini aquariums, felt animal pin cushions, crazy foam painting, chocolate chip cookie baking and coloured salt decorative jars

PIZZA-MAKING – Pizza Express eat your heart out, everyone made their own pizza from scratch and takeaway boxes were duly decorated and filled.

YOUTH APPRENTICE – it was time for the teams to create a pop song,

produce it, market it and sell it to the punters to impress Lord Jonathan Sugar.

After all the high energy follows a supposedly quieter time of reflection based upon a DVD series from the film *Monsters Inc.* There has been a chance to think about things such as friendship, loneliness, bullying and helping each other.

We have spent time reflecting on what the bible says on such matters and how that can influence and impact on our everyday lives.

Shoots meets Fridays in term time
Our Christmas party is on
December 6th. This will be
a fantastic finale to a
really fun-packed term.
Invite your friends all
you Year 5, 6s and 7s for
plenty of
sausages

on
sticks,
hula hoops
and party
poppers!!



Come to the Shoots Christmas Party 6.30pm Friday 6th November and make a note that regular meetings begin from Friday January 10th 2020.



Oil Boilers / Oil Tanks
Air Conditioning
Underfloor Heating / Radiator Systems
Power Flushing & System Balancing
Hot Water Cylinders & Thermal Stores
Cold Water Storage and Pressure Boosting
Linked Heating Systems
Smart Thermostats
Heating Controls Wiring
Home Automation

Keith 07939 866547 / Danni 07870 989156
Landline 01293 863750 (Newdigate)
info@greenlifegurus.co.uk



Registered Partner



R. Good. Mowers

Garden Machinery
Service and Repairs
07973 620 532

Robert Gooding
Slinfold
w-oody@live.co.uk



CAGNE
COMMUNITIES
AGAINST
GATWICK
NOISE
EMISSIONS

Working on behalf of the communities of Sussex and Surrey to reduce aircraft noise, and oppose airport expansion to protect homes, wellbeing and the planet!

Join **CAGNE** via our website www.cagne.org
cagnetatwick@gmail.com



Est Feb 2014
Instagram CAGNE

EDE BROS

REMOVALS · STORAGE · SHIPPING ·

01306 711293
edebros.co.uk

- Established 1926, Capel-based and family owned
- For **STRESS-FREE** local, national and worldwide moves
- Contact us for your **FREE** estimate...






CHRISTMAS TRAIL

10am - 3pm, Sat 14 & Sun 15 Dec 2019
Sayers Croft, Ewhurst, Surrey

A festive family activity trail leading to Father Christmas! Enjoy a maze, campfire, cave, archery, Christmas craft and more! Please allow 1 hour to complete the trail.

TICKETS
£4 advance / £7 on day
Adults and under 2s go FREE
Booking: www.sayerscrofttrust.org.uk
Or email: trust@sayers-croft.org.uk



Family favourites

THE HARDING FAMILY FROM WALLISWOOD SHARE
THE WORSHIP SONGS THAT INSPIRE

How Great Thou Art Rupert/Dad

“The words are so poignant and the music compliments the words so well.”

In Christ Alone Clare/Mum

“This is so wonderful to sing as it has a beautiful melody but, even better, the words speak God’s truths straight into my heart.”

The Splendour of The King Lily - 14

“The words are so full of worship and joy about loving God and knowing he is with you always.”

Abide With Me Anna - 13

“It has a sweet, soft tune which is so pretty and true words.”

Till We Meet Again Josie - 11

“It is sort of telling you that God is always with you until you actually are with him.”



Carters Car Care

For that personal service, call:

01306 711 614

garage@cartercarcare.co.uk

www.carterscarcare.co.uk



Servicing & Repair | Bosch, Delphi & Autologic Diagnostics
Air Conditioning Services | Brake Discs skim on vehicle
Laser Four Wheel Alignment | MOT Test Centre Class 4, 5L & 7

Vicarage Lane, Capel, RH5 5LL

PARENTS. Don't forget to check out the wonderful family services, like our fabulous Christingle in Ewhurst 4pm Sunday 8th December and our Crib Services on Tuesday 24th at Ewhurst (4pm) and Okewood. (5pm) See pages 23 and 41

LANDSCAPE DESIGN & BUILD

If you are considering any work to your outdoor space, please feel free to give me a call for a complimentary consultation.

With over 30 years of local and international experience, I would love to help you realise the potential of your garden from concept to completion.

Any scale project considered

Andy Curwell

B.Sc Hons (Botany), RHS (Horticulture), Dip (Terrain Evaluation)

0787 526 6372

www.secondnaturelandscapes.co.uk

info@secondnaturelandscapes.co.uk



Second Nature
Landscapes

Rainbow's reports

GILL NEAL TELLS US ABOUT THE INSPIRING TEACHING AND ACTIVITIES AT RAINBOW'S END PRE-SCHOOL THIS AUTUMN

We have had a busy term at Rainbow's, we have been helping new children to settle into the routine, getting to know them and show them around, we have now welcomed 12 new ones including 10 new families.

We made bread to help the children to understand where some of their food comes from, having listened to the story of the Little Red Hen.

We looked at the seed, the corn, the flour and finally the dough. The children enjoyed getting their hands into the dough mixture, mixing it, squashing it, bashing it and shaping it, which in turn develops their fingers to hold a pen later during their school-lives. They were fascinated to see it go into the oven as dough and come out as bread, and had something to take home and share with their families.

The children enjoyed a visit from ZooLab, where the children were told the

story of Meg who was having problems making a feast for a party, her spells kept on going wrong and all sorts of animals were coming out of her bag.

The children got to touch and hold a snail called Shelly, a corn snake, a rat and a millipede.

The children make weekly trips to The Old Rectory Care Home, joining in with the residents as they have a "songs and

smiles" session or doing a craft activity. The children always come back singing a different song and the relationships they are building with the residents are important for everyone.

We are looking forward to our Christmas half-term with lots of festive activities. It will be finished off by our Tip-Toe Nativity production, we will have all 31 children on the stage singing and dressed as a variety of characters from the familiar Christmas story - just don't let the donkey wake baby Jesus!



The children loved getting messy with dough as they learned about where their food comes from.

**If you would like to find out more about the pre-school, see our website:
www.rainbowsendpre-school.org.uk**

Dog Walking, Daycare
& Boarding



07941 248 955
will.shepherd@mac.com
sheppy.co

Home visit?
Dog walking?
Shopping?
Surgery Visit?
EwCare
Tel. 01483
277606
Ewhurst & Ellens Green Village Care
Prescription?
Simple household repairs?

NEIGHBOURLY HELP
is available for anyone
in need - any age - try

EwCare
01483 **277606**

line open Weekdays 10.00 am until 12.00 noon

Professional Toenail Cutting

Qualified practitioner
Home visits available

Call Shan on
01983 406 403



An hour of chat
while you knit

The Old Rectory, GU6 7PX
First Friday of the month
3 - 4pm

Afternoon tea

All welcome

THE GEOGHEGAN GROUP

Fabulous flowers!

JESS HOGAN-SMITH GIVES US AN INSIGHT INTO THE FLOWER TEAM AND THEIR SKILLS AT ST PETER & ST PAUL, EWHURST

Once again this year the Flower Guild has hosted a wreath-making workshop to raise money for other important flower festivals throughout the year. (This year it has been held on 30 Nov).

Wreaths have been around for thousands of years with some crediting the Romans as the innovators and others citing the early Christians. They are said to symbolise the never-ending cycle of life. The use of evergreen foliage in the winter months is a sign of hope and good faith that the spring, summer and harvest will return next year. Today wreaths have become synonymous with Christmas and interestingly they've changed very little over the years.

Flowers are an important part of life at St Peter & St Paul and we benefit from a dedicated team who give their time

freely (and often their garden foliage too) for the benefit of the weekly congregation, school services and visitors who pop into the church throughout the week.



Jess coaches the children in making a Christmas candle/foilage centrepiece

Each year a small group of us dress the church for Nine Lessons and Carols and the Christmas celebrations using foliage, flowers and candles. This follows a pause during Advent when the church is kept bare except for an Advent wreath made of greenery.

It's a lovely time to be part of the Flower Guild. We are always looking for people to join us, so if you are interested please feel free to drop me a line, details below. Also if you'd like to sponsor the flowers for a certain week, perhaps for an important date, then we'd be happy to arrange that.

**Merry Christmas from all of us at the St Peter & St Paul Flower Guild.
Interested in joining us? Contact Jess at jhogansmith@live.co.uk**

MEET YOUR PEST CONTROL EXPERTS

Covers London & South England - from Cranleigh



PETER HIGGS
Live Honeybee
Removal &
Pest Expert



OLIVER ALLEN
Woodworm,
Damp &
Pest Expert



SPECIAL OFFER

FREE survey for any
of the below

- call & quote code PGHEW1

- Fast response guaranteed
- Experts in all species
- Stops pests returning

- Dirty loft insulation clearance
- Bird proofing
- Rodent proofing
- Wasp nests

Proud members of
Checkatrade.com
Where reputation matters



01483 273 478

www.pghpestcontrol.co.uk
sales@pghpestcontrol.co.uk

10 Smithbrook Kilns Business Park, Cranleigh, GU8 8JJ



PGH®

Pest Control & Prevention

Passionate about reducing pesticide use



Peaslake Fitness Studio
& Dancing School

BALLET / MODERN JAZZ
FREESTYLE / THEATRECRAFT

ADULTS' FUNKY
DANCE CLASSES



STEP / 50+ / BODY CONDITIONING
POWER WALKING / PERSONAL TRAINING

BIRTHDAY
DANCE PARTIES
ages 7 upwards

PERSONAL
DANCE LESSONS

for further information call Avril
01306 731182 / 07899 842727

e: dancearamix@btinternet.com

RAPLEY'S GROUND AND GARDEN MAINTENANCE

LAWN AND FLOWER BORDER CARE
TREE INSPECTIONS/PRUNING
FISH POND SERVICE
DRIVEWAYS/GARDEN PATHS
SWIMMING POOL MAINTENANCE
TREE SURGERY



JON RAPLEY
01483 277336
07791 106595

JRAPLEY1@GMAIL.COM

Miracles

AS WE'RE IN THE SEASON OF THE GREATEST MIRACLE IN HISTORY,
HERE'S C.S. LEWIS WITH A FEW THOUGHT-PROVOKING WORDS

I have known only one person in my life who claimed to have seen a ghost. The interesting thing is that she disbelieved in the immortality of the soul before seeing the ghost and still disbelieves after having seen it. She thinks it was a hallucination. In other words, seeing is not believing. This is the first thing to get clear in talking about miracles. Whatever experiences we may have, we shall not regard them as miraculous if we already hold a philosophy which excludes the supernatural. Any event which is claimed as a miracle is, in the last resort, an experience received from the senses; and the senses are not infallible. We can always say we have been the victims of an illusion; if we disbelieve in the supernatural this is what we always shall say. Hence, whether miracles have really ceased



C.S. Lewis - chronicler of Narnia
and titan of Christian apologetics.

or not, they would certainly appear to cease in Western Europe as materialism became the popular creed. For let us make no mistake. If the end of the world appeared in all the literal trappings of the Apocalypse, if the modern materialist saw with his own eyes the heavens rolled up and the great white throne appearing, if he had the sensation of being hurled into the Lake of Fire he would continue forever, in that lake itself, to regard his experience as an illusion and to find the explanation of it in psycho-analysis, or cerebral pathology. Experience by itself proves nothing. If a man doubts whether he is dreaming or waking, no experiment can solve his doubt, since every experiment may itself be part of the dream. Experience proves this, or that, or nothing, according to the preconceptions we bring to it.

The full text on Miracles can be found in the first chapter of *God In The Dock*,
or online at www.angelfire.com/ga4/readings/Lewis.html



M.E.S

**Mechanical Engineering
Services**

Bookings 01483 351964

**Servicing,
Repairs & MOT
for all makes
of vehicle**

**Full Engine
Diagnostics**

**Maintain your
Vehicle Warranty
when you use us
for all your
Automotive
Needs**



**Free
Collection
and Delivery**

**Courtesy Cars
Available**

Visit our website

www.carscanleigh.co.uk

BEN NICHOLSON

**TREE SURGERY
FELLING & FENCING**

SAWN TIMBER

**eg fencing, logs, oak beams,
weather boarding etc**

Tel: (01483) 548754

Mob: 0771 9026998

Fully Insured



Learning that's fun, active and outdoors!

JANE DYER, HEAD TEACHER OF EWHURST CE INFANT SCHOOL, REPORTS

We have had a busy start to the Autumn term at Ewhurst CE Infant School. Our new pupils in Reception class have settled in very happily, and are enjoying getting to know the school and its routines, with the older children acting as excellent role models. Year 1 has already had a highly enjoyable and exciting trip to Painshill Park and Year 2 will again be attending the Advent Workshop at Guildford Cathedral at the end of November. Offsite trips are valuable learning experiences.

Forest School provides wonderful opportunities for young children to develop and extend skills for learning.



Reception children use our delightful wooded area each week led by our trained Forest School leader Mrs. Macey. Sayer's Croft provide activities for Year 1 and 2 which have included making wattle and

daub walls, making sculptures using different textures, colours and shapes.

Book Week this year was very inspiring as children focused on favourite authors.

Parents were invited into school to work alongside their child which is such a highlight for parents. Children develop a love of reading and a record 92% of them completed the reading challenge.

OPEN DAY FOR 2020 SCHOOL STARTERS

Is your child starting school in September 2020? Would you like a nurturing place where all three year groups have outside learning environments, Forest School and access to an outdoor swimming pool? Do you need onsite breakfast and afterschool clubs, enabling 8am drop-off and 6pm collection? Then please visit us:

Open Day, Thursday 9th January at 9:30am

Booking essential. Please contact the school office on 01483 277291 or info@ewhurst.surrey.sch.uk | More info at ewhurst.surrey.sch.uk

CRANLEIGH FUNERALS

Complete Funeral Furnishers

&

Memorial Masons

Tel: 01483 275758 (24hr)

“A caring privately
owned independent
family business”

COMPLETE
FUNERAL FURNISHERS

DIRECT FUNERALS

PRIVATE CHAPELS

MONUMENTAL MASON

sandra@scancad.co.uk

IMMEDIATE ATTENTION DAY OR NIGHT



Sussex House, Ewhurst Road, Cranleigh, Surrey GU6 7AE

**Church for those who don't
do traditional church**



**Every second Sunday in
term time at 5.00 pm,
Holy Trinity Forest Green**



The Parish of Ewhurst
with Okewood & Forest Green

4pm December 8th Messy joins with the Christingle at St Peter & St Paul, Ewhurst

*A fun, creative service for the
young at heart!*



**20/20
Puppet Service**



Every first Sunday of the month
in term times, 10.30am at
St Peter & St Paul, Ewhurst

Church Service Times

Please note that service patterns change during the Christmas period, see p23 and p41

Ewhurst | St Peter & St Paul

1st Sunday: 9am BCP* Communion, 10.30am Family Service, 6.30pm Choral Evensong | **2nd Sunday:** 8am BCP Communion, 10.30 Holy Communion CW** | **3rd Sunday:** 8am BCP Communion, 10.30 Morning Worship CW | **4th Sunday:** 8am BCP Communion, 10.30 Holy Communion CW | **5th Sunday:** 8am BCP Communion, 10.30 Morning Worship CW

Treasure Seekers Sunday School 10.30am happens on 2nd, 4th and 5th Sundays

Okewood | St John The Baptist

1st Sunday: 10.30am All-Age Service | **2nd Sunday:** 10.30 Morning Worship CW | **3rd Sunday:** 10.30 Holy Communion CW | **4th Sunday:** 10.30 Morning Worship CW | **5th Sunday:** 10.30 Morning Worship CW

Megazone Sunday School happens every 3rd, 4th and 5th Sunday at 10.30am

Forest Green | Holy Trinity

1st 3rd 4th and 5th Sundays: 6pm Evening Service (Communion on 1st)
2nd Sundays: 5pm, Messy Church

**Book of Common Prayer **Common Worship*



ONLY IN CINEMAS

ANDRÉ RIEU

THE VIOLINIST, THE CONDUCTOR, THE MAN HIMSELF!

70 YEARS YOUNG

CELEBRATING HIS FAVOURITE CONCERTS
FROM AROUND THE WORLD

4 & 5 JANUARY 2020

BOOK YOUR TICKETS ONLINE OR AT THE BOX OFFICE

Box Office: 01483 278000

www.cranleighartscentre.org



URGENT MESSAGE FROM THE CHURCHWARDENS

The Parish costs nearly £10,000 a month to run and is forecasting a loss of some £7,000 this calendar year. This is largely because there have been some exceptional maintenance costs and fundraising efforts have been focussed on the roof repairs at Ewhurst. This means that we will need to appeal to the generosity of our parishioners to help where they can by making a regular monthly contribution or increasing their contribution if possible, especially taxpayers because we can claim gift aid to increase their contribution by 25%. Thank you.

EWHURST CHURCH CHRISTMAS CARDS **On sale now!**

These are on sale now in the Wilson Room. There are four new designs to choose from. Each design is sold in packs of ten for £4.



Continued from p11

who he'd met six years earlier on her travels from Ewhurst, he decided to buy 160 acres of farmland 'with just a fence around it', and this is where they later celebrated their wedding in 2002.

The UK beckoned soon after the birth of their daughter Neave, and the young family decided to leave Australia and start a new life. Arriving with no job, no house, nor much in the way of savings, Richard's Australian contacts helped him find work first in Poland and, for a short time in Australia directing Comic Relief. After stepping in to cover for a colleague on the UK's version of Deal Or No Deal, he was asked to direct it full time.

After moving to be with family in Ewhurst, in 2007 their second daughter Anouk was

born. When Anouk was just two, they discovered she was seriously ill with a brain tumour and life was put on hold whilst they cared for her. During the preparations for the 2012 carnival Richard was compelled to bring musicians from around the village together to perform and the Fabulous Nobodies were born.

Tragically just a few weeks after dancing at the carnival, Anouk died.

Richard plays an active part in village life on stage and behind the scenes as well as directing many of our favourite TV shows. His advice for anyone who wants to listen is 'if you see an opportunity, you've got to take it', and signs off by saying 'I just hope I'm good for another 10 years!'

Friday 6th March 7.30pm
Ewhurst Village Hall

CHARITY QUIZ NIGHT

with Quiz Master Geoff Harry

TICKETS £10

(include a Ploughman's Supper)
BYO drinks and glasses | RAFFLE

Tickets on sale from mid January

Contact Jane Harry
01483 275047

geoffjane67@gmail.com

PARISH BREAKFASTS

Delicious food, inspiring talks

WOMEN

8.45 Ockley Cricket Pavilion

Jan 18, May 16, Jul 18, Oct 17

Belinda Kerry 01306 627386
belinda.kerry@gmail.com

MEN

8.30 Oakwood Village Hall

Feb 15, May 23, Aug 22, Nov 14

Barry Thomson 01306 621234
barry.thomson@btconnect.com

JOINT

8.30 Oakwood Village Hall

April 4

Call either contact above

**Good news! Carol Franklin-Adams' Christmas Shopping Fair on October 11
at High Edser raised over £3000 for Alzheimer's Research. Well done!**

THE ARTS SOCIETY LECTURE

Every 4th Wednesday*, Cranleigh Arts Centre

Wednesday 22nd January

*Franz Schubert: The Piano and the
Power of Friends*, including recitals
by speaker, Dr Graham Griffiths.

Wednesday 26th February

*The Great Exhibition: Victorian Technological
Prowess and Self-confidence* - its secrets
revealed by Dr Prasannajit de Silva



**THE ARTS
SOCIETY
CRANLEIGH**

*Every 4th Wednesday of each month, except August
and December, at 2.00 pm and 7.30 pm (same lecture)
www.theartsocietycranleigh.org

Cont'd from p53

The inside of the chancel roof now holds secrets. A hatch was put into the chancel ceiling and we have left a time capsule box up there ready to be discovered in the distant future. The capsule holds information about the restoration work, with the names of all who contributed to the "Save a Slab" appeal. Also included are contributions from all the village schools and organisations giving future generations a snapshot of what life was like in our village.



The box was blessed by Rev Rosemary Mason during a service and celebrations in November then later put in place by the workmen. We decided that climbing

ladders and scaffolding was not a good idea during a service.



Most of the restoration work is now done. Some external stonework repairs will be done in the Spring when conditions are more favourable. Just scaffolding towers will be used, so it should not impact on access to the church. The next main work will be to tell the story of our church through activities for both adults and children, to give them a fuller understanding of how and why it has changed over hundreds of years and the meaning of its features. Funding is still needed to cover all aspects of the work and we hope you will continue to support us.

Are you following us on Facebook? [facebook.com/eofgparish](https://www.facebook.com/eofgparish)

Editorial information

News & Views is published quarterly and distributed free to 1500 homes across Ewhurst, Walliswood and Forest Green on March 1, June 1, September 1 and December 1. Deadline for advertising and copy (articles, events, etc.) is four weeks prior to distribution. The editor reserves the right to prioritise and edit articles in order to reflect the Parish mission and maintain page count. Contact: will.shepherd@mac.com

Advertisers

Ben Nicholson Tree Surgery	54	Cranleigh Arts Centre	56
Glenn Bicknell Fencing	6	Mina Milanovic Photography	14
Hugh Tanton Garden Design	4	Dance a Ramix Fitness & Dance Studio	52
Loxwood Landscapes	20	Pamper Me Organic Facials	40
Robin Horton Garden Design	14	Comprehensive Footcare	20
Second Nature Landscape Design & Build	48	RA Wimbledon Chiropodist	4
Jon Rapley, Ground & Garden Maintenance	52	Shan's Toenail Cutting Service	50
R Good Mowers Garden Machinery Repairs	46	Surrey Hills Rehabilitation Services	6
John Shaw Building Services	40	Cedar Court Care Home	2
PJM Home Construction Services	42	BrightCare In-Home Senior Care	63
Robert Hay Home Planning & Design	20	Cranleigh Funeral Services	56
Tailor-Made Curtains & Blinds	10	Woodford Family Funeral Services	12
MJDH Painting & Decorating	4	Communities Against Gatwick Noise Emissions	46
DM Handyman Services	8	The Bull's Head Pub & Guest House	22
PGH Pest Control & Prevention	52	Hazelbank Stores	20
Ede Bros Removals Storage & Shipping	46	Hunters Lodge Veterinary Practice	4
Surrey Hills PC Computer Services	8	Sheppy Dog Walking, Daycare & Boarding	50
Bullimores Chartered Accountants	12	Blue Ticking Vintage Children's Furniture	40
Jennifer Margrave Solicitors	40	Surrey Restoration Antique Furniture Repair	6
Duke of Kent School	64	Skoda Garage	8
Glenn Bicknell Stoves	6	MES Car Servicing & Repair	54
Green Life Gurus Heating Specialists	46	Carter's Car Care	48
Okewood Nursery	62		



Okewood Nursery is more than just a nursery. We are able to accommodate all your childcare needs for children from 1 to 10 years of age. We offer nursery care and holiday care.

**01306 627067 | okewoodnursery@gmail.com
okewoodnursery.com**



In-Home Senior Care and Companionship

We find joy in alleviating the stress and frustrations associated with quality care provision for family members, and empowering elderly people to live with dignity and purpose in the comfort of their own homes.

As experts in senior care, our award winning, fully managed, and fully regulated service means we take the stress out of managing care provision, so you can spend more quality time as a family.

Your care belongs to you. Have a conversation with us today.

☐ 01483 617 121 ☐ cranleigh@brightcare.co.uk



Member



☐ Bright Care Cranleigh, Oliver House, Cranleigh, GU6 8AU ☐ www.brightcare.co.uk



Outstanding education with a breath of fresh air

Duke of Kent School is an excellent school in an inspiring setting. We focus on educating the whole pupil and care deeply about each child.

Our key aims are to:

- get to know and value each and every pupil as an individual
- develop their personal and academic interests, allowing them to grow and flourish
- teach them that effort reaps rewards
- expect them to strive for personal bests in the classroom, on the sports fields, and in the arts
- guide them to become reflective learners
- encourage them to work hard and to persist towards their goals

*"The quality of the pupils' personal development, academic and other achievements is excellent."
ISI, January 2017*



DUKE of KENT
SCHOOL

Co-education from 3 to 16

Duke of Kent School, Peaslake Road, Ewhurst, Surrey, GU6 7NS
T: 01483 277 313 | E: office@dokschool.org | dukeofkentschool.org.uk