

# nEWs and viEWs

from the Churches in Ewhurst

Issue 47 Summer 2014



  
Cedar Court  
care home  
sharing minds and hearts

## *Luxury brand new suites now open*

The much-anticipated Alexandra Suites at Cedar Court Care Home, Cranleigh are now open. This collection of just 16 brand new luxury suites boast superb accommodation and combined with award winning care services offer elderly residents the perfect home from home environment.

Complementing the new suites is a brand new Bistro, The Keats Library, the Cedar Sanctuary and splendid gardens created by a Chelsea Flower Show Gold Medal Winner.



For more information pop in for a cup of tea and a chat.  
Let us show you we care.

**Tel. 01483 275 191**  
residential, nursing and dementia care

Cedar Court Care Home, Essex Drive off Elmbridge Road  
Cranleigh, Surrey GU6 8TX [www.cedarcourtcarehome.co.uk](http://www.cedarcourtcarehome.co.uk)

Printed by Andrew Lock of Top Print

**nEWs and viEWs from the churches in Ewhurst**

**Highlights of Issue 47**

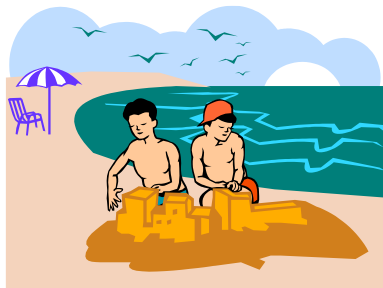
Churches Together in Ewhurst	page	5
News from St Peter & St Paul's	pages	7-23
News from the Baptist Church	pages	24-28
Ewhurst Playground Project	page	31
Ewhurst Parish Council	pages	32-39
Rainbow's End Pre- School	pages	38-39
News from Ewhurst CE Infant School	page	41
In Our Midst	pages	43-45
Local History Corner	pages	46
Ewhurst Evening WI	page	49
Upcoming Entertainments	page	52-53
Cover: Leith Hill Place	Jan Jesson	

**THE BRITISH HOLIDAY**

by Pam Childs

Sun cream, hats and buckets and spades  
on the beach they happily played,  
a break for lunch Mmm fish and chips  
off to the kiosk for ice cream (three trips)!  
Into the sea shouting and splashing  
then came the thunder loudly crashing

We hurriedly packed up,  
then came the tears..  
don't cry we told  
them ...we'll come back  
next year!



**nEWs and viEWs from the churches in Ewhurst**

The Hoppa provides a range of services for anyone in the community – REGARDLESS OF AGE or ABILITY – who does not have easy access to Public Transport. This means young and old alike as well as those in between, and anyone with a disability, regardless of whether it is permanent or temporary.


**“Hop on a HOPPA today!”**

For full details of services and prices, for an applica-

**Hunters Lodge  
Veterinary Practice**

**Philip M Stimpson MA, VetMB,  
MRCVS**

**1 Mapledrakes Road  
Ewhurst GU6 7RG**

41  01483 276464 Wood-  
bridge Hill,  
Guildford GU2 9AD

01483 570782



**Rumbeams Cottage  
Products  
Quails Eggs**

*£1.50 a doz.*

**My eggs are produced by  
pampered quails.**

I raised the quails from eggs, they are as free-range as something that size can be, and they are fed extremely well!

If you would like to place a regular order, please call me on 268627. Alternatively, just telephone when you would like some. All orders delivered to your door!

*Rumbeams Cottage, Ewhurst  
Green: 268627*

**Mrs R.A. Wimbledon**

**State registered chiropodist**

**Surgery (doorstep parking)  
& visiting practice**

**Established 30 years  
The Street, Ewhurst**

**Tel: 01483 277505**

**nEWs and viEWs from the churches in Ewhurst**

**GLEBE COFFEE MORNINGS**

*(arranged by the two Ewhurst churches)*

*Did you know that on every Wednesday morning  
throughout the year,  
tea, coffee and cakes are served at the Glebe Centre?  
So, if you are at home and don't feel like putting the  
kettle on,*

***Why not meander down to The Glebe and have a  
cuppa with us?!***

*We are sure you'll meet up with folk you know -  
and are bound to make lovely new friends living  
somewhere around the village.*

*Doors open at 10.30 am through to lunchtime  
(and the cost is a small donation towards more coffee!)*

***HOPE TO SEE YOU SOON!***

***Churches Together in Ewhurst***



*'Serving God and our community by  
reflecting God's love in all we do'*



***Come and join us on Aug 10th @ 3.00pm***

*for an open air service for all the family  
on the Ewhurst Recreation Ground, Broomers Lane.*

*Bring your own tea-time picnic - refreshments available.*

*(in the event of poor weather we will relocate into the EYSC building)*

**nEWs and viEWs from the churches in Ewhurst**



**Rainbow's End**  
PRE-SCHOOL EWHURST

We are a non-profit making community pre-school in the heart of Ewhurst Village providing early years education for 2 to 4 year olds.

We're open 9:15 till 12:15 term time. We also offer extended sessions till 14:45 on Mondays, Tuesdays and Thursdays

Feel free to drop in or contact us to come and meet the staff and children.



Tel: 01483 808488

Tel: 01483 278378

Email: [rainbowsendpreschool@gmail.com](mailto:rainbowsendpreschool@gmail.com)

Website: [www.rainbowsendpre-school.org.uk](http://www.rainbowsendpre-school.org.uk)

**EwCare**

Ewcare is a good neighbour scheme which provides support to people in the Ewhurst and Ellens Green community.

So don't forget! You can contact EwCare on 01483 277606 between 10.00 am and noon Mondays to Fridays. Please give us as much notice as possible of your request so that we can find a volunteer to help you.

We are always looking to increase the number of Duty Officers — can you spare just 2 hours a month to man the EwCare phone? We also need car drivers, for both short journeys and trips to RSCH, please get in touch with Angie on 01483 277505 or Di on 01483 277679.

**DON'T FORGET US**



**Summer is coming— is your garden ready?**

- Complete garden design
- New beds and borders
- Planting plans
- Rejuvenating existing beds

**LESLEY WOOD GARDEN DESIGN**

01483 272488 - 0771 228 9777

[www.lesleywoodgardendesign.co.uk](http://www.lesleywoodgardendesign.co.uk)

[lesleymwood@btinternet.com](mailto:lesleymwood@btinternet.com)

## ST PETER AND ST PAUL'S CHURCH



On the 29<sup>th</sup> June 2014, at Canterbury Cathedral, an evensong will take place in commemoration of Bishop Samuel Crowther. The Archbishop of Canterbury will preach as we remember the astonishing ministry of the first black African Bishop in the Anglican Church who was consecrated Bishop at Canterbury in June 1864.

As The Bishop of Guildford's Link Officer for Nigeria I have overseen our Diocesan link with the church of Nigeria over the past 10 years and have been visiting for even longer, and I have become more and more aware of the debt we all owe to this remarkable man, especially our friends in the Nigerian church where he is widely revered and celebrated. Here's my understanding of Crowther's life:

He was born 'Ajayi' in Yorubaland, in the part of Africa we now know as Nigeria in around 1807. When he was about 12 years old his village was raided by Muslim Fulani slave traders and Ajayi was sold to Portugese traders. The British had by then outlawed slavery and intercepted Ajayi's ship, taking it to Freetown in Sierra Leone, a colony established as a model Christian community to receive freed slaves. There Ajayi was educated and baptised, taking the name of a CMS clergymen, Samuel Crowther.

The young Crowther studied African languages and accompanied an early mission along the River Niger.

His skills were recognised and he came to England to study further under the guidance of CMS (the Church Mission Society) and was ordained Priest in 1843. Further missionary expeditions followed with Crowther increasingly taking charge. In 1851 he visited England again where he had an audience with Queen Victoria and Prince Albert and spoke at meetings across the country to great effect.

Cont'd

Come and see who lives in the garden  
of Rumbeams Cottage, Ewhurst Green

Visit on Saturday June 21st, from 3.00pm until  
5.00pm

for

**Tea in a Midsummer Garden.**

Free Entry

Talk to the animals, eat delicious home-made cake,  
meet Scruffy and try your luck at the  
raffle, croquet and garden dominoes.



In aid of The Bible Society.

**Ewhurst Parish Church      Holiday Club 2014**

***CALLING ALL SUPERHEROES!!***

All Superheroes will be needed at the village school on  
Mon 4<sup>th</sup> Tues 5<sup>th</sup> and Wed 6<sup>th</sup> August Get your family to  
put these dates in the diary.

*More details later.*

***CHRISTMAS CARD PHOTOS FOR 2014***  
***(Sorry to mention the "C" word so early!!)***

We will need photos to use on our Church Christmas cards in late  
August/early September so that we have time to make our selection  
and get the chosen designs to the printers ready for sales in October.

If you have any photos you think would be suitable, please e-mail them  
to Jane Harry (geoff@ewhurstgreen.fsnet.co.uk) as condensed jpgs  
before **Friday 29<sup>th</sup> August** if possible.

**Please Note**

Photos need to be in landscape layout and we are especially looking for  
winter/village/Christmassy themes



## ST PETER AND ST PAUL'S CHURCH



Crowther led an expedition of entirely African Missionaries up the Niger River in 1857. His language skills and wisdom made him particularly effective in speaking to Muslims.

In 1864 with the backing of Henry Venn, secretary of CMS he was recalled to Canterbury to be consecrated Bishop. He returned to his missionary work in Africa.

Sadly a new generation of churchmen in England mistrusted the use of native church leaders and after Venn's retirement and death white men began to take on responsibility for mission in Africa. Crowther and his African staff were sidelined and replaced by European missionaries. A disheartened man Crowther died in 1891. Crowther's legacy can be seen across Nigeria and in the passion for the gospel that is the hallmark of Nigerian Christians, who will be eternally grateful to the early British missionaries.

I have visited many sites where Crowther's name is whispered with reverence. I have been many times to modern Port Harcourt and it is there, and particularly the island of Bonny, where his mission along the Niger began. At the confluence of the mighty Niger and Benue rivers in the heart of Nigeria I visited his first Church and the first Primary school in Northern Nigeria which he established in 1865 (many years before the place was called Nigeria) – it is still in use in the grounds of modern Lokoja cathedral as a Sunday School. Though Crowther's original mud church has long been demolished the present cathedral is built on Crowther's original foundation stone.

It was the Guildford/Nigeria Link committee that recommended some sort of tribute to Crowther on this 150th anniversary of his consecration as Bishop, and we were delighted that our Archbishop, Justin Welby responded so positively. I shall be sitting in Canterbury Cathedral on that night to pay my own respects as we remember the slave boy who overcame all odds to become Bishop Samuel Ajayi Crowther. *Rev'd David Minns*

## SONNY'S CAFE

is open in the Wilson Room at St Peter & St Paul's church on school term mornings.

Just drop in on Monday, Tuesday, Thursday or Friday from 8.45am until mid-morning. We serve Fair Trade tea and coffee, soft drinks and biscuits in the wonderful surroundings of our new room, in the heart of the churchyard.

There are toys for the children and a warm welcome for everyone—stay as long as you like and make new friends!

## St Peter & St Paul, Ewhurst Toddler Group



### Toddler Group

Toddler Group continues to thrive and is very productive of children and sometimes Baptisms.

We meet on Fridays during school Term time and all toddlers are welcome with a responsible adult,

Our holiday in summer will be as follows:

Last meeting of the term will be on July 18th  
and we will recommence on September 12th at 10.00 am  
until 11.30 pm.

Have a good Summer time.

Pam, Rosie, Jan and Tricia.

**Pam Childs(01483 277511)Tricia Hislop(01483 274359)**

**nEWs and viEWs from the churches in Ewhurst**

---

**DIARY OF EVENTS  
AT ST PETER AND ST PAUL'S CHURCH**

Friday June 6th	Summer Soiree in the Wilson Room	7.30pm
Saturday June 7th	Summer Soiree in the Wilson Room	7.30pm
Sunday June 8th	BCP Holy Communion Holy Communion with Treasure Seekers	8.00am 10.30am
Saturday June 14th	Guildford Cathedral Abseil	9.30am
Sunday June 15th	Breakfast Service Morning Worship	9.15am 10.30am
Saturday June 21st	Midsummer Tea at Rumbeams Cottage	3.00pm
Sunday June 22nd	Holy Communion with Treasure Seekers Summer Songs of Praise in The Old Rectory	10.30am 6.30pm
Saturday June 28th	Gift Day	
Sunday June 29th	BCP Holy Communion Patronal Festival Service	8.00am 10.30am
Tuesday July 2nd	Charity Cream Tea in Rectory Garden	2.45pm
Sunday July 6th	BCP Holy Communion 20/20 Service followed by Scruffy's Sausage Sizzle Choral Evensong	9.00am 10.30am 6.30pm
Wednesday July 9th	Pastoral Assistants Licensing Service, Guildford Cathedral	7.30pm
Sunday July 13th	Holy Communion with Treasure Seekers	10.30am
Sunday July 27th	Pet Service in the Rectory Garden	10.30am

**Commotion, Disruption and the Holy Spirit**

As I write this in early May, I am aware that you will not read it until June when it will be close to Pentecost. However, my thoughts are still held by Easter and I would like to share them with you.

This year, for a number of unrelated reasons, my days before Easter Day were disrupted by disturbing events; a routine hospital visit which led to distressing side effects; a death at the Nursing home where I work; a night at the hospital Outpatients Department all of which contributed to a very different approach to Easter Day from my usual habitually calm and peaceful Holy Week. All of which have led me to reflect that being disturbed out of their usual routine is exactly what happened to the people around Jesus.

Throughout his life Jesus' presence led to disruption and commotion. When Gabriel appeared before Mary to tell her she would bear Jesus as her Son, her life was thrown into turmoil, she was disgraced in the eyes of her community, her future husband doubted her integrity, the birth was in a strange city far from home and in a stable.

And Palm Sunday, although we think of it as a celebration with waving palms and cheering crowds, the presence of Jesus caused consternation for the leaders of the Synagogue and the Romans.

The Passover celebration in that Upper Room – which we call The Last Supper - took place amid the tension of the authorities and unease and betrayal. Jesus' most cruel death was accompanied by earthquakes and tombs being opened, so that dead people walked and the veil of the temple was ripped apart. All of these were traumatic events causing commotion and distress.

Three days later rather than being able to properly tend Jesus' body, the women discovered angels at the empty tomb saying, '*He is not here, he is risen*'. Nothing was normal or peaceful at all. Even when the risen Jesus appeared before them, the disciples were terrified until they realized it was indeed Jesus. So why should I expect Easter to be calm and 'holy'? Indeed what does 'Holy' look like?

At the first Pentecost the friends who gathered with Jesus for the Passover meal, the Last Supper, had remembered that Jesus

## **nEWs and viEWs from the churches in Ewhurst**

---

took bread, blessed it, broke it and shared it with them and told them to do this to remember Him. On their Holy Sabbath day, set aside for God, they gathered together in the room they used to worship and to pray. Once more they were disturbed out of their routine, and thrown into fear, confusion and commotion as flames appeared and the sound of a mighty wind filled the room. Amazingly they found they could speak in foreign languages so that the people outside could understand them. They also had confidence to speak to the crowds of people in Jerusalem about the risen Jesus. The disciples had grown during the time since Jesus' death and resurrection to a new and different life and they now were filled with the Holy Spirit, the Comforter, the enabler. They had progressed – leaving the old life behind and going forward to their new life – as they journeyed from Easter Resurrection to receive the Holy Spirit at Pentecost.

Perhaps we too have journeyed to a new place where we are renewed, as all things are made new in Jesus. Jesus who is both Christ the King and the Suffering Servant and who can fill our hearts with His Peace, perhaps will make us just a little bit Holy.

As we walk with Jesus and come together to share Holy Communion maybe our lives will be stirred in new and unexpected ways.

### ***Introduction to the Peace for Pentecost***

God has made us one in Christ. He has set his seal upon us and, as a pledge of what is to come, has given the Spirit to dwell in our hearts. Alleluia

*Rev'd Tricia Hislop*

## **Gift Day**

### **Saturday 28 June 2014**

**Your chance to support Ewhurst Parish Church.**

**It can't survive without your help.**

**More information on how to make your gift and why it's vital for the future of our**

**Parish Church is in the Gift Day leaflet delivered with this issue.**

**We have also enclosed a Time and Talents leaflet if you would like to have a more active role with the church**

**Join us to celebrate our Church's Birthday  
ST PETER AND ST PAUL'S  
PATRONAL FESTIVAL  
Sunday June 30th  
at 10.30am  
Everyone is welcome**

**THE MEMORIAL WALL**

As you may be aware, we are running out of space in the Memorial Garden for many more plaques. As a result, we have been investigating the construction of a Memorial Wall in the churchyard opposite the east end of the church. Plans are being drawn up and quotes are being sought prior to our approach to the DAC for approval.  
Liz Tingley



**M.E.S** Mechanical Engineering  
Services

**Bookings 01483 351964**

**Servicing,  
Repairs & MOT  
for all makes  
of vehicle**

**Full Engine  
Diagnostics**

**Maintain your  
Vehicle Warranty  
when you use us  
for all your  
Automotive  
Needs**



**Free  
Collection  
and Delivery**

**Courtesy Cars  
Available**

Visit our website

**[www.carscranleigh.co.uk](http://www.carscranleigh.co.uk)**

**nEWs and viEWs from the churches in Ewhurst**

---

**FROM THE PARISH CHURCH REGISTERS**

**Baptism:**

March 2nd	Lara Bradley
March 16th	Joshua Lyford
April 6th	Jodie and Megan Barr
April 27th	Poppy Brown

**Wedding:**

May 23rd	Toby Heales and Victoria Hill
----------	-------------------------------

**Thanksgiving:**

March 14th	James Meyer
------------	-------------

**Interment of Ashes:**

April 29th	Michael Parsons
------------	-----------------

<b>PATTERN OF SERVICES</b>			
WEEK	8.00 A.M.	DAYTIME	6.30 P.M.
1		9.00 am BCP Communion 10.30 am 20:20	Choral Evensong
2	BCP Communion	10.30 am Holy Communion - Common Worship (Treasure Seekers)	
3	BCP Communion	9.15 am Breakfast Service 10.30 am Morning Prayer	Evening Worship
4	BCP Communion	10.30 am Holy Communion - Common Worship (Treasure Seekers)	
5	BCP Communion	10.30 am Morning Prayer (Treasure Seekers)	

*N.B. Check service details by looking in the weekly church news sheet or in the church porch*

## Why the Parish Church has a Gift Day

You will have received a leaflet about the Parish Church Gift Day in this magazine. The £55,287 required this year to maintain a church ministry in Ewhurst, is donated by just 150 people.

However, after that is paid, the church **still** has to find the money to pay for all the running costs such as, utility bills, church and churchyard maintenance, stationery, music and office expenses. This makes the total cost to run the church £95,000 a year. These other expenses are the costs we are **unable** to fully cover and why we ask the village for help. This year, we start again with a deficit of just over £24,000. This is similar to last year but then, with your generosity on the Gift Day, our Fund Raising events which you supported and careful management, we reduced this to just over £7000 in the last financial year.

We hope that you will be as generous and supportive again this year.

We have again had to resort to the undesirable measure of drawing on church reserves to cover running costs. We have been given a generous capital donation this year, but this is for investment, not for general spending. We plan that this will generate income to help towards covering our deficit, but extra money will still be needed to reduce the amount we take from our reserves.

Taking from our reserves is not good and we cannot continue to do this. Eventually, we could lose our own Rector and **not** get anyone in his place. The people in the Church feel very strongly that they do not want this to happen. But without more money coming in, it could. Losing our own Rector could also impact on this community as the church becomes less able to deliver what Ewhurst expects of it.

Please be aware of this when it comes to our Gift Day and also perhaps, consider making a regular monthly donation towards the running of our lovely church.

*The Fund Raising Group*



**SUMMER  
SONGS OF PRAISE**

in the Grounds of  
The Old Rectory  
Ewhurst, GU6 7PX

(By kind invitation  
of The Geoghegan Family)

**Sunday 22nd June**

**6.30 pm**

**ALL WELCOME**



## THE BIG ZIP WIRE CHALLENGE!



If you would like to do the abseil there may be a place left so ring Tricia Hislop on 274359 to find out

# BEN NICHOLSON

## TREE SURGERY FELLING & FENCING

### SAWN TIMBER

eg fencing, logs, oak beams,  
weather boarding etc

Tel: (01483) 548754

Mob: 0771 9026998

**Fully Insured**



## Maybe not *quite* **BRAVE** enough?

...To climb to the top of Guildford Cathedral and then abseil down on a zip-wire?

...In aid of St Peter and St Pauls Church, Ewhurst and Ewhurst Infant School.

...taking place on Saturday 14th June 2014

## Then please sponsor someone who is!



Only 48 people can take part.

Each abseiler has to raise at least £200.

Participants can raise money for the School, the Church or both.

If you know one of the participants, fill out the form below and we'll add your sponsorship to their form.

Don't worry if you don't know one of the brave—fill out the form below and we'll add your pledge to the cause of your choice.

Want to pay by debit/credit card? Fill out your details and we'll give you a call to explain how you can do this.



Saint Peter and Saint Paul's Church



➡ **Yes, I'd like to sponsor one of the participants!**

Their name is .....

I don't know who to sponsor but I'd like to support:

**The Church/The School/Both**

*(delete the ones that don't apply)*

➡ **I'd like to pledge** £ .....

Your Name:

Your Address:

Phone Number:

Email:

I am a UK Tax Payer and would like the Organisers to reclaim GiftAid on my Donation

YES / NO

I would like to pay by Credit/Debit Card

YES / NO

Please return completed forms to Abseil Event Organiser, Ewhurst CofE Infant School, The Street, Ewhurst, Surrey, GU6 7PX

### **TEDDIES WANTED!**

**The Rectory Fete 2014 will need Teddies  
of ALL sizes for the Teddy Bear Trail.**



If you have unwanted Bears at home or can get  
some from a Charity shop etc, we would love to  
have them.

Put them in a bag marked "Teddies for Fete" then take them to  
the Wilson Room at these times:-

Mon, Tues, Thurs, Fri - 8.45 - 10.00 in term time

Sundays after the 10.30 service

If you buy them, please contact Michelle Matthews  
01483 267790 for a refund.



**STRAWBERRY TEA**  
**IN THE RECTORY GARDEN**  
**WEDNESDAY 2ND JULY**  
From 2.45 pm UNTIL 4.30pm  
in aid of US



### **Bereavement Group Coffee Mornings**

If you want to talk and meet up with those in a  
similar situation, please ring Tricia on 01483 274359  
to arrange a venue and date.



### **DID YOU KNOW?**

Our church now has its own website with information about ser-  
vices, other events and items available through the church.

Go to [saintpeterandsaintpaulewhurst.org.uk](http://saintpeterandsaintpaulewhurst.org.uk) and see for yourself.

We are also on Facebook : Saint Pater and Saint Paul, Ewhurst.  
You can e-mail us on [ewhurstchurch@yahoo.co.uk](mailto:ewhurstchurch@yahoo.co.uk)

**Ewhurst St Peter and St Paul's  
Is calling all Superhero's to the Rectory Fete**



**St Peter and St Paul are holding its annual Church Fete on Saturday 20th September from 12.00 - 4.00pm, in the grounds of The Rectory, The Street Ewhurst GU6**



As usual, there will be lots of traditional side stalls and games and other attractions such as a Superhero challenge!!!

BBQ, teas, plant and cake stalls, craft stalls, ferrets, tombola, raffle,

fancy dress competition for all ages theme this year is 'Superhero's, and don't forget to go on our wonderful teddy bear hunt and come back and enjoy the teddy bear picnic, only £3.00 including the teddy bear you find.



**The Bell tower will be open**

**Entrance to the Fete is Free**

## nEWs and viEWs from the churches in Ewhurst

### **Planned Giving and Ewhurst Parish Church**

*Planned Giving is mentioned on the Church Gift Day leaflet that was delivered with this month's News and Views*

Planned Giving is important as, to help safeguard the church's future, we need to plan ahead. This is much easier if we know, in advance, how much money we have coming in. Regular giving, known as Planned Giving, helps us achieve this. Planned Giving means agreeing to give the church a set amount of money (decided by you) each month/quarter/year. This makes managing the church's future less precarious.

If you could be part of the Planned Giving scheme, it would make a real difference to how the church continues and develops. The scheme is completely confidential and under your control.

*To find out more about the Planned Giving scheme, please contact the Stewardship Officer:*

*Mr P Henry,  
Broadstone Cottage, Gadbridge Lane, Ewhurst, GU6 7RW  
Tel: 01483 275380*

### **WOMEN'S FELLOWSHIP—All Ladies Welcome**

Women's Fellowship:- this is a very friendly group. We meet once a month and our programme covers a variety of subjects.

Meetings are at 2.30pm unless otherwise stated **on the second TUESDAY in the month.**

Tuesday June 10th

"Adventures in India" a talk by Mary Fairfield

Tuesday July 8th

Tea in the Garden

Tuesday August 12th

Outing to Charmer Cheese in Rudgwick



**JUST A NOTE ... CHORAL SINGING**

Preparing for Stainer's Crucifixion this spring was an interesting and enjoyable experience bringing together singers from outside the church, the village and also singers unfamiliar with that particular work and style. Building on that experience future rehearsals in music making in the church will move to 2 new levels.

Starting immediately, the 4<sup>th</sup> Friday of each month will be devoted to genuine choral singing - singing in parts; with a varied and interesting repertoire including anthems, psalms and traditional hymns. Hopefully something that will appeal to choral singers.

Following on from that in the autumn the 1<sup>st</sup> Friday of the month practice will be devoted to modern worship songs, gospel music and the new age repertoire.

In the past the choir has accommodated all styles in its weekly rehearsals. It is hoped that this fresh approach may appeal to singers who do not currently sing in, *the choir*, but would like to get some hands-on singing experience with not too much commitment, i.e. a weekly practice.

The opportunity is open to all and all voices will be warmly welcomed. For more information speak with me, Valerie, telephone 01483 275380 or email [val.henry@mgownersclub.net](mailto:val.henry@mgownersclub.net) and, do please visit the church's website to check-out dates and timings of rehearsals. All are welcome, no singing experience is necessary; the only requirement –enthusiasm and the ability to enjoy the experience!

Our weekly Friday night rehearsals will remain unchanged – 6.30 pm Youngsters, 7.15 pm Adults. No matter what your level of experience/competence all new comers are welcome at any time.

The choir takes a well-deserved break from their weekly rehearsals during August.

**ANNUAL SUMMER SONGS OF PRAISE**

Sunday 22<sup>nd</sup> June in the grounds of the Old Rectory Nursing Home at 6.30 pm by kind invitation of The Geoghegan family, led by The Rector, David Minns. A summer occasion not to be missed. Requests for hymns, anthems, songs, readings warmly invited. Please make your requests known to Val Henry by Sunday 15<sup>th</sup> June.

Much look forward to seeing you round and about. Val Henry.

## **nEWs and viEWs from the churches in Ewhurst**

---

As our initially bright Spring has settled into rather more mixed weather patterns, here at Ewhurst Baptist Church we have been turning our attention to the Summer.

Easter is past and we have enjoyed remembering and celebrating those days along with the congregation of the Parish Church. The weather was fair for us on our walks of witness around the village, and even for our Sunrise Service when we gathered this year at the top of Pitch Hill at 5.50am!

I value the fact that in the village we have two Christian Churches which share a common faith founded in the identity and mission of Jesus of Nazareth. While valuing our unity in Christ I also respect our diversity of worship and tradition which has developed over the centuries that has led us to different ways of "being church". I describe this as respecting our "unity in diversity".

Jesus in his latter days is recorded in John's gospel as praying for his disciples and for all who would believe in his message. A key part of that prayer is his clear desire for his disciples to understand their unity of faith so that their example to the wider world might be one of integrity, word and lifestyle. This is what Jesus is recorded as praying in John chapter seventeen, starting at verse twenty:

<sup>20</sup> "My prayer is not for them alone. I pray also for those who will believe in me through their message, <sup>21</sup> that all of them may be one, Father, just as you are in me and I am in you. May they also be in us so that the world may believe that you have sent me. <sup>22</sup> I have given them the glory that you gave me, that they may be one as we are one: <sup>23</sup> I in them and you in me. May they be brought to complete unity to let the world know that you sent me and have loved them even as you have loved me.

Wonderful words, and vision and yet ones that have at times been poorly lived out in Christian history and sadly, at times, even in our present day. It seems that when we feel insecure we can find ourselves emphasising our diversity first, seeking to establish our superiority over one another.

Personally I find that it is actually our human differences whether of personality, choices, talents etc that make people so wonderful and interesting. We recognise that everyone has a story to tell and a contribution to make regardless of their age, race, gender, education or any of the other things that can separate us.

You may be thinking what idealistic nonsense, just look at the Church's history. But I would suggest that as we look at history



## nEWs and viEWs from the churches in Ewhurst

---

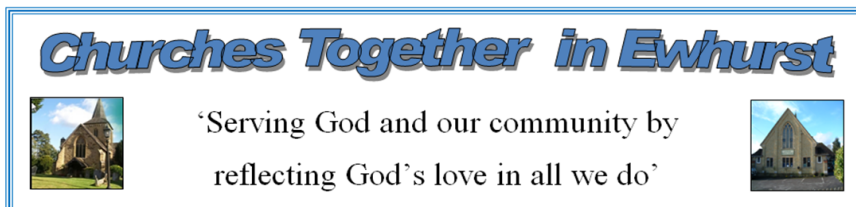
You may be thinking what idealistic nonsense, just look at the Church's history. But I would suggest that as we look at history we should also be open to learning from it and remembering Jesus words and seek to express our shared faith in obedience to him. It is because of the words of Jesus like these that I believe that the churches shared Christian service to this village is important.

So knowing that the whole is greater than the sum of the two parts, on August 10<sup>th</sup> the two churches are holding a joint outdoor worship service on the Ewhurst Recreation Ground. A short and varied service starting at 3pm to be followed by a picnic tea and refreshments. This event is open to all, people of faith and people of little or none.

Do think about coming and joining us for this expression of shared Christian faith in Ewhurst on what we hope will be a fine Summer afternoon.

Finally, for our walks of witness, and other events, David Minns and I recently designed a "churches together banner" the slogan on which tries to capture our sense of promoting Christian faith and unity whilst respecting our diversity of tradition.

God Bless



Rev. Simon Bodington

(Minister)

### **Ewhurst Baptist Church**

Church Office: 01483 267878

Home: 01483 495426

Mobile: 07930 180365

Email: [minister@ewhurstbaptistchurch.org.uk](mailto:minister@ewhurstbaptistchurch.org.uk)

Web: [www.ewhurstbaptistchurch.org.uk](http://www.ewhurstbaptistchurch.org.uk)





### **Prayer for the Village of Ewhurst**

Knowing that prayer changes things, we meet on the fourth Thursday evening of every month at the Baptist Church in order to pray for God's blessing on our community, the village of Ewhurst.

We start at 8.00pm but tend to gather about 7.45pm for tea and coffee.

We normally wrap up by 9.00pm

If you are someone who cares for the spiritual well being of the community you are welcome to join us.

For further details please contact: Simon Bodington on 01483 495426  
or by email: [minister@ewhurstbaptistchurch.org.uk](mailto:minister@ewhurstbaptistchurch.org.uk)  
[www.ewhurstbaptistchurch.org.uk](http://www.ewhurstbaptistchurch.org.uk)



### **Keep Interested – Keep Socialising (KIKS club)**

at Ewhurst Baptist Church

Our Monday afternoon social club, that meets in our church hall, on the 1<sup>st</sup> and 3<sup>rd</sup> Mondays of every month, between 2 and 4pm.

KIKS has been running for a couple of years now and offers an opportunity of friendship, chat, crafts and various board games alongside tea and cake.

**WE WOULD LOVE TO SEE YOU!**

Don't stay home wishing you had a bit of company, put your coat on, come and join us.

Lifts can be arranged, just telephone the church office on 01483 267878



*Serving Breakfast every Sunday*

*at Ewhurst Baptist Church*

*from May 18<sup>th</sup> to August 31<sup>st</sup> between 8.00 and 10.00 am*

*Choice of a hot and cold breakfast.*

*Raising funds for the work of The Ark, Horsham  
- a drop-in centre and food bank for the homeless  
and those dealing with addictions.*

*Do come and enjoy a good breakfast  
whilst supporting this good cause.*



## **BABY AND TODDLER GROUP at Ewhurst Baptist Church Wednesdays from 10:15 to 11:45**

Our aim is to provide an environment in which you and your children can make friends, chat, play and have a good morning out!

Everyone is welcome - mums, dads, grandparents and carers.

Refreshments are available for adults.

A fruit snack is provided mid morning for the children.

A variety of activities are available at each session.

For more information please contact:  
Jackie Bodington on 01483 495426  
or [Jackie\\_bodington@lineone.net](mailto:Jackie_bodington@lineone.net)



## **Room Hire in Ewhurst**

***Need somewhere to hold a meeting or function?***

**Have you considered the Baptist Church Centre?**

Facilities include:

- A large well equipped kitchen.
- A Church Hall that can seat up to 40 people at tables.
- Seating for up to 110 people (lecture style) in the Church.
- Several small meeting rooms.
- Our own car park.

**For Further Information, viewing & booking**

**Call Colin Crick on 01483 267878**

**or for more details / pictures:- [www.ewhurstbaptistchurch.org.uk](http://www.ewhurstbaptistchurch.org.uk)**

**Arthritis**  
Research UK

# Summer Luncheon

**The Old Rectory,  
Ewhurst**

Thursday 19 June 2014  
12.00 noon onwards

Tickets £17  
contact 01483 267 195

- Delicious 2 course luncheon with a glass of wine & coffee
- Raffle & stalls including plants, preserves, books, honey & gifts

**The Old Rectory 25<sup>th</sup> Anniversary**

[www.arthritisresearchuk.org](http://www.arthritisresearchuk.org) In aid of Arthritis Research UK. Registered Charity England and Wales No. 207711, Scotland No. SC041156.

nEWs and viEWs from the churches in Ewhurst

<p><b>LOXWOOD LANDSCAPES</b></p> <p>Paul Gregson BSc Hons</p> <p>Hard and soft landscaping Garden design Any project considered</p> <p>For friendly advice and a free and prompt quotation contact Paul on</p> <p><b>01403 753 204</b> <b>07949 312 402</b> paul@loxwoodlandscapes.co.uk</p>	<p><b>Robert Hay</b> FRICS <b>Planning &amp; Design</b> <a href="http://www.roberthayplanning.com">www.roberthayplanning.com</a></p> <p>Chartered Surveyor offering wide experience in all aspects of Planning, Design &amp; Construction</p> <ul style="list-style-type: none"><li>• Extensions &amp; Conversions</li><li>• New House Designs</li><li>• Planning Applications</li><li>• Building Regulations</li><li>• Planning Appeals</li><li>• Project Management</li></ul> <p>For a free initial consultation telephone <b>01483-277707</b></p>
<p><b>HAZELBANK COUNTRY STORES</b></p> <p>The Street, EWHURST Tel 01483 277442</p> <p><i>Groceries - Greengrocery Beers, Wines &amp; Spirits Tobacco - Confectionery Newsagent</i></p> <p><b>LOCAL DELIVERIES</b></p>	<p><b>COMPREHENSIVE FOOT CARE</b></p> <p>HEALTH PROFESSIONS COUNCIL REGISTERED</p> <p><b>CHIROPODIST/ PODIATRIST</b></p> <p><b>SUE ELLIOTT</b> D.Pod.M., M.Ch.S, HPC REGISTERED</p> <p><b>SURGERIES AT</b></p> <p><b>EWHURST</b> <b>01483 277257</b> AND <b>CRANLEIGH</b> <b>01483 276178</b></p> <p><b>PLEASE TELEPHONE FOR APPOINTMENT</b></p>



### **Ewhurst Playground Project**

We are delighted to say that work on the new Playground has started.

Fencing has now gone up to protect the demolition of the old playground area and the construction of Phase 2 of our new playground.

The first phase of the playground is still available for playtime with a new entrance on the football ground side of the playground.

Work on the playground will take approximately a month - weather permitting. Following the completion of the new ground work and the assembly of the new equipment the whole area will need some time for the foundations to settle and the grass and new surface to stabilize.

At the same time an outdoor table tennis table will be installed close to the playground, within the fenced area which we hope will also be used by the older members of the community - Including the teenagers and the more mature!

The official opening of the Playground will take place at the carnival on July 12th but we are hoping that the children will be allowed in before that.

We would like to take this opportunity to thank all those who have supported this project. We have raised all the funding that we needed with the help and support of so many people.

Thank you to you all..

#### **Dog fouling.**

The new construction will include fencing in the picnic area and the trees..

Unfortunately there has been an increase in dog fouling in the area around the playground - one of the reasons why the Parish Council have decided to fence in the picnic area. So that families can be confident that they can relax and enjoy what will be a safe clean area.

Please would all dog walkers take a more responsible attitude to this problem.

there are plenty of dog poo bags available and a bin to place them in.

Please use them! and protect the safety and cleanliness of this area used by so many young children .

## nEWs and viEWs from the churches in Ewhurst

# News from Ewhurst Parish Council



The Parish Council represents the community. This is an easy statement to make but a hard act to achieve. It is hard because, throughout the community there are of course many different views and opinions and stand points. When the Council say they represent the community, must they represent the majority or those that shout loudest or appear to be suffering the most? The Council's view is that they must represent the majority. Quite often it isn't easy to know what the majority think. Recently our request for feedback and ideas with regard to a Village Plan has not generated as much comment as the Council had hoped. How does the Parish Council represent the community if it doesn't know what the community thinks?

Feelings in the community are high at the moment regarding a potential development threat. The Parish Council is doing all it can, step by step, to achieve some sort of control over these outside forces. We have a draft of the Village Plan, which at the moment contains only ideas from a few people, mainly Parish Councillors. We are seeking your views on matters such as: the settlement boundary, should this be allowed to be varied for the good of, say, community housing or are residents unswaying set on keeping the boundary rigid; our Housing Survey recorded a need for Affordable Housing should this be taken into account when deciding planning matters and should this outweigh other considerations; should we push for expansion of the school as increasingly more places are wanted than are available. Please take time to consider the Village Plan add to it or suggest improvements or deletions. Please comment by the end of May; it is the only way that the Parish Council can be sure to be doing the right thing.

The Parish Council enjoyed its Annual Parish Meeting and we had some interesting speakers this year. We heard from Councillor Lyth twice. Once about the Village Plan mentioned above and then about a supplementary Emergency Plan. It is supplementary as it adds to and enhances the Emergency Plan put in place in 2012 as required by Waverley Borough Council. The recent spate of extreme weather has prompted the Council to look at this Plan. We also heard from Sue Henderson concerning Tree Warden Network. There are two tree wardens in Ewhurst, and one of them in the form of Sue gave a very uplifting talk on the value of trees. We also heard from the Ewhurst Players who celebrate 40 years of formation this year. The story of their progress through the years was very entertaining. The Playground Committee member Catherine Van't Reit explained the playground renovation and fundraising that had made it possible. Finally Councillor Turner, described the results of the Affordable Housing Survey and combined this with the Parish Council's news that it had received an offer of some land for Community Housing. This is by no means a *fait accompli* but rather the start of a very long process.



## **nEWs and viEWs from the churches in Ewhurst**

---

The League of Friends has kindly donated a defibrillator to the Community. The Parish Council originally planned to place the Defibrillator in its EYSC building but it was thought generally that the device would not be accessible enough to the community there. Hazelbank Stores have kindly offered to house the Defibrillator in their shop. It will be installed shortly. The Parish Council are arranging familiarisation classes for the device in the village hall. If you are interested in attending a class please let the clerk know as she will need to restrict numbers for those attending to obtain maximum benefit. We can hold any number of classes according to demand. The classes will be on a Wednesday evening in the Village Hall. The first two dates being 22<sup>nd</sup> May and 5<sup>th</sup> June 7pm to 8pm. You can contact the clerk on 01483 267646 or [clerk.epc@btinternet.com](mailto:clerk.epc@btinternet.com)

The Village Carnival with a Mardi Gras theme has prompted the Parish Council to run a Tropical Drinks Stall which we hope will be in keeping with the weather on the day. The Parish Council will be in Tropical attire so again we do hope for some warmth.

The Council now has a BIFFA bin placed in the burial ground situated to the left of the grounds shed. It is for all rubbish associated with the graves, for instance plastic wrappings as well as plant debris can be put in the bin. The bin will be transported to the road side when collection is imminent so there may be some days when it appears to disappear for a short while. The rubbish in the burial ground has been a problem and we now hope this will solve the problem.

**GRANT AWARDING POLICY** The Parish Council has recently established a policy for the making of grants to groups and organisations which contribute to the welfare of the community by improving or supporting activities and facilities. There is a form available on the website and from the clerk, to be completed by the grantee. The forms must be with the Parish Council by the 30<sup>th</sup> September prior to the setting of the precept for the next financial year. The applications will be considered as part of the precept setting process and those successful will be notified when the precept is finalised in the New Year. Funds will then be available in late April. The Council hopes this will be a useful arrangement for the Community to spark new projects and ideas.

The Playground refurbishment phase two has begun and will be completed in time for the playground to be opened at the Carnival in July. Please take care during the course of the works as there will be machinery moving around and children may automatically run to that area. The Parish Council are all very pleased to have nearly completed this project which has taken up much time and energy over the past two years to bring into fruition.

Please do e-mail [clerk.epc@btinternet.com](mailto:clerk.epc@btinternet.com) or telephone on 01483 267646 if you have any queries for the Parish Council. If you would like to receive the Parish Council E-Bulletin then please let the Clerk have your e-mail address. The Parish Council's E-Bulletin is a brief e-mail newsletter on current events and urgent matters which is sent out as often as needed.



**Are you worried about your child's literacy and numeracy skills?**

We are a renowned independent school specializing in helping intelligent children struggling with basic skills. We are happy to advise.

**Ring us on 01306 731464**

Moon Hall School  
Pasturewood Road  
Holmbury St Mary  
Dorking  
Surrey  
RH5 6LQ



**LOCAL  
GARDENER**

**GRASS CUTTING  
STRIMMING  
PRUNING  
WEEDING  
LEAF BLOWING**

**TONY WALKER  
07729992674**



**JUNIPER**  
FENCING LTD

All Types of Fencing Supplied and Erected

**JUNIPER HOUSE  
30, CLAPPERS MEAD-  
OW,  
ALFOLD, CRANLEIGH,  
SURREY  
GU6 8HH**

POST AND RAIL,  
GATES,  
CLOSEBOARD,  
PANELS,  
DEER NETTING,  
RABBIT WIRE

**PHONE. 01403752265  
MOBILE. 07841450015  
FAX. 01403753490  
Email. juniperpeter@aol.com  
WWW.JUNIPERFENCING.CO.UK**

## nEWs and viEWs from the churches in Ewhurst

### Parish Council Postscript

Following the **Housing Needs Survey** which went out to all households in Ewhurst and Ellens Green in October last year, the results are in. 80% of respondents were in favour of the principle of developing affordable housing for local people and 21 local households were identified as being in housing need. The findings were presented to the Parish Council at the February meeting.

### Ewhurst Village Development – Planning for the Future

A plan is being devised by the Parish Council. In the near future, EPC will be asking residents their views on future development. Do please take the opportunity to make your comments known. Details will be publicly posted including EPC e Bulletin.



### The Ewhurst Carnival 2014 and Horticultural Society Summer Show

**Saturday 12<sup>th</sup> July, 12.00 to 4.00pm** sees the return of **The Ewhurst Carnival**, a traditional family day out this year with a Mardi Gras theme. The street parade starts at 12.00 noon from the cricket green leading to the recreation ground for carnival entertainment, dog show, stalls, barbeque, bar, teas, the horticultural show and much more.

The celebrations kick off again at 7.30pm with the return of our local band The Fabulous Nobodies, this time with a twist of soul – see who you recognise on the stage...

A fun day for the community organised by the community – come and join us!

Find out more at [ewhurstcarnival.co.uk](http://ewhurstcarnival.co.uk) & [ewhursthortsoc.org.uk](http://ewhursthortsoc.org.uk)

### EWHURST HORTICULTURAL SOCIETY

[www.ewhursthortsoc.org.uk](http://www.ewhursthortsoc.org.uk)



We now look forward to our 121st Summer Show on 12th July. This year held in conjunction with the Carnival on the Recreation Ground. The marquee will open to the public at 2pm.

As usual we have a vast selection of entries. All types of vegetables, fruit, various flowers including roses and sweet peas, pot plants, floral art, photography - titles including "Trees" and "Stormy weather" - Handicraft, and Home fare. Why not make a loaf of bread, some shortbread or a bottle of Sloe gin?? We hope to see lots of entries in the Children's classes. Presentations of awards commences approx. 4.15pm followed by raffle and auction of some of the show entries. All details on website.

Please make a note in your diary:-

Talk by Pippa Greenwood on "Growing Great Veg" at 8pm with a pay bar open from 7pm. Wednesday 1st October at the Village Hall, The Street, Ewhurst GU6 7PX. Further details available shortly.

nEWs and viEWs from the churches in Ewhurst

  <p data-bbox="437 1016 715 1061">Fabulously fun and unique goods. Vintage, new and totally brilliant.</p> <p data-bbox="491 1070 660 1093">www.blueticking.co.uk</p>	<p data-bbox="826 456 1203 501"><b>John Shaw Building Services</b></p> <p data-bbox="941 501 1085 524">Based in Ewhurst</p> <p data-bbox="820 560 1212 645"><b>A reliable, friendly and trustworthy local service offering well priced, good quality internal and external renovation.</b></p> <div data-bbox="820 658 1209 739">  </div> <p data-bbox="941 748 1085 770">Services include:</p> <p data-bbox="820 779 1212 878">Painting and decorating • Tiling and flooring Furniture design and build • General carpentry Bathroom and kitchen installations Garden maintenance • Patios and decking</p> <div data-bbox="820 891 1209 972">  </div> <p data-bbox="820 1008 1203 1043"><b>Contact John - 07816 266941</b></p> <p data-bbox="890 1052 1139 1097">john@johnshawservices.co.uk www.johnshawservices.co.uk</p>
---	--



**The Bulls Head**

Village pub & dining  
The Street Ewhurst GU6 7QD  
Phone 01483 277447

Email: [info@thebullsheadhotel.com](mailto:info@thebullsheadhotel.com)

Website: [www.thebullsheadhotel.com](http://www.thebullsheadhotel.com)

Like us on Facebook: [www.facebook.com/pages/Bulls-Head-Pub](http://www.facebook.com/pages/Bulls-Head-Pub)

Bed & Breakfast Accommodation

En-suite Rooms available

Wednesday 28th May 'Dinner & a Movie'

'Mandela A Long Walk to Freedom

Starts 7.45pm, £12.00

pre booking required for this event

Monday 2nd June Quiz Night starts 8pm

Wednesday 18th June 'Dinner & a Movie'

'The Railway Man'

Starts 7.45pm, £12.00

pre booking required for this event

## nEWs and viEWs from the churches in Ewhurst

---

### John Shaw Building Services – Editorial

Based in Ewhurst and working extensively across Surrey and the home counties, John Shaw Building Services is a local company offering an honest, reliable and customer focused approach to any internal or external renovation.

With over 12 years experience in building and renovations, we have a wealth of practical skills and knowledge. Our approach to any job is to clearly identify your requirements and to provide you with tailored advice and a first-class service. We will ensure the whole process is smooth from start to finish and the task is completed to the highest standard. Our reputation relies upon it.

Jobs include:

- Bespoke carpentry - fitted wardrobes, cabinets, shelving units etc
- Tiling
- Bathroom and kitchen installation
- Painting and decorating
- Gardening - including landscaping, decking and general garden maintenance
- Furniture renovation
- Handyman – various small jobs around the home

Following a free initial consultation, we will send you a no obligation quote. With a vast knowledge of local suppliers, we ensure a cost effective price. No job is too small.

Great pride is taken in the fact that the majority of our work is through word of mouth and personal recommendation.

Here's what one happy customer said about us:

*"I can't recommend John highly enough. Whether painting, decorating, making furniture or building, John takes real pride in his work which is always to an excellent standard no matter how small the job. He is without doubt trustworthy and reliable and it is always a pleasure to have him helping us out."*

If you have any jobs you would like us to quote for, please get in touch. We would be happy to help.

**John Shaw Services, Tel: 07816 266941    [www.johnshawservices.co.uk](http://www.johnshawservices.co.uk)**

Calling all Ewhurst Artists and Crafters  
There is to be an Art and Craft Exhibition at  
Ewhurst Baptist Church  
The weekend of 11<sup>th</sup> October 2014  
Interested? Want to exhibit?  
Please contact Cherry Matthews  
01483 277895 or [matthewscherry@aol.com](mailto:matthewscherry@aol.com)

nEWs and viEWs from the churches in Ewhurst



**Rainbow's End Pre-School would like to invite you all to our summer fund raiser:**

This year we are hosting a

**Disco through the Decades!**

Come join us at the Village Hall for a great party night and re-live your youth.

**Saturday 7 June 2014 7.30pm - 11.30pm  
Ewhurst Village Hall**

Free Cocktail to those in Fancy Dress - a prize for the best outfit.

Summer Cocktails, fizz, wine, beer, cider/lager, soft drinks available from the bar on the night.

Tickets cost £10 per person; please buy in advance.

For tickets or further information please email:

[rainbowsendpreschool@gmail.com](mailto:rainbowsendpreschool@gmail.com) or ring Jayne on **01483 808488**.

Rainbow's End Pre-School is a thriving pre-school based in Ewhurst providing early years education for 2-4 year olds.

It is run by a voluntary committee and is also a registered charity (Charity No: 298620).

**CELEBRATE THE START OF SUMMER:**

**EWHRST SECRET GARDENS** are revealing themselves again over the weekend of 14-15th June 2 -6pm.

This year's gardens are spectacular, both large and small, with fabulous views, scrumptious teas and beautiful plants for sale. The Secret Garden Tour has become very well know with garden lovers travelling from across the county to visit each year. More than 80 gardens have opened their gates over the years raising nearly £40,000 for village charities. Come and savour the beauty to be found hidden in Ewhurst and receive a warm welcome as well as a wonderful experience.

Tickets £6.50 £5.50 OAPs with 50p off if purchase before the weekend. On sale at Hazelbank Stores and at each garden over the weekend. We look forward to seeing you and your families.



### Pre-School News

Now in the summer term at Rainbow's End, the children love our garden area more than ever. Watching plants grow before their eyes is always a great opportunity for learning and we've squeezed all sorts in to our pots this year.

The children have taken part in a bean plant competition, with some growing as "high as the sky" according to one child. The daffodil bulbs the children planted came to life out the front of the village hall, which brightened up our entrance and was hopefully enjoyed by passers by as well. In the garden we now have sunflower seedlings as well as a tray of sweet peas peeping out on the windowsill. Coming back to see if they've grown some more each day, the children really benefit from taking ownership of these living things and they tick all sorts of boxes for developing their understanding of change over time, measuring, new vocabulary and more.

In other news we are very pleased with money raised from our recent sponsored slide. All the children at Rainbow's took part demonstrating their most daring slide manoeuvres. For example 'the superman' slide was very popular this year as well as the stately backward slide. We managed to raise well over our target reaching £538 and have purchased some resources for our outdoor reading area.

Highlights to look forward to this term include our woodland themed sports day and annual family outing this year to Wisley Gardens.

Spaces for September and 2015 are quickly filling up so any parents who are starting to think about starting Early Years Education do come and look round as soon possible. We look forward to meeting you.

[www.rainbowsendpre-school.org.uk](http://www.rainbowsendpre-school.org.uk) Hall: 01483 278378  
[rainbowsendpreschool@gmail.com](mailto:rainbowsendpreschool@gmail.com) Office: 01483 808488

Hall: 01483 278378



## Bullimores

### Chartered Accountants

Your Local, Friendly & Efficient Business Advisers

- Inheritance Tax & Executorship
  - Financial & Tax Planning
- Accounting • Audit • Taxation
- Business Start-ups • Payroll
- IT Accountancy Services

Whether your needs are business or private,  
please contact us for a free, no obligation, consultation  
on 01306 880880 or email: [partners@bullimores.co.uk](mailto:partners@bullimores.co.uk)

Old Printers Yard, 156 South Street, Dorking, Surrey, RH4 2HF  
[www.bullimores.co.uk](http://www.bullimores.co.uk)

### **MJDH** **PAINTING & DECORATING**



**Marius Henderson**

*"A brush with the best!"*



Please phone or write  
to arrange a free estimate:

Mobile: 078 129 568 51

Home: 01483 274162

14 Dukes Close, Cranleigh, GU6 7JU

Email:

[mariushenderson@hotmail.com](mailto:mariushenderson@hotmail.com)

### **Septic Tank Problems?**

If so, have you considered  
converting your existing tank  
to a sewage treatment plant  
at a fraction of the cost of a  
new plant?

Also:

- Drains unblocked
- CCTV surveys of drains  
and Drain repairs

**Charles Humphrey and Son**

**Drainage Engineers**

**Farnhurst, Alfold.**

Office: 01483 277777

Mobile: 07958 924616



### **News from Ewhurst CE Infant School**

The summer term is well underway, and the lovely spring weather is very welcome. The swimming pool is looking very inviting and will be ready for the children to use in early June. We are extremely grateful to the parish council for their generous donation in support of the pool. The Jubilee Garden continues to be a wonderful learning environment for the children - the small woodland is used to make dens, set trails and create woodland art, and the pond hosts a range of wildlife and is always the final home to the many froglets nurtured in the classrooms. The Jubilee Garden is also used for the Apple Class Forest Schools sessions, which promotes learning by exploring the natural world, and allowing children to assess and take manageable risks in a natural environment, while learning how to keep themselves safe. Holly and Cherry class visit Sayers Croft for their Forest Schools sessions – we are very lucky to have such a valuable resource on our doorstep.

We have a lot to look forward to this term – during Feeling Good week we are holding a repeat of the pet service which was such a success last year, which highlights the impact that animals may have on our well-being; we have a whole school trip to Sayers Croft; and in July we are taking part in the Commonwealth Games at St Catherine's School, Bramley, following the success of our Olympic Games in 2012.

We will also be busy with the induction visits for children who are starting with us in Apple Class in September. These visits are always very enjoyable and are an essential part of the settling-in process. The current Apple class pupils always look forward to looking after the children and showing them around the school.

The Summer Fair this year is being held on Saturday 21<sup>st</sup> June from 11.30am until 2.00pm. This traditional Fair has many favourite activities including Maypole dancing and a range of stalls. Each year the PTA raises a significant amount of money to provide a range of wonderful resources for the children for which we are truly grateful, so please do put the date in your diary and support this village event.

For prospective parents Opening Morning tours will be scheduled for the autumn term, but families are always welcome to contact the school office (01483 277291) to arrange an individual visit. The school website contains a wealth of information about the school and provides prospective parents with a flavour of our outstanding provision and some of the special activities undertaken by the children. Do have a look at [www.ewhurst@surrey.sch.uk](http://www.ewhurst@surrey.sch.uk).

Jane Dyer Headteacher

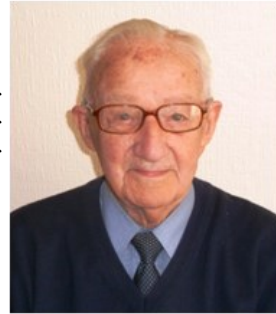
**nEWs and viEWs from the churches in Ewhurst**

<h2>EWHRST VILLAGE CLUB</h2> <p>POOL TABLE, BINGO, DARTS, MUSIC NIGHTS, WII GAMES, SNOOKER ROOM,</p> <p>LICENSED SOCIAL CLUB</p> <p>NEW MEMBERS WELCOME</p> <p>FAMILY FRIENDLY</p> <p>1A DOKLEY ROAD 01483 277300</p>	<h3>JENNIFER MARGRAVE SOLICITORS LLP</h3> <p>Wills, Trusts &amp; Probate Lasting Powers of Attorneys Court of Protection matters NHS funding issues</p> <p>Office hours: Monday to Friday 9am-5.30pm</p> <p>The Old Post Office, 130 Epsom Road, Guildford, GU1 2PX</p> <p><b>Tel: 01483 562722</b> <b>Fax: 01483 604222</b></p> <p>E: <a href="mailto:enquiries@jennifermargrave.co.uk">enquiries@jennifermargrave.co.uk</a> We advise on law but do much, much more!</p> <p><a href="http://www.jennifermargrave.co.uk">www.jennifermargrave.co.uk</a> Authorised and regulated by the Solicitors Regulation Authority SRA No. 533213</p>
---	---

	<h2>HOUSE CLEARANCE</h2>	
<p>ALSO SINGLE ITEMS PURCHASED</p> <p>FOR A FRIENDLY AND CONFIDENTIAL SERVICE</p> <p>CONTACT</p> <p><b>CRANLEIGH ANTIQUES</b></p> <p><b>TEL: 01483 277318</b></p> <p><b>PROMPT AND RELIABLE SERVICE</b></p> <p>PROBATE VALUATIONS UNDERTAKEN</p>		

**In Our Midst ~ Bob Warrington  
Manager, sportsman and gardener extraordinaire**

There was a time in Ewhurst when it was likely that you lived next door to, or at least near, someone from the extended Warrington family. Bob's grandmother Warrington was a Tickner, another large Ewhurst family, and she had thirteen children herself, many of whom married and stayed in Ewhurst with families of their own. At one time three generations of Warrington men were playing in the Ewhurst cricket teams at the same time - Bob himself, his father and his grandfather.



The family moved to Coneyhurst Lane from Ewhurst Green soon after Bob was born. A beautiful position but a long way for young people to walk to the village school and back every day - and three times a day for church on Sundays. Bob joined his sister in the church choir but remembers that he was soon told not to sing, so taking the hint, he started bell-ringing instead. Although he never rang a full peal himself, he did ring with some of those who are still commemorated in church for doing so to this day.

His father was a bricklayer and his mother insisted that young Bob did not follow him into the building trade. And so it was he joined the Co-op in Cranleigh to begin a forty eight year career, broken only by his wartime service. The shop was on the left corner of Knowle Lane with the post office opposite as in those days, Knowle Lane was simply the drive to Knowle Park Estate and these buildings were the original lodge houses. As an apprentice he cycled to work from Coneyhurst and spent the day cycling around to customers in the area taking their orders. The houses and farms in Forest Green, Shamley Green, up Barhatch Lane to Alderbrook and the Hurtwood were his weekly patch. Short cuts could be taken on the bike, over styles and across the fields and from Alderbrook he would use the tracks to come home for lunch and back to Cranleigh in the afternoon. All this with the customers' money unprotected on his bike. Not something you could do safely today.

In 1940, after 3 years with the Co-op, Bob travelled to Reading and volunteered for the RAF. Drill and basic training were completed in Blackpool and from there he joined a gunnery unit at Wittering near Stamford, Lincolnshire. They were charged with defending the aerodrome with ground-to-air canons and in his words, it was a luxury - the barracks were "home-from-home". At the end of the operation there, he successfully applied for a place on a gunnery instructor's course and after training in the Isle of Man, he travelled around the country training men in the servicing and firing of Browning and Hispano

Cont'd

nEWs and viEWs from the churches in Ewhurst

<p><i>SURREY RESTORATION</i></p>  <p>Specialists in high quality restoration of antique furniture, objets d'art and period house restoration. Estimates are free. Commissions also undertaken</p> <p>Please contact us at our workshop on 01932 868883 or our mobile 07711 635484</p>	 <p><b>MANN S</b> CRANLEIGH · SURREY SINCE 1887</p> <p>Cookware . Linens . Fashion . Toys . Home Furniture . Beds . Flooring . Curtains</p> <p>01483 273777 www.mannsofcranleigh.co.uk</p> <p>OPEN Monday to Saturday 8.30am - 5.15pm Sundays 10am - 4pm</p>
<p><b>Tree Surgery ~ Hedge Cutting ~ Garden Maintenance</b> <b>All types of fencing supplied &amp; erected, Logs for Sale</b> <b>Stump Removal ~ Groundwork ~ Landscaping</b></p> <p><b>G. B.</b> <b>FENCING &amp; TREE SURGERY</b> <b>SPECIALISTS</b> Tel: 01403 824048 Mobile: 07714 689824</p> <p><b>GUILD OF MASTER CRAFTSMEN</b> <i>Free Estimates • Fully Insured</i> <b>Checkatrade</b></p>	
<p><b>G.B. STOVE INSTALLATIONS</b></p> <p>Installation of all wood burning appliances Installation of twin walled flexible flue liners Service and Maintenance</p> <p>Logs for Sale 01403 824048 07714 689824</p>  	

## **nEWs and viEWs from the churches in Ewhurst**

---

Cont'd

ground-to-air machine guns. It was one of the best decisions he has ever made he says as he enjoyed the work and more seriously, many of his former colleagues were sent abroad and had to face action on the front lines. He travelled to places as far apart as Bristol to Fraserborough in the north of Scotland but finally came to Watchfield near Swindon where, in a hanger at a New Year's Eve dance, he met future wife Vera - his wartime souvenir! A local girl employed on the airfield, she remembers Bob spending much of his time inside a beehive-like structure where a Browning gun was mounted centrally and used to fire at images projected all around the ceiling. Sergeant Warrington was chief instructor for this training.

Demobbed in 1945 he returned to Ewhurst and within two weeks was back at the Co-op. Promotion came when he was made manager of a travelling shop from Guildford. Using a converted ex-army ambulance, Bob had a regular round in the Bushey Hill Estate, Merrow. It was a long, hard day, cycling first to Cranleigh then on to Guildford to pick up the van before driving on the round all day. The van would regularly break down and another vehicle would be brought to tow him to finish the day before taking him back for repair. Customers could not be let down. These efforts eventually paid off when he was successful in his application to become manager of the Cranleigh branch where he remained until his retirement in 1983 after a further twenty years. In this position Bob is still fondly remembered by many people not least for his ability for knowing by heart the Co-op membership numbers of every one his customers.

Bob and Vera were married in 1948 and moved to a flat in Downhurst Road. These were happy times, bringing up their three boys and taking part in sport and community activities. Bob helped start the Ewhurst branch of the British Legion which met in the old YMCA building, now the village club. He played snooker there with Vera making the sandwiches, played cricket and golf and taught tennis to young people in Cranleigh and was good enough to win the doubles competition at the Cranleigh Tennis Tournament three times with his bank manager partner. But his garden was his passion. Over the years he has won several cups for best roadside garden and he has photos showing the beautiful borders and perfect lawns in his garden on the corner of Downhurst Road. It was not without its problems he says. Occasionally cars would miss the corner and come hurtling through the fence and ruining the many hours of hard work. As recently as 2008 Bob was asked to send his hanging baskets to the Royal Pavilion at Brighton to celebrate the jubilee. In 2008 they celebrated their diamond wedding anniversary with the whole family. A card was received from the Queen and Vera still proudly brings it out on special occasions. We've been a good partnership she says. I quite agree.

*Geoff Harry*

**LOCAL HISTORY CORNER by Janet Balchin**

**Ewhurst in the Great War**

August 2014 will mark the 100th anniversary of the outbreak of the First World War.

I am researching what happened in Ewhurst during those momentous years and how it affected local people. I am planning to report events chronologically in the form of monthly 'Bulletins' which will be posted on the new Ewhurst History Society website.\*

To many the war must seem like ancient history now, but it is not so long ago since the last veteran died\* but many will remember their parents or grandparents living through it, although many veterans did not talk about it. Our perceptions of the war change as 'fashions' in the teaching of history changes, but by going back to the original source material we can see how people saw it at the time. Local newspapers, school log books and parish magazines are all useful sources.

The lives of the men of Ewhurst who fell in the war have already been researched and their stories told on the excellent web site [www.ewhurstfallen.co.uk](http://www.ewhurstfallen.co.uk) and I shall, with Andy Bailey's permission, be drawing on this material, but I also want to show how the war affected those on the home front and how it affected everyday life in Ewhurst.

I would love to hear from anyone who may have family memories of Ewhurst from this time and be particularly interested if anyone has any photographs. Did you have a relative who fought in the war, or was a VAD? Did your ancestors farm in Ewhurst, or run a shop or business during the First World War? Has anyone got any old Parish Magazines or any other form of documentation? Many thousands of letters were written during this period, the Surrey Advertiser sometimes quoted from letters from the Front, but have any survived? Over the next four years many villages and communities will be holding exhibitions and publishing commemorative books. If we can collect enough information we could do something for Ewhurst too.

\*The History Society web site is currently being rebuilt and it is hoped to launch it in August.

\*I am privileged to have met one of the last surviving veterans - Albert "Smiler" Marshall who died in 2005 aged 108. He worked into his nineties as gardener to a lady in Ashtead.

Janet Balchin, Chairman, Ewhurst History Society  
Tel 277342, e-mail – [ewhursthistory@btinternet.com](mailto:ewhursthistory@btinternet.com)

### **Ewhurst Church and NADFAS**

The Cranleigh branch of the National Association of Decorative and Fine Arts Societies (NADFAS) have completed a full inventory and record of all the church artefacts belonging to St Peter and St Paul Ewhurst. Where possible, the person or organisation donating an item is noted as well. A bound copy of the Inventory and Record was presented to the Church by Jonathan Cross, the deputy chairman, at the Annual Church Parochial Meeting in April 2014.

The inventory has full descriptions of all the church items, including the windows and needlework, with a full photographic record. This Inventory and Record reflects the work, done over fourteen years, of a number of people from the village, the church and NADFAS. Our thanks especially go to Norman and Janet Price who were the catalysts in bringing this work to fruition.

The Inventory and Record is kept by the church and is available to interested members of the public on prior request to either the Rector or the Church wardens.

The Inventory and Record will be on public view on the Church Patronal Sunday and as a part of special displays.

Additional copies of the Inventory and Record are kept by:

NADFAS House  
Church House, London  
Ewhurst History Society  
Guildford Diocese  
Surrey History Centre  
The English Heritage Archive  
V & A Museum Art Library, London

For further information about NADFAS, contact:

NADFAS House  
8 Guildford Street  
London WC1N 1DA

[www.nadfas.org.uk](http://www.nadfas.org.uk)

NADFAS Cranleigh branch is at  
[www.cranleighdefas.org](http://www.cranleighdefas.org)



## We have moved!

Come and visit us at our new showroom. Only seven miles away at Broadbridge Heath.

Remember we offer **FREE** car pick up and return for servicing and MOTs on all makes and models of cars...



**SKODA**

Station Garage

Since 1973



 0843 320 1719 (Local rate)  [www.horshamskoda.co.uk](http://www.horshamskoda.co.uk)

 [www.facebook.com/stationgarages](https://www.facebook.com/stationgarages)  @StationGarage

78 Billingshurst Road, Broadbridge Heath, Horsham, RH12 3LP



**Handmade Bespoke Joinery**  
Specialising in; Windows, Doors, Wardrobes,  
Bookcases, Radiator Covers and Window Seats



[www.wildwoodjoinery.co.uk](http://www.wildwoodjoinery.co.uk)  
T: 01483 202143 M: 07506 699887 E: [wildwoodjoinery@gmail.com](mailto:wildwoodjoinery@gmail.com)  
Unit 2 Burrows Lea Farm, Hook Lane, Shere, Guildford GU5 9QQ



## **nEWs and viEWs from the churches in Ewhurst**

---

### **EWHURST EVENING WI**

In February we had a most unusual and enthusiastic talk from Mr Colin Reed on a Humorous Look at 19th Century Medicine and in March Derrick Fulford gave us an interesting talk on Antique Clocks and Watches. In April we held our Open Evening and were delighted to welcome the guests who came along. We certainly hope they enjoyed the evening and will join us at future meetings. Our speaker that night was Anne Chance OBE on being a Petticoat Pilot. Anne told us of many funny incidents during her flying lessons as well as giving us an insight into the exams and flying hours needed to obtain her Private Pilot's Licence.

Ewhurst WI is a social group of ladies and our meetings are held in Ewhurst Village Hall on the second Thursday of the month at 8pm. We aim to make our evenings entertaining and informative, with a wide range of speakers, but also leave time for refreshments and social chat. Our activities are not confined to the monthly meetings. We arrange monthly lunches at various venues, walks and visits etc. In April many of our members enjoyed a visit to the Yvonne Arnaud Theatre to see Agatha Christie's Black Coffee.

In May we will be holding our Resolution Meeting and in June Audrey Olley will be coming along to give us a talk on Snow Monkeys and Cranes of Japan. In July Pat Coxon will be giving us a talk and demonstration on flower arranging.

For more details please ring Lyn Southgate on 01483 548966.  
We look forward to seeing you.

### **EWHURST MONDAY CLUB**

We meet at the Glebe Centre, Ewhurst on the third Monday of the month at 2.00pm for a 2.15pm start.

Monday

June 16th Trip on the Wey and Arun Canal with a Cream Tea

Monday

July 21st Trekking along the South Downs Way—Jill Leslie

No Meeting in August

President / Treasurer: Jean Dodd 278184

Outings and Programme Organiser: Jean Sandow 273345

Subscriptions £3 per year. Tea and Cakes / Scones £1

Visitors £1 Come and bring your Friends

nEWs and viEWs from the churches in Ewhurst

RAINFALL			
Quoted in millimeters ( 1 inch = 25.4 mm )			
	February	March	April
	204.2	34.7	97.3
Temperature degrees centigrade			
<b>Maximum</b>	13.7	20.8	21.3
<b>Minimum</b>	- 1.1	- 2.6	1.1



Surrey  
Hills  
PC

Your local & affordable service  
for home and business

Laptop, Desktop, Mobile and Tablet  
PC & Apple

- ❖ Performance improvement
- ❖ Virus removal
- ❖ Network & Broadband
- ❖ Hardware & LCD repairs
- ❖ Affordable websites
- ❖ Purchase advice

No VAT  
No fix = no Fee

Established 2008

01306 400121

[david@surreyhillspc.co.uk](mailto:david@surreyhillspc.co.uk)

DM HANDYMAN  
SERVICES

FOR ALL YOUR  
MAINTENANCE NEEDS

Landscaping • Fencing  
Kitchens • Carpentry • Plumbing  
Painting and Decorating

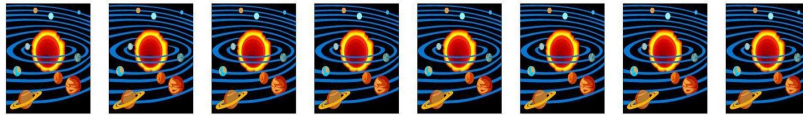
General household  
maintenance indoors  
and out

01403 823687

07795 097102



Membership no. A111556



**Wednesday 25<sup>th</sup> June, 2014**  
**18.30 for a 19.00 start**

"The silver apples of the moon, The golden apples of the sun"\*  
An evening of Sun & Moon poetry  
**Mullard Space Science Laboratory**  
Holmbury St Mary, Dorking RH5 6NT

The Mullard Space Science Laboratory invites you to an evening of poetry dedicated to the Sun and the Moon.

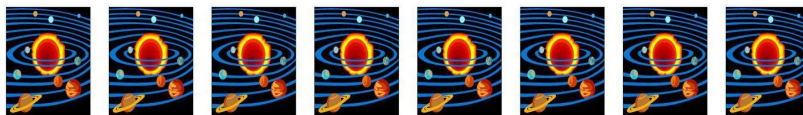
The evening will be hosted by MSSL's poet in residence, Simon Barraclough. Simon has published three poetry collections; Los Alamos Mon Amour, Bonjour Tetris and Neptune Blue, and is working on a new book called Sunspots.

Moon poems will be read by special guest poet, Liane Strauss, Head of Poetry in Creative Writing at Birkbeck College. There may also be readings of new work by members of MSSL staff.

Refreshments will be available from 18.30. There will be a chance to chat and mingle at the end of the evening.

All welcome. Entry is free but **MUST** be pre-booked by emailing:  
Libby Daghorn ([l.daghorn@ucl.ac.uk](mailto:l.daghorn@ucl.ac.uk))

\*Title is from 'The Song of Wandering Aengus' by W.B. Yeats



### **Surrey Hills Summer Family Concert**

Every summer the Surrey Hills Singing School brings together the Training Choir, Young Voices and Singers (mum's choir) for an entertaining evening of song. This unusual combination of choirs is very popular with the local audience and particularly appropriate for families due to the earlier start time for the youngest performers. The programme will comprise all styles of music including Taylor Swift, Disney classics, musical numbers My Favourite Things, Hey Look me over and Don't rain on my parade, the song cycle "This Day", by the contemporary composer Bob Chilcott, and spirituals "I got a robe" and "Who will be a witness". With the mix of high quality and communicative performances from the Singers and engaging singing from the children this concert will appeal to everyone. The Surrey Hills choirs have built a reputation for excellent performances, so please do join us. The Surrey Hills Family concert will be held on Saturday 14<sup>th</sup> June at 6.30pm at Cranleigh Village Hall. Tickets are £8 for adults and £4 for children and includes refreshments.

If your children are interested in singing pop, gospel and musical songs



then do join us in September for some free taster sessions. We also learn musicianship skills and vocal technique. The Training choir rehearse Mondays at 3.50pm and the Young Voices on Mondays at 4.30pm. Both choirs rehearse at Cranleigh C of E Primary School. The Surrey Hills Singers is a non-auditioned ladies choir who sing all styles of music and rehearse on a Monday morning from 10am – 12 noon at Ewhurst Baptist Church. The choir was originally set up to meet the demand of young mums who are unable to commit to an evening choir, but has grown to include singers of various professions and ages. We welcome singers to try our taster sessions in September.

A note for your diary: The Surrey Hills Chamber Choir will be joining forces with the Waverley Ensemble for their summer concert on Saturday 12<sup>th</sup> July at St Nicolas Church, Bury Street, Guildford at 7.30pm. Tickets for both concerts will be available to purchase from the choir website at [www.surreyhills-choirs.co.uk](http://www.surreyhills-choirs.co.uk) or call Debbie on 01483 276281.

## nEWs and viEWs from the churches in Ewhurst

---

### **News from Ewhurst Players in their 40<sup>th</sup> Anniversary Year**

We have been delighted to receive so many compliments from those who came to see "Three Class Acts" in May and, as always, we are indebted to our audiences who give us such wonderful support. The evening echoed the format of our first production in April 1974 with three short plays and timely interludes for the eating of nibbles and a two course supper served at tables. Our 40<sup>th</sup> Anniversary celebrations continue with a reading of "Time of My Life" by Alan Ayckbourn which we first performed in 1996. The weekend of July 12<sup>th</sup>/13<sup>th</sup> will give our members the opportunity to share in the fun of the Ewhurst Carnival on the Saturday and meet up for a celebratory lunch in the Marquee on the Sunday. For our November production we have chosen to stage a re-run of our first full length play from 1974 "The Happiest Days of Your Life" by John Dighton. The Play was first produced in London in 1948 and was subsequently turned into a memorable film starring Margaret Rutherford and Alastair Sim. Our production will be directed by the original Director Michael Fanya who, after that production, wrote "The fact that so many people gave willingly of their time and energies, indicates the enthusiasm we have in the Players and augers well for the future". We think that he has been proved right and we hope to be able to continue to entertain for many more years and to continue to give support to our community.

You are welcome to join us at the following:-

Play reading at "Springfold" at 7.30 on June 11<sup>th</sup>. Contact Jeannie on 01483 277648

"The Happiest Days of Your Life" at 7.45 in the Village Hall on November 19<sup>th</sup>-22<sup>nd</sup>.

Auditions for this production at 7.30 in the Village Hall on June 19<sup>th</sup> and 21<sup>st</sup>. Contact Mike on 01483 277252.

Contact our Secretary ([secretary@ewhurstplayers.com](mailto:secretary@ewhurstplayers.com) 01483 277034) for details of how you can get involved with our exciting and friendly group.

### **Cranleigh Choral Society's Summer Concert Saturday 28<sup>th</sup> June.**

**in the Cranleigh Village Hall at 7.30pm.**

The programme features the well-loved Faure's *Requiem* as well as two pieces by Vivaldi, *Beatus Vir* and *Magnificat*. Tickets £12 from 07973 772812, choir members or on the door.

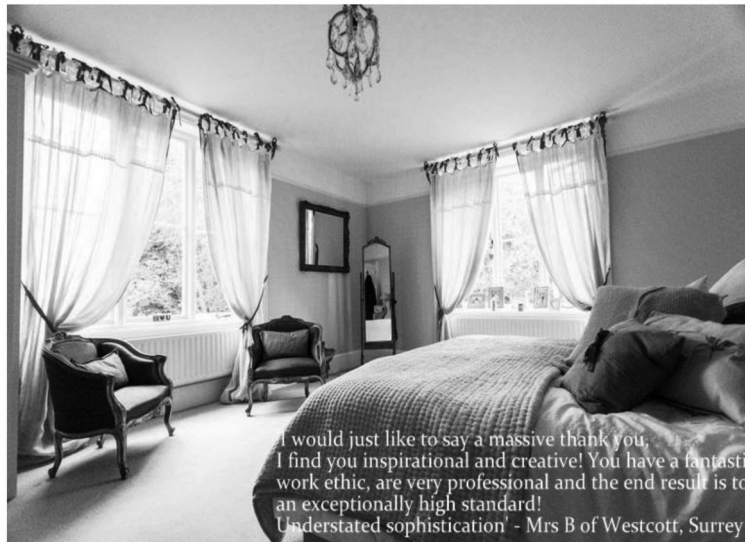
Visit our website: [cranleighchoralsociety.org.uk](http://cranleighchoralsociety.org.uk)

# TAILOR~MADE curtains & blinds

Bespoke curtains, Roman blinds, soft furnishings, fabrics, poles, tracks & pelmets plus made to measure blinds based in Ewhurst.

Free advice, measuring, quotes & temporary blinds provided during make up.

Full Installation service available, plus personal wedding list service & gift vouchers.



I would just like to say a massive thank you,  
I find you inspirational and creative! You have a fantastic  
work ethic, are very professional and the end result is to  
an exceptionally high standard!  
Understated sophistication' - Mrs B of Westcott, Surrey

[WWW.TAILOR-MADEHOME.CO.UK](http://WWW.TAILOR-MADEHOME.CO.UK)

Ewhurst 389614    [christina@tailor-madehome.co.uk](mailto:christina@tailor-madehome.co.uk)

## nEWs and viEWs from the churches in Ewhurst

### Final Note from the Editor:

I am happy to publish news of all the summer events happening in and around Ewhurst. Let us hope the weather is kind, the sun shines on our endeavours and we have a great summer.

I am happy to receive articles and information to publish in nEWs and viEWs, so if you have any items of interest please either e-mail them to me at:

avery265@btinternet.com or put into the mail box at the back of the Parish Church by August 4th.

We hope you will support all our local advertisers. If you wish to place an advertisement, please contact Val Henry on 01483 275380 or val.henry@mgownersclub.net.

Jackie Avery  
01483 268694

 <p><b>dance a ramix</b> Peaslake Fitness Studio &amp; Dancing School</p> <p>BALLET / MODERN JAZZ FREESTYLE / THEATRECRAFT</p> <p>ADULTS' FUNKY DANCE CLASSES</p> <p>STEP / 50+ / BODY CONDITIONING POWER WALKING / PERSONAL TRAINING</p> <p>BIRTHDAY DANCE PARTIES ages 7 upwards</p> <p>PERSONAL DANCE LESSONS</p> <p>for further information call Avril <b>01306 731182 / 07899 842727</b> e: dancearamix@btinternet.com</p>	<p><b>1<sup>st</sup> Revisualize 15%</b> Visit Off</p> <p><b><u>Skin Care, Beauty &amp; Holistic</u></b> <b><u>Treats</u></b></p> <ul style="list-style-type: none"> <li>• Facials</li> <li>• Wedding make up</li> <li>• Reflexology</li> <li>• Tinting</li> <li>• Threading</li> <li>• Satin Hand Treatment</li> <li>• Thai face massage</li> <li>• Make up lessons</li> <li>• Gift vouchers</li> <li>• Indian head massage</li> </ul> <p><small>More treatment available ask for price list</small></p> <p><b><u>Sashi Verrall:</u></b> <b>Tel: 01403 822504 / 07761158436</b> <b>Website: <a href="http://www.revisualize.co.uk">www.revisualize.co.uk</a></b></p>
--	---



*Cranleigh  
Funeral Services*

P. BENNETT *Dip FD M.B.I.F.D.*

**IMMEDIATE ATTENTION  
24 HOURS A DAY**

---

**TEL: CRANLEIGH 01483 275758**

---

**FUNERAL DIRECTOR  
P. BENNETT Dip FD.**

**The Caring  
Family Owned Business**

**Sussex House Funeral Home,  
Ewhurst Road,  
Cranleigh**

**MONUMENTAL MASONS**



**nEWs and viEWs from the churches in Ewhurst**

---

**St Peter & St Paul's Church Contact Numbers**

www.saintpeterandsaintpaul whurst.org.uk		PCC Secretary Joanna Cadman	268627
Rector		Sidesman's Guild	
Rev David Minns dlkminns@talktalk.net		Anne Barrett-Lennard	277075
Church Office		Bell Ringers Guild	
ewhurstchurch@yahoo.co.uk	277584	Jan Jesson	276655
Associate Ministers		Flower Guild	
Rev Tricia Hislop	274359	Rosemary Stewart	272814
Rev Dr Tim Seller	01306 627548	Readers Guild	
Lay Minister		Jane Harry	275047
John White	277663	Women's Fellowship	
Church Wardens		Julia Stearnes	271419
Jane Harry	275047	Sunday Service Coffee	
Colin Stewart	272814	Rota	
Deanery Synod		Pam Childs	277511
Liz Tingley	277471	Parish Magazine:	
Janet Templeman	548419	avery265@btinternet. com	
PCC Treasurer		Editor, Jackie Avery	268694
Michelle Matthews	267790	Distribution	
Director of Music		Fiona & John	
Val Henry	275380	Morrison	273522
Treasure Seekers		Advertising	
Jo Moore	277278	Val Henry	275380
Parish Secretary			
Geoff Harry	275047		

**Ewhurst Baptist Church Contact Numbers**

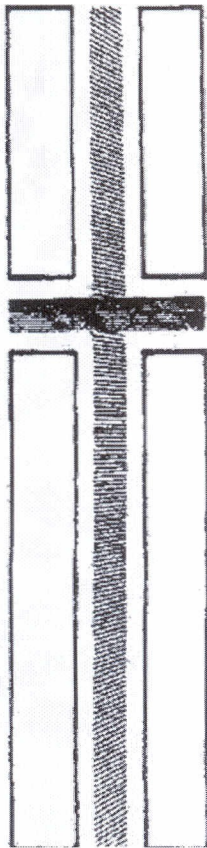
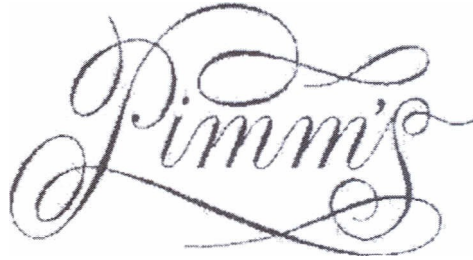
<b>Minister:</b>			
Rev. Simon Bodington			495426
		<a href="mailto:minister@ewhurstbaptistchurch.org.uk">minister@ewhurstbaptistchurch.org.uk</a>	
<b>Deacons:</b>			
Mrs Brenda Buchanan			351127
Mrs Cherry Matthews			277895
Mr Colin Crick	Room Hire		273125
Mrs Glesni Pratt	Treasurer		273844
Ms Marian Copus	Worship		267014
<b>Church Office:</b>			267878
Jackie Bodington	Mothers & Toddlers Group		495426
Hazel Jones	KIKS Club		267878
<b>Web Site:</b>		<a href="http://www.ewhurstbaptistchurch.org.uk">www.ewhurstbaptistchurch.org.uk</a>	

## nEWs and viEWs from the churches in Ewhurst

---

### USEFUL NUMBERS

: Ewhurst C of E Infant School (Head Teacher Mrs Dyer)	277291
: Cranleigh C of E Primary School	273286
: Glebelands Secondary School	542400
: Rainbows End Playgroup	07821 010918
: Sayers Croft Field Centre (Mr D Quoroll)	275541
: Cranleigh Health Centre (24 hour service)	782478
: SW Surrey Mobile Physiotherapy Service (Linda Haynes)	01306 730074
: Waverley Borough Council	523333
: Waverley Borough Council (locality office)	267654
: Ewhurst Parish Council (Jane Bromley)	267646
: Police Station (24 hours)	08451 252222
: Report Criminal Damage	571212
: Cranleigh Library	272413
: Citizens Advice Bureau, Village Way, Cranleigh	273378
: Cranleigh Arts Centre	278001
: Cranleigh U3A (Mr Keith Atkins)	267040
: The Old Rectory (Mr C Geoghegan)	267195
: Ewcare	277606
: The Glebe Centre—book via WBC Tracy Randle	523171
: Ewhurst Village Society (Mrs S Handley)	277458
: Ewhurst Village Club (Wendy Chapman)	277300
: Ewhurst Village Hall Bookings (Wendy Bollon)	01403 252954
: Ellen's Green Memorial Hall, Katy Rapley,	01403 823460
: Waverley Borough Council	<a href="http://www.waverley.gov.uk">www.waverley.gov.uk</a>
: Ewhurst Parish Council	<a href="http://www.ewhurst.org.uk">www.ewhurst.org.uk</a>
: Cranleigh Health Centre	<a href="http://www.cranleigh.gpsurgery.net">www.cranleigh.gpsurgery.net</a>
: Cranleigh Arts Centre	<a href="http://www.cranleighbartscentre.org">www.cranleighbartscentre.org</a>
: Ewhurst/Cranleigh Police	<a href="http://www.surrey.police.uk/neighbourhood/neighbourhood.asp?area=WVCE">www.surrey.police.uk/neighbourhood/ neighbourhood.asp?area=WVCE</a>



**FUNERAL SERVICES**  
**CO-OPERATIVE GROUP**  
**FUNERAL DIRECTORS**  
**&**  
**MEMORIAL CRAFTSMEN**

**DORSET HOUSE,  
HIGH STREET,  
CRANLEIGH 274079**

**PRIVATE CHAPELS OF REST**

**MARY ROAD, GUILDFORD  
567394**

**Immediate helpful attention night or day**

**nEWs and viEWs** *from the churches in Ewhurst*

---