

nEWs and viEWs

from the Churches in Ewhurst

Issue 56 Summer 2016





Cedar Court
care home

sharing minds and hearts



Luxury brand new suites now open

The much-anticipated Alexandra Suites at Cedar Court Care Home, Cranleigh are now open. This collection of just 16 brand new luxury suites boast superb accommodation and combined with award winning care services offer elderly residents the perfect home from home environment.

Complementing the new suites is a brand new Bistro, The Keats Library, the Cedar Sanctuary and splendid gardens created by a Chelsea Flower Show Gold Medal Winner.



For more information pop in for a cup of tea and a chat.
Let us show you we care.

Tel. 01483 275 191

residential, nursing and dementia care

Cedar Court Care Home, Essex Drive off Elmbridge Road
Cranleigh, Surrey GU6 8TX www.cedarcourtcarehome.co.uk

Printed by Andrew Lock of Top Print

From the Editor

Welcome to this edition of nEWs and viEWs magazine, which is packed full of interesting articles and information on local events for you to enjoy.

I'm pleased to inform you that the magazine is now also available online for those who might like to read it this way or share it with family or friends outside the village. Please visit the Welcome page of the Parish Church's website: www.saintpeterandsaintpaul ewhurst.org.uk and try it!

I am always happy to receive items for publication in nEWs and viEWs, so if you have anything of interest please either send it to me at p.henry@metrics-consulting.com or give me a call on 01483 275380. Any comments you may have on the magazine would also be much appreciated.

We hope you will support all of our local advertisers. If you wish to place an advertisement in the Autumn edition please contact Val Henry at val.dixon.henry@btinternet.com or on 01483 275380 by early August.

Best Wishes .. Phil Henry

Highlights of the Summer Issue

News from Ewhurst Parish Church	p8 - p19
News from the Baptist Church	p24 - p29
News from Rainbows End	p32
Ewhurst Horticultural Society	p33
Neighbourhood Plan	p35
Ewhurst Parish Council	p36
News from Ewhurst CE Infant School	p39
In Our Midst	p42
Ewhurst Players	p45
Local History Corner	p46
Stoolball Club News	p49

Cover: "View from Pitch Hill", photographed by Jan Jesson

The Hoppa provides a range of services for anyone in the community – REGARDLESS OF AGE or ABILITY – who does not have easy access to public transport. This means young and old alike as well as those in between, and anyone with a disability, regardless of whether it is permanent or temporary.

“Hop on a HOPPA today!”

For full details of services and prices, or for an application form to join the Hoppa Travel Club, please telephone:

01428 681701.

Hunters Lodge

Veterinary Practice

**Philip M Stimpson
MA VetMB MRCVS**

**1 Mapledrakes Road
Ewhurst GU6 7RG**



01483 276464

**41 Woodbridge Hill
Guildford GU2 9AD**



01483 570782

**Rumbeams Cottage
Products
Quails Eggs**

£1.50 a doz

**My eggs are produced by
pampered quails**

I raised the quails from eggs, they are as free-range as something that size can be, and they are fed extremely well!

If you would like to place a regular order, please call me on 268627. Alternatively, just telephone when you would like some. All orders delivered to your door!

Mrs R A Wimbleton

State Registered Chiropodist

**Surgery (doorstep parking)
& Visiting Practice**

**Established 35 years
The Street, Ewhurst, GU67PX**

New address:-‘Roseacre’
(entrance opposite The Allotments)

Tel:01483 277505



We are a non-profit making community pre-school in the heart of Ewhurst Village providing early years education for 2 to 4 year olds.

We're open 9.15 till 12.15 term time. We also offer extended sessions till 14.45 on Mondays, Tuesdays and Thursdays.

Feel free to drop in or contact us to come and meet the staff and children.



Tel: 01483 808488/01483 278378
rainbowsendpreschool@gmail.com
www.rainbowsendpre-school.org.uk

GLEBE COFFEE MORNING

(Organized by the two Ewhurst churches)



Everyone is welcome on a Wednesday morning throughout the year for tea, coffee and homemade cakes at the Glebe Centre.

Meet old friends and make new ones.

Open from 10.30 am - 12.00 noon

Transport available if needed

Please contact:

Sally (☎ 277368) or Jan (☎ 276655)

LOOKING FORWARD TO SEEING YOU

STATION GARAGE

FOR SALES, SERVICE, PARTS, MOT'S & TYRES ON ALL MAKES AND MODELS.



ŠKODA CITIGO



ŠKODA FABIA



ŠKODA YETI



ŠKODA RAPID



ŠKODA OCTAVIA



NEW ŠKODA SUPERB

**CELEBRATING
30 YEARS
WITH
ŠKODA**

**WHAT CAR?
CAR OF THE
YEAR 2016**
Best estate car
Škoda Superb Estate
2.0 TDI 150 SE Business

**WHAT CAR?
CAR OF THE
YEAR 2016**
Best family car
Škoda Octavia
1.2 TSI 110 SE

**WHAT CAR?
CAR OF THE
YEAR 2016**
Best small car
Škoda Fabia
1.2 TSI 90 SE



**FAMILY
VALUED**
STATION GARAGE - SINCE 1973



SKODA
Station Garage
Since 1973

☎ 01403 282080 🌐 www.station-garages.co.uk 📍 Station Garage 📧 @StationGarage 📱 stationgarage



Surrey Hills PC

Your local & affordable service
for home and business

Laptop, Desktop, Mobile and Tablet
PC & Apple

- ❖ Performance improvement
- ❖ Virus removal
- ❖ Network & Broadband
- ❖ Hardware & LCD repairs
- ❖ Affordable websites
- ❖ Purchase advice

No VAT
No fix = no Fee

Established 2008

01306 400121

david@surreyhillspc.co.uk

DM HANDYMAN
SERVICES

FOR ALL YOUR
MAINTENANCE NEEDS

Landscaping • Fencing
Kitchens • Carpentry • Plumbing
Painting and Decorating

*General household
maintenance indoors
and out*

01403 823687

07795 097102



Membership no. A111536

EwCare

Ewcare is a good neighbour scheme which provides support to people in the Ewhurst and Ellens Green community.

So don't forget! You can contact EwCare on 01483 277606 between 10.00 am and noon, Monday to Friday. Please give us as much notice as possible of your request so that we can find a volunteer to help you.

We are always looking to increase the number of Duty Officers — can you spare just 2 hours a month to man the EwCare phone? We also need car drivers, for both short journeys and trips to RSCH. Please get in touch with Angie on 01483 277505 or Di on 01483 277679.



*Summer is
coming- is your
garden ready?*

- Complete garden design
- New beds and borders
- Planting plans
- Rejuvenating existing beds

LESLEY WOOD GARDEN DESIGN

01483 272488 - 0771 228 9777

www.lesleywoodgardendesign.co.uk
lesleywood@btinternet.com

BLUE TICKING
Brilliant Spaces for Kids



*Fabulously fun and unique goods.
 Vintage, new and totally brilliant.*

www.blueticking.co.uk

John Shaw Building Services

Based in Ewhurst

A reliable, friendly and trustworthy local service offering well priced, good quality internal and external renovation.



Services include:

Painting and decorating • Tiling and flooring
 Furniture design and build • General carpentry
 Bathroom and kitchen installations
 Garden maintenance • Patios and decking



Contact John - 07816 266941

john@johnshawservices.co.uk
www.johnshawservices.co.uk

ST PETER AND ST PAUL'S CHURCH



Once again the nation has cause for celebration as we wish the Queen a happy 90th birthday this year, and I'm sure that here in Ewhurst, as in towns and villages across the country, we will be enjoying street parties and special events over the designated weekend of 11th June.

Celebrating together is an important part of forming our identity as a community. There has been much talk in recent years about 'what it is to be British'; what are 'British values' and what is it that makes the people of our nation distinctive from other peoples across the world and how does that evolve in a modern world where greater freedom of movement for people brings both benefits and challenges? Having a focus around which we come together to celebrate strengthens our common identity. Scenes of joy at the success of British sportsmen and women are rare enough, but they are rare moments when we can celebrate as a nation. We show little enthusiasm for any sort of national day (though Remembrance Sunday in November is more and more marked with quiet pride in those who made sacrifices for us). An archetype 'Brit' might be Simon Cowell or Judy Dench or David Beckham or rapper Tiny Tempah or James Bond. Is our national meal Fish & Chips, Roast Beef or Chicken Tikka? How do we know who we are?

In the Bible God gave to his chosen people the Jews a number of celebrations throughout the year, often based around the seasons and land, but always recognising their place as 'the people of God'. Knowing who they are has been an essential part of being Jewish throughout the centuries.

The celebrations are listed as God handed them down to Moses in Leviticus. They are: The Passover (which celebrates the escape from captivity in Egypt), The Festival of Unleavened Bread (celebrated the next day it remembers that they had no time for yeast to leaven the bread they ate as they escaped), Offering the Firstfruits (celebrates the fertility of the land God gave them), The Festival of Weeks (kind of a Harvest festival), The Festival of Trumpets, The Day of Atonement, The Festival of Tabernacles (again celebrates the fact that God brought them safely through the wilderness).

These celebrations involved religious ritual, but almost always food and

drink and a party for the whole community. Jews continue to observe them today. All ages are involved and the celebrations take place at family level as well as at community level.

As Christians our own service of Holy Communion, which we hold every week in our church, is based around a Jewish ritual meal - the Passover meal that Jesus celebrated at what we know as 'The Last Supper'. Like the Jewish festivals it serves to give Christians a strong sense of community.

We have lost many of the season and land festivals on which we used to rely in this country; we've retained Harvest Festival, but after all who needs Plough Sunday and Rogation Sunday when we can buy mangoes in Sainsbury's all year! I think it is a sad loss though, because these celebrations strengthen local ties; a chance to get together, meet our neighbours, let our hair down and have a laugh with friends.

This year we have the fun of the village carnival in July and the Queen gives us another excuse for festivity in June. We will be having a big party in The Rectory garden after giving thanks for the Queen in an All Age Service in church on Sunday 12th June – everyone is welcome; bring along some food and share what everyone else has brought! We will have a bouncy castle and lawn games to keep you entertained. Hopefully it will be a chance to get together with friends and neighbours and great village occasion! Your personal invitation is on page 12!

David

CHURCH GIFT DAY

Saturday 25 June 2016

outside the village shop from 8am – 1pm

**Your chance to support Ewhurst Parish Church.
It can't survive without your help.**

More information on how to make your gift and why it's vital for the future of our Parish Church is in the Gift Day leaflet delivered with your nEWs and viEWs magazine.



JUST A NOTE ...

Junior Choir

Very exciting to report that we now have 14 young choristers aged 4 – 11 who meet weekly during term-time. Twelve months down the line, the *Junior Choir* is certainly coming into its own - numbers have increased and the opportunities for the youngsters to join in the services are encouraging. This is an exciting time – new beginnings, new challenges. Over the Easter period members of the *Junior Choir* took part both in the Walk with the Donkey and the All-Age Easter Day Service. Congratulations!

Looking to the future, the youngsters will be a part of the occasional 5th Sunday services and as the year unfolds we eagerly look forward to other opportunities to show-case our young members.

Each chorister is enrolled into the Royal School of Church Music *Voice for Life* training scheme which enables them to learn how to use the voice, music skills and understanding, charting personal progress and gaining a broader understanding of the choir and its role. My sincere thanks to parents and grandparents who enable and support the youngsters in their quest to sing. I do so welcome your kind encouragement.

The Adult Choir continues to thrive. In an age when singing in the local church choir is not at the top of everyone's agenda, it is humbling and exhilarating to be a part of a small ensemble who come together week in week out to rehearse for the various offices and, let's face it, the variety of services is quite amazing, ranging from the traditional prayer book service with sung psalm, canticles, responses and anthems to the All-Age services with many varying degrees in between. AND, how fortunate are we to have our occasional instrumentalists and singers to enable us to go that extra mile.

Singing in *the choir* is very much a team sport and the camaraderie that *the choir* engenders is quite unique. Alas, too often, we can be bogged down by an inability to get it right – anxious about the notes, coming in at the right place, not having brought the right spectacles, wearing red shoes or whatever! BUT the sense of achievement one experiences when a piece flies is truly tremendous. The joy of making music with one's own instrument, the voice, is amazingly amazing. Singing is such fun. If you would like a piece of the action, then speak to me, Valerie.

Val Henry - Director of Music



A musical journey

Across the Centuries

Saturday 11 June, 7.30pm

Holy Trinity Church, Guildford

John Rutter - *Gloria*
Jonathan Willcocks - *Magnificat*

Gabrieli - *Jubilate Deo*
Victoria - *O vos omnes*
Viadana - *Exsultate*
Hassler - *Dixit Maria*
Lotti - *Crucifixus*
Monteverdi - *Cantate Domino*
Music for brass and organ

Guildford Choral Society
Southern Pro Musica Brass

Charlotte Schoeters *Soprano*
Michael Waldron *Organist*
Jonathan Willcocks *Conductor*

Tickets £23, £20 (concessions £10)

available now from Guildford Tourist Information Centre
155 High Street, Guildford GU1 3AJ

Tel: 01483 444333 or www.visitguildford.com

Guildford
Choral Society
is a Registered
Charity No:
280533



Tickets also available
via our website

guildfordchoral.org



*The PCC is commanded by
Rector Rev'd David Minns to invite*

**All Ewhurst Residents,
Friends and Family**

*to a Garden Party in celebration of Her
Majesty The Queen's 90th birthday
at The Rectory Garden
(or The Wilson Room, if wet)*

*on Sunday 12th June following a special
All Age Family Service at 10.30am*

*Please bring your own picnic, drinks, glasses
and, if possible, chairs or a picnic rug*

*To entertain the children there will be a bouncy castle,
zip-wire and lawn games*



St Peter & Saint Paul

SUMMER SONGS OF PRAISE

in the Grounds of
The Old Rectory
Nursing Home
Ewhurst, GU6 7PX

(By kind invitation
of The Geoghegan Family)

Sunday 26th June

6.30 pm

ALL WELCOME





M.E.S

Mechanical Engineering Services

Bookings 01483 351964

**Servicing,
Repairs & MOT
for all makes
of vehicle**

**Full Engine
Diagnostics**

**Maintain your
Vehicle Warranty
when you use us
for all your
Automotive
Needs**



**Free
Collection
and Delivery**

**Courtesy Cars
Available**

Visit our website

www.carcranleigh.co.uk

BEN NICHOLSON

TREE SURGERY FELLING & FENCING

SAWN TIMBER

**eg fencing, logs, oak beams,
weather boarding etc**

Tel: (01483) 548754

Mob: 0771 9026998

Fully Insured

CHRISTMAS CARD PHOTOS FOR 2016
(Sorry to mention Christmas so early!!)

We will need photos to use on our Church Christmas cards in late August/early September so that we have time to make our selection and get the chosen designs to the printers ready for sales in October.

If you have any photos you think would be suitable, please e-mail them to Jane Harry as condensed jpgs or in similar format at geoff@ewhurstgreen.fsnet.co.uk before **Friday 26th August**, if possible..

Please Note:

Photos need to be in landscape layout and we are especially looking for winter/village/Christmassy themes.

GET GIFTS and SUPPORT THE PARISH CHURCH

Notelets (2 designs, 10 per pack)	£4
Mug (limited edition)	£6
Note block	£3
Key ring (3 designs)	£1
Fridge magnet	£1
Pen	£1
Post cards (4 views)	£0.25

Bereavement Group Coffee Mornings

Although Rev. Tricia Hislop is no longer attached to the Parish Church she is going to continue to help with the Bereavement Group. If you would like help and support following a recent bereavement please telephone either Julia on 01483 271419 or Tricia on 01483 274359. You do not have to be a Church-attender to come to this group.



SONNY'S CAFÉ

is open in the Wilson Room at St Peter & St Paul's Church on school term mornings.

Just drop in on Monday, Tuesday, Thursday or Friday from 8.45am until mid-morning. We serve Fair Trade tea and coffee, soft drinks and biscuits in the wonderful surroundings of our new room, in the heart of the churchyard.

There are toys for the children and a warm welcome for everyone—stay as long as you like and make new friends!

St. Peter & Paul, Ewhurst



BABY AND TODDLER GROUP

Come along and join us in the Wilson Room (adjacent to the Church) to meet new friends, have a coffee and let your children enjoy the toys and activities.

We are here every Friday in term time
between 10am and 11.30am

Toddlers, new babies, all are welcome
Please bring a responsible adult with you!

Rosie and Jan

Rosie Smy (01483 351386), Jan Jesson (01483 276655)

Saint Peter and Saint Paul Ewhurst



Treasure Seekers Club

A club for children which takes place on the 2nd, 4th and 5th Sundays in the month. Children can be dropped off at the Wilson Room for a 10:30 start. Activities include art, craft, music and games and children of all ages are welcome – though under 3's need to be accompanied by an adult. The session ends at approximately 11:45 when parents are welcome to join us for refreshments.

There is no charge for the sessions. All new *Treasure Seekers* members receive a welcome pack and their very own *Treasure Chest!*

So, come along and join! For more information contact Kathryn Pyper on 277460 or at pypers@btinternet.com

..... FROM THE PARISH CHURCH REGISTERS

Wedding:

21st May 2016

Fiona Pilcher and Benjamin Griffen

Funeral:

21st March 2016

Phyllis Johns

Interment of Ashes:

3rd May 2016

Kathleen Parsons

DID YOU KNOW?

Our church has its own website with information about services, other events and items available through the church. You can now also read nEWs and viEWs there.

Go to saintpeterandsaintpaulewhurst.org.uk and see for yourself.

We are also on Facebook: Saint Peter and Saint Paul, Ewhurst.

You can e-mail us at ewhurstchurch@yahoo.co.uk.

PARISH CHURCH HOLIDAY CLUB 2016

**Calling all 3-7 year olds
Join us on August 15th 16th & 17th at the
Village School**

**GET YOUR PARENTS TO PUT THESE DATES
IN THEIR DIARIES**

The three mornings are from 9.30am – 12.00am and finish with an evening session that parents can attend on Wednesday 5th August at 7.30pm.

Application forms and more details will be available from David Minns in July.

**PLEASE NOTE THE HOLIDAY CLUB DATES ARE LATER
THAN USUAL**



**COME to the PET
SERVICE!**



**Sunday 17th July at 10.30 am in the Rectory
Garden**

Pets of all descriptions are welcome at this special service along with their owners.

Please make sure that you are brought on a lead or are kept safe in a suitable way so that you and your owner can enjoy the service.

Biscuits available afterwards!

SPECIAL PARISH CHURCH SUMMER SERVICES

Sunday 12 th June	10.30am	All Age Celebration Service followed by a Party to mark The Queen’s Birthday in the Rectory grounds
Sunday 26 th June	6.30pm	“Summer Songs of Praise” in the grounds of The Old Rectory Nursing Home
Sunday 7 th July	10.30am	20/20 Puppet Service followed by a “Sausage Sizzler” barbecue
Sunday 17 th July	10.30am	Pet Service in the Rectory Garden
Sunday 4 th September	3.00pm	Outdoor service with the Baptist Church on the Recreation Ground, Broomers Lane

PATTERN OF CHURCH SERVICES

WEEK	8.00 am	9.00 am — 10.30 am		6.30 pm
1		9.00am 10.30am	BCP Communion 20:20	BCP Choral Evensong
2	BCP Communion	10.30am	Holy Communion - Common Worship (Treasure Seekers)	
3	BCP Communion	10.30am	CW Morning Prayer	Evening Worship
4	BCP Communion	10.30 am	Holy Communion - Common Worship (Treasure Seekers)	
5	BCP Communion	10.30 am	Morning Prayer (Treasure Seekers)	

N.B. Check service details by looking in the weekly church news sheet or on the church website

HemmingWays

Alterations & Repairs

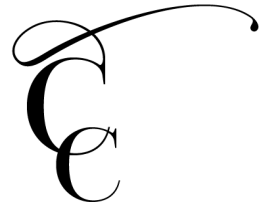
Garments

Blinds

Curtains

Tel: 078 54321 910

hello@curtaincollectif.co.uk



Curtain Collectif

Bespoke curtains, blinds and accessories

Email: hello@curtaincollectif.co.uk

Tel: 078 5432 1910

Joan Harbottle

Many Ewhurst residents will remember Joan and will be sad to learn that she died at her home in Wales on 12th February, having reached the age of 93.

She taught at the Village School for many years and will be recalled with affection by her many pupils. She was also involved with several voluntary organisations in the village.

Joan and her husband retired to Aberdovey. Sadly, Jack died in 2003 but Joan carried on with her many and varied interests. She travelled extensively visiting family and friends, and managed a short visit to Ewhurst almost every year until the summer of 2015 when her health began to fail.

She loved Ewhurst and her family requested that, if possible, her many friends and former colleagues be invited to meet and remember her at the time her funeral was being held in Aberdovey. At 12 noon on Friday 19th February they met in the Wilson Room and were led in prayer by Keith Field, one of her oldest friends.

RIP Joan dear friend. From Rosemary, Gladys and Maura

WOMEN'S FELLOWSHIP—All Ladies Welcome!

We are a very friendly group and we meet once a month. Our programme covers a variety of subjects.

Meetings are at 2.30pm unless otherwise stated, **on the second TUESDAY in the month.***

Jun 14th

Summer lunch at 12.30pm

Jul 12th

A talk by David Parker called "Life as a Sweep"

Aug 9th

Tea in the garden

For more information contact Julia Stearns on 01483 271419

EWHURST VILLAGE CLUB

POOL TABLE, BINGO,
DARTS, MUSIC NIGHTS,
WII GAMES, SNOOKER ROOM,

LICENSED SOCIAL CLUB

NEW MEMBERS WELCOME

FAMILY FRIENDLY

1A OCKLEY ROAD 01483 277300

JENNIFER MARGRAVE SOLICITORS LLP

- Wills, Trusts & Probate
- Lasting Powers of Attorneys
- Court of Protection matters
 - NHS funding issues
- Non-mortgage related residential conveyancing

Tel: 01483 562722

The Old Post Office, 130 Epsom Road,
Guildford, GU1 2PX



**Wills &
Inheritance
Quality**



E: enquiries@jennifermargrave.co.uk

We advise on law but do much, much more!

www.jennifermargrave.co.uk

Authorised and regulated by the Solicitors Regulation Authority
SRA No. 533213



Cranleigh Village District needs more adult helpers

Girl Guiding Cranleigh District covers both Cranleigh & Ewhurst areas. We run four sections: Rainbows for girls aged 5-7, Brownies for girls aged 7-10, Guides for 10-14 year olds and the Senior Section for 14-18 year olds. All this is made possible thanks to the support of our adult volunteers. Currently 170 girls are active members in our District and all are having a fantastic time. Girlguiding gives girls a safe space where they can be themselves, have fun, make friends, try new things, gain valuable life skills and make a positive contribution to their communities.

"I made lots of new friends being part of Guiding and love spending time with them each week doing lots of exciting and different activities." Willow, Brownie aged 8

Unfortunately we also have too many girls currently waiting to join Rainbows or Brownies. Some girls have waited for such a long time, they have missed their opportunity to be part of Girlguiding. Our waiting list for Rainbows can be over two years; Brownies currently have to wait up to 18 months to join.

We desperately need more adult volunteers to help us open new units or support our existing ones. Could you volunteer some time each week? Our volunteers receive all the training and support they need.

Even if you cannot commit to helping weekly but would still like to get involved, there are many other areas we need help with. If you have an interesting skill or job that could give our girls inspiration, knowledge, or skills, then please get in touch. We'd love to invite you along to our sessions.

If you're interested or would like to find out more, please email cranleighguiding@gmail.com



Ewhurst and Cranleigh Brownies on their Brownie Holiday 2015

**LOXWOOD
LANDSCAPES**

Paul Gregson BSc Hons

Hard and soft
landscaping
Garden design

Any project considered

For friendly advice and a free
and prompt quotation
contact Paul on

**01403 753 204
07949 312 402**

paul@loxwoodlandscapes.co.uk

Robert Hay FRICS
Planning & Design
www.roberthayplanning.com

Chartered Surveyor offering wide experience in
all aspects of Planning, Design & Construction

- Extensions & Conversions
- New House Designs
- Planning Applications
- Building Regulations
- Planning Appeals
- Project Management

For a free initial consultation telephone

01483-277707

**HAZELBANK
COUNTRY
STORES**

The Street, EWHURST

Tel 01483 277442

*Groceries - Greengrocery
Beers, Wines & Spirits
Tobacco - Confectionery
Newsagent*

LOCAL DELIVERIES

**COMPREHENSIVE
FOOT CARE**

**HEALTH PROFESSIONS
COUNCIL REGISTERED**

**CHIROPODIST/
PODIATRIST**

**SUE ELLIOTT D.Pod.M.,
M.Ch.S, HPC REGISTERED**

SURGERIES AT

**EWHURST
01483 277257**

AND

**CRANLEIGH
01483 276178**

**PLEASE TELEPHONE FOR
APPOINTMENT**



Ewhurst Baptist Church

With Easter now behind us and the pleasure of the various events both churches in the village have participated in together our eyes are starting to focus on the Summer months and I would like to take this opportunity to draw you attention to some events in June:

On Sunday 12th June the nation celebrates the Queen's (official) 90th birthday. We are doing this at the Baptist Church both through our Sunday morning service having this specific focus and then afterwards by holding a Celebration Lunch. It seems right that we both give thanks to God and acknowledge the life-long service that Her Majesty The Queen gives to this country. An example of self-less service that she continues to offer even though now in her 90th year. The Queen shows us an example of service that is as distinctive as it is, sadly, increasingly rare in these days.

Then on Monday June 13th we are holding a *Christianity Explored Taster Supper*. The supper is a "no strings attached" way of being able to look at the Christianity Explored course which is an informal and relaxed seven week course for anyone who wants to think about what Christianity has to say about the meaning of life.

It's designed to help people explore the big issues we all think about. It's run by ordinary people and looks at the person at the heart of the Christian faith – Jesus Christ. You can ask any questions you want and meet people on a similar journey to yourself. We would not be so bold as to say we have all the answers but we do believe that the Christian gospel provides major insights, not just into the meaning of life but how to make the best of the precious life and opportunities we have all been given.

Lastly, in very early September you will find both village churches together on the Recreation Ground on the afternoon of Sunday 4th where we will be holding a shared open-air event followed by refreshments. This will be a combination of song and music, puppet shows and creative worship for all the family. Let's pray for fair weather for what should be a fun filled afternoon!

These are just three of a number of activities we are involved with this year at the Baptist Church. You will find fuller details and invitations to all

of these (and others) elsewhere in this magazine and on our website.

Wishing you and your family a warm and enjoyable Summer season.

God Bless

Simon Bodington

(Minister)

Ewhurst Baptist Church,

www.ewhurstbaptistchurch.org.uk

MY HOUSE IN DAMASCUS by Diana Darke
(An inside view of the Syrian revolution)

This is a must-read book, heart warming, shares history with such amazing and thought provoking insight.

This will help our understanding of the situation and is available in the Cranleigh Library - I have just returned it.

It's a brilliant read - Marian Copus



BABY AND TODDLER GROUP
at Ewhurst Baptist Church
Wednesdays from 10:15 to 11:45

Our aim is to provide an environment in which you and your children can make friends, chat, play and have a good morning out!

Everyone is welcome - mums, dads, grandparents and carers.

Refreshments are available for adults.

A fruit snack is provided mid morning for the children.

A variety of activities are available at each session.

For more information please contact: Jackie Bodington
on 01483 495426 or jbodington57@gmail.com





KEEP INTERESTED

KEEP SOCIALISING!

KIKS club - @ Ewhurst Baptist Church

Our social club, KIKS, meets on the 1st and 3rd Mondays of every month between 2 and 4pm.

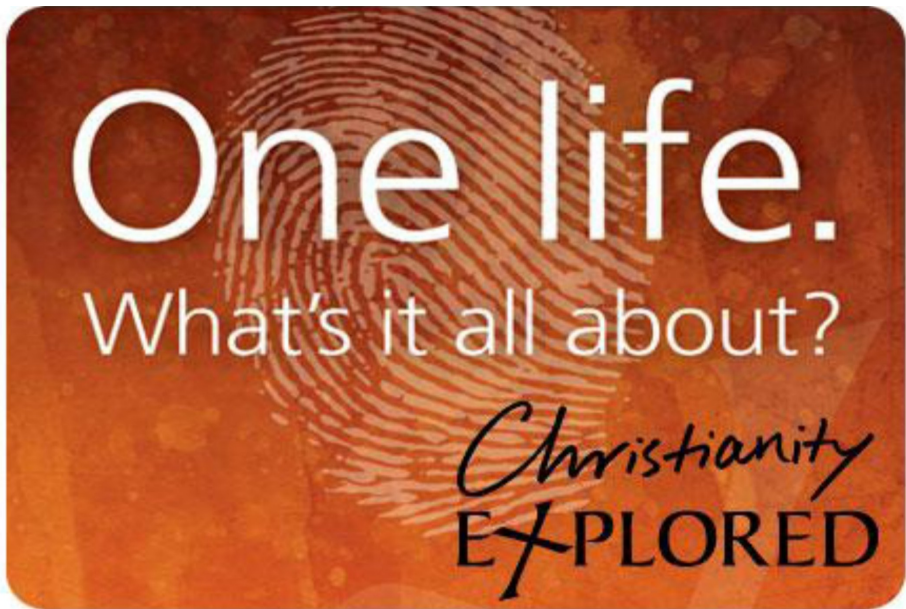
On the first Monday we have a Film Club where we show a popular film with an intermission for refreshments. The films, often comedies 😊 are chosen by those in attendance from a list of titles we have available.

On the third Monday of the month the Club offers the opportunity for friendship, chat, crafts and various board games alongside tea and cake!

Don't stay home wishing you had a bit of company, but put your coat on and come and join us.

Lifts can be arranged, just telephone us on 01483 495426 or 267858.

(There is no charge for either event).



**You are warmly invited to a Christianity Explored
Taster Event**

Christianity Explored is an informal friendly course that has been translated into over thirty languages around the world. It aims to give people the chance to explore the basics of the Christian faith in a non-religious environment with no pressure.

The *Taster Event* is an overview of what the course covers and includes a free meal. You are very welcome to come, be fed, listen and ask questions and should you decide afterwards that it is not for you, there will be no follow up.

**Our next Christianity Explored Taster Event is on the evening of Monday 13th
June at Ewhurst Baptist Church Hall from 7.00 to 9.00pm.**

If you have any questions or wish to book a place please contact Simon Bodington on 01483 495426 (if you have any specific dietary requirements do let us know).

We look forward to welcoming you on the 13th @ 7.00pm

RSVP



on Sunday 12th June at Ewhurst Baptist Church

You are warmly invited to attend our special service of celebration and thanksgiving for our Queen's life and service to this nation for more than sixty years.

Our service will commence at 10.30am and this will be followed at 12.30pm by a celebration lunch.

There is no charge for lunch but to help us know the numbers to be catered for we would appreciate you letting us know in advance if you wish to join us either by phoning Marian on 01483 267014 or Simon on 01483 495426.

R.S.V.P.


Churches Together in Ewhurst



‘Serving God and our community by
reflecting God’s love in all we do’



Come and join us on Sept 4th @ 3.00pm

on the Ewhurst Recreation Ground, Broomers Lane
for an all age, open air service for family and friends with songs,
puppets and much more
followed by refreshments and cake!

(in the event of poor weather we will relocate into the EYSC building)



Room Hire in Ewhurst

***Need somewhere to hold
a meeting or function?***

Have you considered the Baptist Church Centre?

Our recently upgraded facilities include:

- A large well equipped kitchen.
- A Church Hall that can seat up to 40 people at tables.
- Seating for up to 110 people (lecture style) in the Church.
- Several small meeting rooms.
- Car parking.

For Further Information, viewing & booking
call Cherry Matthews on 01483 277895 or 267878
or for more details/pictures visit:- www.ewhurstbaptistchurch.org.uk

Laboratory Literature



MSSL is having a laboratory literature evening to celebrate the Sun and space through writing. MSSL staff and poet-in-residence Simon Barraclough have recently launched poetry books and a popular science book and you can find out about these during the evening.

The evening will open with a brief talk illustrating the science of our Sun, followed by Simon Barraclough reading from his collect of poems called Sunspots. Then poems will be read by members of MSSL, from their collection called Laboratorio. Signed books will also be available to purchase.

The event is free and open to all. If the skies are clear, there will also be a chance to look through telescopes.

Date: Thursday 16th June 2016

**Location: the Mullard Space Science Laboratory,
Holmbury St. Mary, RH5 6NT**

Doors open at 6:30pm for a 7:00pm start (9:00pm end)

If you would like to attend, please let Libby know for numbers (l.daghorn@ucl.ac.uk or 01483 204100).

Cranleigh Arts Centre and MadCap Theatre Productions present

An Outdoor Shakespeare
production of

Much Ado About Nothing

In a stunning outdoor setting - just a short walk from the Arts Centre.



Tickets:

£13.20

(Students £11,
Family of
Four £44)

Friday 5 August, 7:30pm

St Nicolas Church, Cranleigh - Vicarage Lawn

Sponsored by

Informed Choice
INDEPENDENT FINANCIAL PLANNING



Box office: 01483 278000
www.cranleighartscentre.org

SUMMER TERM AT RAINBOWS

RAINBOWS END PRESCHOOL, EWHURST

LEARNING ABOUT ANIMALS

We now have two new additions to our rainbows family, two African land snails. The children have loved watching them and some children have taken them home to learn how to care for them. We also have tadpoles and caterpillars to help us to understand about life cycles.

SAYERS CROFT VISIT

The children visited Sayers Croft and

experienced activities such as pond dipping and searching for the Gruffalo.

"I LIKED POND DIPPING BECAUSE OF ALL THE CREATURES"

The trip was great fun and helped to develop

the children's love of the outdoors and confidence.

FUTURE VISIT TO NEWLANDS CORNER

We are planning our big family trip to Newlands corner in June. There will be activities led by two Rangers along with fun in the woods and of course the obligatory picnic!

Fingers crossed the weather is good to us.



TRADITIONAL TALES

Our topic this term has been traditional tales and the children have loved role playing the story of Three Little Pigs in amongst the hay bales in the garden.

EVENTS TO LOOK FORWARD TO

There are many exciting events coming up this term, including our Rio themed sports day, decorating the village hall to celebrate the Queen's birthday and the Ewhurst carnival where will be dressing up as characters from the Lion King.

St Peter and St Paul Baby & Toddler Group

Helpers for this popular activity are needed on Friday mornings during term time from 9.30 - 12noon. You do not have to be there every week but a commitment will be needed.

If you think you may be interested or would like to come along for a "taster session", please contact Rosie Smy
01483 351386

EWHURST HORTICULTURAL SOCIETY

www.ewhurstshortsoc.org.uk



We are holding our 123rd Summer Show in conjunction with the carnival on the Recreation Ground, Saturday 16th July.

Staging of entries commences at 8.00 am - 10.15 am. The Marquee will be open to the public at 2pm with presentation of awards at 4.15pm followed by a raffle and auction of some of the show produce.

All details can be found on our web site or contact the Show Secretary Zoe on 277960.

The Carnival theme is "The Movies". One of our floral exhibits is "Goldfinger" and the floral exhibit for boys and men only is "Spiderman".

Why not give it a go? We hope to see lots of entries in all the classes: - Veg and fruit, flowers, pot plants, floral art , photography, handicraft, home fare and children's classes which include a Summer collage: My favourite superhero (any medium): A vehicle made from vegetables: Six pieces of coconut ice.

We look forward to seeing you on the 16th July.


***For membership contact Carol on 01483 273580 or at
membership@ewhurstshortsoc.org.uk***

EWHURST TO CRANLEIGH CYCLE PATH

On Saturday May 7th a plaque marking the achievement of Alan Young, our Surrey County Councillor, and the vital roles of Richard Cleaves, Parish Council Chairman, and Nigel Farrington, former Chairman, in bringing the path into reality was unveiled.



Clr Young said “Together we have demonstrated that there is no such word as ‘impossible’ when it comes to looking after the residents of Ewhurst!”



LOCAL GARDENER

**GRASS CUTTING
STRIMMING
PRUNING
WEEDING
LEAF BLOWING**

**TONY WALKER
07729992674**



JUNIPER

FENCING LTD
All Types of Fencing Supplied and Erected

**JUNIPER HOUSE
30, CLAPPERS
MEADOW,
ALFOLD, CRANLEIGH,
SURREY
GU6 8HH**

POST AND RAIL
GATES
CLOSEBOARD
PANELS
DEER NETTING
RABBIT WIRE

**PHONE. 01403752265
MOBILE. 07841450015
FAX. 01403753490
Email. juniperpeter@aol.com
WWW.JUNIPERFENCING.CO.UK**



All the working groups have completed much, or in some cases, all of their evidence collecting. This means we are at the stage when we can start to see ahead to a possible Draft Plan before the year end. This is an aspiration rather than a promise! This evidence derives from both statistical sources and your opinions and responses to the Parish Survey, the Business and Young Person's surveys. Adoption of the evidence reports by the Steering Group enables draft policies to be drawn up, agreed and included in the draft plan.

Report on Community Facilities & Assets

The Steering Group have just received a report on Community Facilities and Assets in the Parish, which is currently with SG for adoption. One of the potential policies likely to arise from this report is whether certain facilities should be recommended for listing as an "asset of community value" (ACV), thereby providing some protection - albeit limited - against risk of their loss in the future. Outside the Plan, the Parish Council have already applied for this designation to be applied to the Bulls Head pub, following a probable planning application to develop some of its land.

Once the Steering Group has adopted this report it will be posted on the Neighbourhood Plan pages of the Ewhurst website www.ewhurst.org where other recently posted working group reports can also be viewed.

Report on Housing Numbers, Mix & Tenure

This evidence report is a comprehensive overview of housing in the parish and is among those reports adopted by the SG and already on the website. It sets out the deficiencies in the local housing supply and, amongst other matters, specifically identifies the need for smaller properties and the lack of market affordability in our area. This report really is worth reading since many policies for housing in the parish will flow from this vital collection of evidence. However, the report does not in itself set policy. That will be agreed by the Housing Working Group and the Steering Group, who are currently considering all the implications of this evidence.

One vital remaining piece of the process is the selection of site/s for housing development to accommodate the numbers Waverley allocates to the parish. Having adopted a set of site assessment criteria, the Housing Working Group will this summer ask all residents to choose from a list of suitable sites which ones should be allocated for housing. This survey will also set out some draft policies and may ask your opinions on some.

When we have completed the Draft Plan, it will be available in both digital and paper form for all residents to comment on. Further ahead, hurdles include acceptance of the Draft Plan by both the Parish & Waverley Councils, the test of an Independent Examiner, and a referendum of all Parish residents.

Tim Bloomfield

Chair Neighbourhood Plan Steering Group

News from Ewhurst Parish Council



Annual Parish Meeting

The Parish's Annual Meeting was held on Wednesday 20th April and it was a great event. The four speakers gave interesting and varied talks on their subject areas.

Andrew Lock from the Horticultural Society gave a humorous talk on the varied activities and excursions of this society and his call for exhibitors for their show on 16th July did not, I am sure, go unheard.

Jenny Hickman the New Trust Manager at Sayers Croft explained the set up at the centre and the co-arrangement that exists between the Trust and the activity centre. They have lots of activities for children but also cater for adults and are holding a number of events over the spring and summer which started with the guided walk through the ancient bluebell woodlands on their estate in April. Please look at their website for more details: <http://www.sayerscrofttrust.org.uk>.

St Johns Ambulance provided an update on the Automatic External Defibrillator arrangements in Ewhurst. The Parish Council has funded a heated cabinet for outside the village shop in which the village defibrillator will now be kept. The cabinet provides access to the AED 24 hours a day. The Parish Council would like to thank Hazelbank Stores who are supplying the electrical access to the cabinet to ensure the device stays above a minimum temperature to protect the battery. There will shortly be arranged further AED familiarisation classes so please keep an eye on notice boards and the website for details.

Angela Wimbledon spoke with passion about the activities of Ewcare in the village. They have many volunteers already but are very happy for others to come forward to provide yet more care to those in need in the village. If you have any time at all to spare for this very rewarding service please contact Ewcare on 277606. Finally Councillor Tim Bloomfield spoke on the Neighbourhood Plan process in the village and of all the volunteers who have given a tremendous amount of time already to this activity. There will shortly be an opportunity for residents to comment on sites to be put forward for inclusion in the Plan in order that the Neighbourhood Plan Working Group might gauge support for sites that are suitable for development. This support, or lack of support, will then be taken into account when sites are chosen for inclusion in the Draft Neighbourhood Plan by the Working Group. At this point in time it is not known how many sites or how many housing units Waverley Borough Council will require Ewhurst to accommodate in its Plan. However, the Plan is not all about housing and other

policy areas include: Travel and Transport, Telecommunications, Businesses, Built Heritage; Community Facilities & Assets and Biodiversity, and Draft Policies and Aims for these areas will all make up the Draft Plan. The Draft Plan will be put to the Parish Council and if passed by Resolution by the Parish Council, it will then undergo a six week consultation during which residents will comment on the entirety of the Draft Plan. These comments will then help produce the Final Plan which, if it passes an Examination by an Independent Inspector, will later be the subject of a referendum in the Village. Of course the referendum is sometime down the line and there is much work to undertake before then, but much progress is being made.

Surrey County Councillor Alan Young also attended the meeting and was available for discussion with Parishioners after the speakers.

The Queen's 90th Birthday

The Queen's 90th Birthday celebrations commenced on 21st April with Beacons being lit across the Country. The Official Birthday celebrations will be the weekend of 11th and 12th June and the Parish Council would like all clubs and societies in the Village to consider helping the Parish Council and residents of 'The Street' decorate this area in honour of this occasion. We have had offers so far from The Horticultural Society to provide a decoration for the Bulls Head Green and Ewcare will be decorating one of the Parish Council owned Bus Stops. The School, Church and Pre-School have their own arrangements. Please contact the Clerk for details if you would like to supply a village decoration. The Village Carnival follows on 16th July and it would be nice for the decorations to remain, or to be put up again, for the procession leading down to the Recreation Ground.

Please do e-mail clerk.epc@btinternet.com or telephone on 01483 267646 if you have any queries for the Parish Council. If you would like to receive the Parish Council E-Bulletin then please let the Clerk have your e-mail address. The Parish Council's E-Bulletin is a brief e-mail newsletter on current events and urgent matters which is sent out as often as needed. For copies of Minutes of Parish Council Meetings please see the website www.ewhurst.org.

Jane Bromley - Parish Clerk

Unwanted Spring Bulbs in your Garden??

Please save them as we are replanting the cleared area behind the Memorial Garden in the churchyard. Please separate your bulbs/corms into bags labelled with what sort they are to help us with planting. There will be a collection box in the Parish Church in June.

Thank you

SURREY RESTORATION



Specialists in high quality restoration of antique furniture, objets d'art and period house restoration.

Estimates are free.

Commissions also undertaken

Please contact us at our workshop
on 01932 868883
or our mobile 07711 635484

www.surreyrestoration.com



MANNS

CRANBICH - SURREY

SINCE 1887

Coats . Linens . Fashion . Beauty . Toys
Hoses . Furniture . Beds . Flooring . Curtains

01403 273777
www.mannesofcranleigh.co.uk

OPEN
Monday to Saturday 8.30am - 5.15pm
Sundays 10am - 4pm

Tree Surgery ~ Hedge Cutting ~ Garden Maintenance
All types of fencing supplied & erected, Logs for Sale

G. B. FENCING & TREE SURGERY SPECIALISTS

Tel: 01403 824048
Mobile: 07714 689824



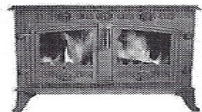
GUILD OF MASTER CRAFTSMEN
Free Estimates • Fully Insured

Checkatrade

G.B. STOVE INSTALLATIONS

Installation of all wood burning appliances
Installation of twin walled flexible flue liners
Service and Maintenance

Logs for Sale
01403 824048
07714 689824



News from Ewhurst CE Infant School

Our building works are nearly finished, and the Dove Centre (the replacement to the Miller Hut) will be officially opened on Wednesday 29th June at 9.30am. The village community, and particularly former pupils, are invited, and any school photographs will be gratefully received, as we will be mounting a display about the 170 years of Ewhurst School. The governors are still actively fundraising to meet the cost of our new classroom, so please look out for opportunities to be involved in supporting this project, or contact the school directly. Also on the 29th June, our 'Summer Sing' concert will take place at 6.00pm – the theme is an English Country Garden, and tickets can be obtained from the school office.

There will be further celebrations in June as we commemorate the Queen's 90th Birthday. We will be having a celebratory picnic lunch, and the children will be taking part in a Make a Crown competition, singing the National Anthem, and staff and pupils will be attending school in red, white and blue.

The summer term is now well underway, and the children are getting excited about starting to use the swimming pool after half term. We are as usual extremely grateful to the parish council for their generous donation towards keeping our swimming pool in use. The Jubilee Garden area is actively used for Forest School activities by our Reception class, and the small woodland is used to make dens, set trails, and create woodland art. The vegetable garden is tended by children from our after school club, Explorers, and the pond is home to a wide range of wildlife, and is always the final home to the many froglets who have been observed growing from tadpoles in the classrooms.

Our Summer Fair this year is being held on Saturday 18th June from 11.30am, and will have a pirate theme, as well as the usual favourite activities such as maypole dancing and a fancy dress competition. Each year the PTA raises a significant amount of money to provide a range of wonderful resources for the children for which we are very grateful, so please do put the date in your diary and support this village event.

The school continues to flourish at near capacity, with a full Reception class starting school in September, and we will shortly begin our excellent pre-school visits for the new children. It is a time of year I particularly enjoy as many partnerships with new families are established, which often last many years. I watch with pride how existing pupils confidently act as role models for the younger children, demonstrating our school values. Prospective parents are always welcome to tour the school - please contact the school office to book an appointment on 01483 277291. Our website is also always up to date with information about the school, our outstanding provision, and events and photos, so do please take a look at www.ewhurst.surrey.sch.uk.

Jane Dyer
Head Teacher



Ewhurst CE Infant School

**You are invited to the opening of
The Dove Centre
on Wednesday 29th June at 9.30am**

Contact the school office for further details on 01483 277291

A few words from your local school crossing patrol **"Lollipop Team"**

We are a local team of eight parents whose children attend Ewhurst CE Infant School. We are all volunteers and have all undertaken lollipop training provided by Surrey County Council. When on duty we are required to wear our hat and coat fully buttoned up (even on hot days!) to ensure we are as visible as possible to road users. Did you know when our lollipop stick is held up it has the same meaning as a red traffic light - stop. Also, when the "wig-wag" lights on the approaches to the crossing are flashing a 20mph speed limit is operational.

As you drive along you may not realise but we are looking out for pedestrians in four directions, those walking up the pavement from the Bull's Head direction, the pavement from Mount Close, the path from the church by the war memorial and those crossing back over from the school - quite a task. On a typical day we cross approximately 300 people in a session (pupils, siblings,

carers and staff).

We are aware that road users want to carry on their journey and we will only stop traffic for as long as necessary. In the interest of safety and owing to the steep and, depending on weather conditions, sometimes slippery steps by the war memorial we will wait for people coming down the steps to cross the road before allowing traffic to pass. We have empathy for those cycling up the hill and on horseback and will endeavour to let them pass before crossing the pedestrians.

For those people that like to "rev" their engines, keep creeping forward and use inappropriate language may we suggest starting your journey five minutes earlier and to those people that adhere politely to our "lollipop" we thank you in helping us keep all road users safe.

Best Wishes
The Lollipop Team

MJDH
PAINTING & DECORATING

◆ ◆ ◆

Marius Henderson
"A brush with the best!"



Please phone or write
to arrange a free estimate:
Mobile: 078 129 568 51
Home: 01483 274162
14 Dukes Close, Cranleigh, GU6 7JU
Email:
mariushenderson@hotmail.com



Home visit?
Dog walking?
Shopping?
Prescription?
Simple household repairs?
Surgery Visit?

EwCare
Tel. 01483
277606
Ewhurst & Ellens Green Village Care

Neighbourly Help
is available for anyone
in need - any age - try

EwCare
01483 **277606**

line open Weekdays 10.00 am until 12.00 noon

In Our Midst ~ Richard Cleaves Our Dedicated Chairman

Richard was co-opted on to Ewhurst Parish Council in 1996 and for the past 17 years since 1999 he has been its chairman. Under his leadership the village has met the pressures and challenges which inevitably come at a time of growth and high expectation. When I spoke with him recently, it was not surprising that with his single-minded dedication to the job, we spent much of the time looking back at past achievements and forward to things which the council will be dealing with in the future.



In his other life, as he puts it, his family were from Bristol but they moved to the North East after his father's work took them there, via Yorkshire and then onto Whitley Bay on Tyneside. A beautiful spot on the coast, Richard grew up there and remembers St Mary's lighthouse and the great attraction of the Spanish City arcade and funfair on the seafront. By the time his father got his next job in the South, Richard had left school and chose to stay in the North working on farms. His parents, with his younger brother and sister, moved to Capel and then to Mapledrakes, Ewhurst in 1975. Here, there was enough land for his father to run a sizable garden produce business. He was always interested in gardening, Richard says, he used to live on greens. Some folk may also remember his mother, Joyce, working with the strawberries, raspberries and fresh veg.

In 1980, Richard's life was changed forever when a serious accident confined him to a wheelchair. By 1981 he had undergone rehabilitation at Hexham and Stoke Mandeville Hospitals and in the October he was lucky enough to be one of the first tenants in one of the council flats in Links Close. After four years there, he and his wife Jane, moved to their present bungalow in Broomers Lane. Here, with the extra space, he was able to nurture his interest in gardening by growing bedding plants and creating beautiful hanging baskets of mixed flowers and fuchsias which he propagated himself. At the same time, with his flair for woodwork, he began making things at home. He made a variety: windows, tables, chairs, doors, a bench seat in the Street and some for the Rec, one of which is still in use today. It is marvellous what you can do even with limited physical dexterity he says.

Eventually he looked to move on to something different and this led to an interest in local government. In 1999 he took part in what was the first Parish Council election for 20 years, 11 candidates applying for 9 places on the council. He was elected to the Parish Council together with Val Henry, now they are the longest serving members. As the new chairman he began to move things forward with more modern working practices. For previous parish councils, responsibilities were more limited and extended little beyond the care of the cemetery and village hall. Councillors did much of the work themselves, in house, hedge trimming, litter picking etc. It very much depended on how pro-active individuals wanted to be and how much free time they had available. Contractors are now engaged to follow maintenance programmes

drawn up by the council and can be held to account for what they do and the time they take to do it. Of course, volunteers can and still do help and although liability is an unnecessary worry, they are well covered by the parish liability insurance policy. Council members are now given responsibility for a portfolio of their own. These included the recycling scheme, trialled in the Glebe by the council and LEAP, and eventually adopted by Waverley Council. The maintenance of the Rec., burial ground and allotments and the common land within the parish. They help Surrey CC with the 54 km of footpaths in the parish, and unlike many parish councils, do a lot of the work themselves with LEAP.

The planning and building of the EYSC building is his proudest moment - a huge project. The team worked so well together with the previous clerk Alyson O'Connor working tirelessly on the many official documents and regulations and architect Nigel Farrington exactly fulfilling the design brief. In 2009 it became another great facility for the village. Richard asks - what other small village the size of Ewhurst can boast so much? The EYSC building, a refurbished village hall, the Glebe Centre, CIU club, cricket, football juniors and seniors and a bowls club, tennis courts, an indoor rifle range and the fantastic state of the art children's playground. Plus a thriving shop, pub and small businesses, to name a few. He is puzzled why some people in the recent survey did not think that the village had improved over the years. We have all the facilities that Cranleigh has without the population!

Planning issues have been the most highly contentious of topics over recent years. Luckily Val Henry has taken this on within the council and with her tremendous experience with Waverley council, has taken much of the burden and driven it forward. Because of their contentious nature, decisions on the larger developments are now made by the full council after all views have been aired in a public meeting with the planning committee. On a personal note, Richard is frustrated with the difficulty of finding enough sites for low cost housing but understands why people are unwilling to accept any new housing. In the past, he had benefited from a council flat after his accident, and he believes there should still be a supply, however small, available for those who need them. The Neighbourhood Plan, under the able care of Tim Bloomfield and his group, will be a well informed document drawn up from information gained by public consultation and comment. Better than something drawn up by just the nine people of the Parish Council, it will represent the thoughts and wishes of the whole community and as a fundamental part of the Waverley Local Plan, its decisions will have legal status. A priority preferred housing site list will be chosen by the villagers and it will be interesting to see what the outcomes will be. Some housing will have to be built somewhere and the council will go with whatever the village decides; they will then know where they can build and what they can support. Richard speaks well of the present council who are a highly pro-active group of able people who know their stuff. Although it can at times be a thankless task, he says, he very much enjoys sorting out people's problems and when answering the phone at home, always tries to answer "What can I do for you?". Over the years he has certainly overseen many changes in our Parish.

Geoff Harry

Arthritis
Research UK



Summer Luncheon

Thursday 23 June 2016
The Old Rectory, Ewhurst
12.00 noon onwards

- Delicious 2 course luncheon with a glass of wine & coffee
- Raffle & stalls including plants, preserves, books, honey & gifts

Tickets £17.50
Contact 01483 267 195

In aid of Arthritis Research UK
www.arthritisresearchuk.org



 @ArthritisRUK  /arthritisresearchuk
Registered Charity England and Wales No. 207711, Scotland No. SC041156.

Ewhurst Players

The cast were in fine form when they entertained the village with two one act comedies by David Tristram at the end of May: “The Fat Lady Sings in Little Grimley” and “What’s For Pudding?” The results were hilarious and the village hall was full of laughter for several nights.

First they portrayed the hapless Little Grimley Dramatic Society getting one over their more proficient rivals, stealing their audience and giving Joyce (Jeannie Metcalfe) her long-awaited chance to “sing” (sic) in a musical production. The ever abrasive Gordon (Mike Fanya) kept that opportunity limited to a single squawk! Meanwhile Margaret (Patsy Mortimer) mediated between Gordon and Joyce while Bernard (Ben Aveyard) consumed enough bananas to keep a chimpanzee happy.

After the interval the audience was much amused by the verbal antics as Tor House’s Mary tried to jog her husband Jack’s memory (Ben Aveyard). Insults flew between Mary and Jack as Fred (Felix Cuthbert) and Maureen (Jo McInnes) helped Mary consume a bottle of whisky. Meanwhile Dennis (Mike Richardson) remained oblivious to events going on around him as he searched for brown trousers in Mary’s shopping catalogue.

COME AND JOIN US! We love new members! We have lots of fun rehearsing and performing and we’ve got a programme of summer social events open to anyone who would like to come along.

AUDITIONS for our next play John Mortimer’s “Voyage Round My Father” take place at 7.30 pm at the village hall on Wednesday June 8th and Tuesday June 14th. The play is an autobiography of John Mortimer’s own life on which the television series ‘Rumpole of the Bailey’ was based. He was a divorce lawyer, fearsome domestic tyrant, a lover of gardens and Shakespeare and warned his son against the perils of opium (causes constipation) and sex (overrated). Contact Mike Fanya on 01483 277252.

SUMMER SOCIALISING WITH THE PLAYERS – EVERYONE WELCOME!

An afternoon of live Jazz on the South Lawn at Polesden Lacey – Sunday June 12th.

Don’t forget to bring your picnic! You do not need to be a National Trust member to go. Further details from Bill Pilcher on 01483-278594.

<http://www.nationaltrust.org.uk/polesden-lacey/whats-on>

Beach BBQ on the west beach at West Wittering – Sunday July 17th from 11am

Brings your kites, games, picnic and meat to cook on our large gas BBQ. Food is also available at the beach café, the choice is yours. Vehicle entry fee charged by the estate.

<http://www.westwitteringbeach.co.uk/information.html>

LOCAL HISTORY CORNER, by Janet Balchin

The Miller Hut

2016 is the 170th anniversary of the foundation of Ewhurst School and the school will celebrate with the official opening of the new building, which replaces the old 'Miller Hut'.

The original Miller Hut was donated to the school, as an additional classroom, in 1952 to ease the overcrowding due to the rapid increase in pupil numbers after the Second World War. During just five years the number on roll increased from 87 in 1946 to 124 by 1951. This was partly due to the raising of the school leaving age from 14 to 15, in 1947, under the provisions of the wartime 1944 Education Act. At this time, the school was still an all age school catering for children aged 5 – 15 and there was no secondary provision locally, apart from the grammar school at Godalming for the few children who qualified.

The 1944 act also introduced secondary education for all and in 1956 Ewhurst School became a primary school, for children aged 5 – 11, with education for older children at the newly-built secondary school at Glebelands, Cranleigh. Although this removed the older age group the numbers continued to grow as a result of the post war 'baby boom' and also new families moving into the area. By the mid 1960s numbers on roll had increased to around 150 children and the Miller Hut continued to give much needed extra space. The hut was given by Sir Hans Eric Miller, who lived at Oldhouse at Ewhurst Green, and was officially opened by Lord Macmillan, who lived at Moon Hall. Miller was a noted benefactor to village amenities and had also given generously to the old scout hut on the recreation ground (on the site of the present EYSC building) and donated an antique box settle to Ewhurst Church.

Eric Miller was born in 1882 and from 1900 followed a career in the rubber industry in Malaya, working for Harrisons and Crosfield. During the course of his career he became chairman of the British Rubber Producers Research Association and also served on the International Rubber Development Board. He was knighted in 1952 for his work in the rubber industry and had also received a Gold Medal from the Rubber Growers Association and was a Commander of the Order of Orange-Nassau. This is a civil and military Dutch order of chivalry open to "everyone who has earned special merits for society" comparable with the Order of the British Empire.

Miller was also involved in the preparation of the 'Stevenson Plan'* to stabilize rubber prices after the First World War. In 1922, British interests controlled about 75% of rubber production whereas the United States consumed about 75% of the rubber produced. Miller convinced Winston Churchill that sales of British rubber at a good price to the United States would do much to pay off Britain's war debt.

*By coincidence, Sir James Stevenson, later Baron Stevenson of Holmbury, the chairman of the Rubber Investigation Committee, which devised the plan, lived at Holmbury House.



The opening of the Miller Hut, 1952

Left to right: Lord Macmillan, Sir Eric Miller, The Bishop of Guildford, The Rev. Dollar, unknown, Mrs Clay, Canon Hughes and Mr James.

LOCAL POLICE CONTACT

Following Steve Baldwin's move earlier this year NICOLE MARTIN, 12402, is our new Police Community Support Officer.

Nicole's territory includes Ewhurst, Cranleigh and Rowly.



The
**Ewhurst
Carnival**



SATURDAY 16 JULY 2016

... GOES TO THE MOVIES

12noon PARADE • 12.30pm to 4.30pm RECREATION GROUND
EWHURST HORTICULTURAL SOCIETY SUMMER SHOW • DOG SHOW

Then in the evening **THE FABULOUS NOBODIES**
tickets@ewhurstcarnival.co.uk £10/£4 under 18s before 10th July. Then £12/£5.

www.ewhurstcarnival.co.uk



Come and support your village team

See below our list of home matches in 2016.

Enjoy a summer's evening on the Ewhurst Green supporting the friendly Ewhurst Ladies Stoolball Club!

If you like the look of the game and would like to join us you can email ewhurststoolball@gmail.com or chat to us off the pitch

Hope to see you there!

Dates	Away Team	League/ Friendly	Time
Wed 11 th May	Wonersh	League	6.45pm
Mon 23 rd May	Charlwood	League	6.45pm
Wed 1 st June	Alfold	Friendly	6.45pm
Mon 6 th June	Cranleigh	League	7.00pm
Mon 27 th June	Beare Green	League	7.00pm
Mon 4 th July	Strood Green	League	7.00pm



WEATHER REPORT



RAINFALL

Quoted in millimeters (1 inch = 25.4 mm)

Feb	Mar	Apr
46.0	122.1	65.0

TEMPERATURES (degrees centigrade)



	Feb	Mar	Apr
Maximum	12.0	17.0	19.9
Minimum	-2.1	-4.2	-1.5

Measurements kindly supplied by Richard Worby and Don Watson



Bullimores

Chartered Accountants

- Financial & Tax Planning • Accounting • Audit
- Taxation • Business Start-ups • Payroll
- Inheritance Tax & Executorship
- Probate & Estate Management

For advice, call our Dorking office on: 01306 880880
or email: partners@bullimores.co.uk
www.bullimores.co.uk

Bullimores LLP is registered to carry on audit work in the UK and Ireland; regulated for a range of investment business activities; and licensed to carry out the reserved legal activity of non-contentious probate in England and Wales by the Institute of Chartered Accountants in England and Wales

MEET YOUR PEST CONTROL EXPERTS



LEO WELLS
Rodent Prevention Specialist



PETER HIGGS
Non-lethal Honeybee Removal Specialist



OLIVER ALLEN
Woodworm & Damp Specialist

Covers London & South England - from Ewhurst



- Fast response & Guaranteed
- Experts in all species
- Stop pests returning
- Woodworm treatments

01483 273 478 | 07967 392 964

peterhiggs@pghpestcontrol.co.uk
www.pghpestcontrol.co.uk



Peaslake Fitness Studio
& Dancing School

BALLET / MODERN JAZZ
FREESTYLE / THEATRECRAFT

ADULTS' FUNKY
DANCE CLASSES



STEP / 50+ / BODY CONDITIONING
POWER WALKING / PERSONAL TRAINING

BIRTHDAY
DANCE PARTIES
ages 7 upwards

PERSONAL
DANCE LESSONS

for further information call Avril
01306 731182 / 07899 842727
e: dancearamix@btinternet.com

RAPLEY'S GROUND AND GARDEN MAINTENANCE

- LAWN AND FLOWER BORDER CARE
- TREE INSPECTIONS/PRUNING
- FISH POND SERVICE
- DRIVEWAYS/GARDEN PATHS
- SWIMMING POOL MAINTENANCE
- TREE SURGERY



JON RAPLEY
01483 277336
07791 106595
JRAPLEY1@GMAIL.COM

Saturday 24th September 12.00 - 4.00pm
St Peter and St Paul Ewhurst

is calling all to the

RECTORY FETE



As usual, there will be lots of traditional stalls
and games plus other attractions such as a
Zip Wire and Bouncy Castle

BBQ, teas, plants, cake & craft stalls, tombola,
raffle,
King or Queen Fancy Dress competition for all ages

Don't forget to go on our wonderful Teddy Bear Hunt
then come back and enjoy the Teddy Bears' Picnic

The Bell tower will be open
*Entrance to the Fete is **FREE***
Held in the grounds of The Rectory,
The Street, Ewhurst GU6 7PX

www.saintpeterandsaintpaulewhurst.org.uk

EWHURST MONDAY CLUB

The Ewhurst Monday Club is a social club for Senior Citizens. We meet on the third Monday of the month at the Glebe Centre, Ewhurst, at 2.15pm from April to October and at 2.00pm in the winter months.

We have a presentation or a talk or a Member's Meeting with a nice tea. Each November we go to the Bulls Head for lunch and a film. Our Programme is on the notice board at the Glebe Centre.

Visitors are welcome and pay £1 for their tea.

**If you would like further information, please contact Jean Dodd:
01483 278184.**

Ewhurst Evening WI

In March members heard a most interesting talk by Janet Balchin - Ewhurst Through Historic Eyes, and in April Hedley King came along with his guitar. He had members foot tapping as he sang some of The Nations Favourite Songs. In May we had Jane Alison come to talk on Portrait Painting. On the same night we discussed this year's Resolutions, Appropriate Care in Hospitals for People with Dementia and Avoiding Food Waste. Members also enjoyed a recent visit to the Watts Gallery.

In June, Janet Gale will be giving members An Introduction to Watercolours. In the forthcoming weeks members will be busy around the village. As part of the Queen's 90th Birthday Celebrations they will be decorating the village notice board near the Vets and on 16 July they will be at the Village Carnival selling teas and cake. Please come along and visit them under the WI TEAS BANNER. There will also be further information about the WI on display and members will be there to give you further details.

Please remember that we meet at 8pm in the Village Hall on the 2nd Thursday of each month (except August). For further details please contact Elisabeth Fiscbach on 01483 276904.

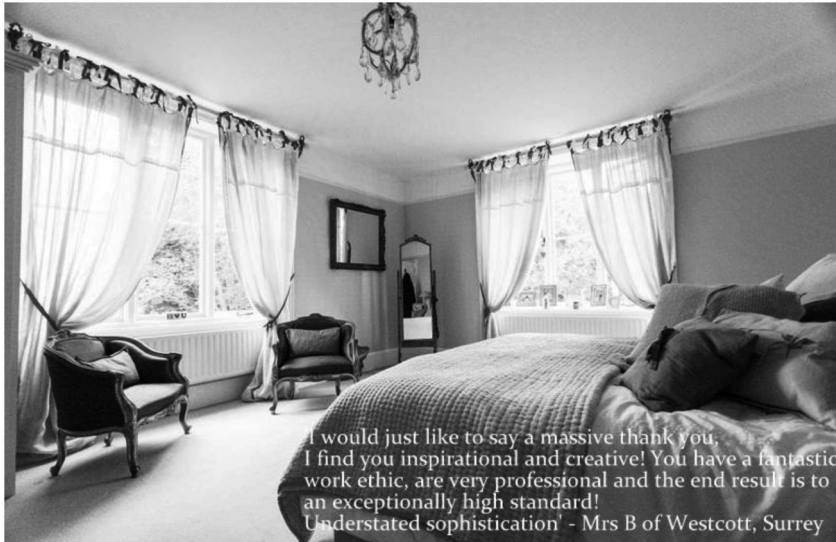
We look forward to seeing you!

TAILOR~MADE curtains & blinds

Bespoke curtains, Roman blinds, soft furnishings, fabrics, poles, tracks & pelmets plus made to measure blinds based in Ewhurst.

Free advice, measuring, quotes & temporary blinds provided during make up.

Full Installation service available, plus personal wedding list service & gift vouchers.



WWW.TAILOR-MADEHOME.CO.UK

Ewhurst 389614 christina@tailor-madehome.co.uk



This year's Surrey Hills summer family concert will take place on Saturday 25th June at 6pm at Cranleigh Village Hall. The concert features the Surrey Hills Singers, Young Voices and Training Choir and, as always, promises to be a delightful evening of beautiful and communicative singing. The choirs will perform a mix of styles and favourites to include - Royals, I got Rhythm, Linden Lea, Castle on a Cloud, April Showers, Love is an open door, Count on me and songs from the Sound of Music.

All three of these choirs are un-auditioned and new members will be welcome in September. Our ladies choir (Surrey Hills Singers) rehearse Monday mornings in Ewhurst; the Training Choir and Young Voices rehearse after school on Mondays in Cranleigh. Contact Debbie for further details (see below).

Tickets are £8 for adults and £4 for children under 16 and are available on the door, or contacting Debbie at debbie@surreyhills-choirs.co.uk or calling 01483 276281

www.surreyhills-choirs.co.uk

A Helping Hand from Surrey Libraries

There are few things that compare to the joy of getting lost in a really good book, or chatting about what you have just read, but what if age, illness, disability or caring responsibilities make it difficult for you to get to a library?

There are many people in our communities who are denied access to the wonderful worlds that books create, people who cannot get to a library through no fault of their own. To overcome this Surrey County Council Libraries provide a brilliant free service called Library Direct which is open to any resident in Surrey. This is offered in two forms:

- If you have a relative, neighbour or friend who can borrow books for you then the Library Direct Friends and Family is perfect. A specialized library card is provided to your friend or family member, allowing them to take out books on your behalf.
- If this way does not suit you the Library direct Home Service arranges for one of our dedicated volunteers to select and bring books for you. Volunteers are carefully selected and checked by the Disclosure and Barring Service so your security is assured.

Both services provide you with additional benefits such as large print books, extended loan periods and no charges or fees. If you would like to know more about the Library Direct service ring them on 01483 543599 or you can visit surreycc.gov.uk/librarydirect For local enquiries ask at the Cranleigh Library or contact the Friends of Cranleigh Library at 01483 275309.



*Cranleigh
Funeral Services*

P. BENNETT Dip FD M.B.I.F.D.

**IMMEDIATE ATTENTION
24 HOURS A DAY**

TEL: CRANLEIGH 01483 275758

**FUNERAL DIRECTOR
P. BENNETT Dip FD.**

**The Caring
Family Owned Business**

**Sussex House Funeral Home,
Ewhurst Road,
Cranleigh**

MONUMENTAL MASONS

St Peter & St Paul's Church Contact Details

Rector		Parish Secretary	
Rev. David Minns		Geoff Harry	275047
dlkminns@talktalk.net		PCC Secretary	
Church Office	277584	Joanna Cadman	268627
ewhustchurch@yahoo.co.uk		Sidesmen's Guild	
Associate Minister		Anne Barrett-Lennard	277075
Rev Dr Tim Seller	01306 627548	Bell Ringers' Guild	
Lay Minister		Jan Jesson	276655
John White	277663	Flower Guild	
Church Wardens		Jessica Smith	272146
Jane Harry	275047	Readers' Guild	
Jackie May	548923	Jane Harry	275047
Pastoral Assistant		Safeguarding Officer	
Jan Jesson	276655	Julia Stearnes	271419
Deanery Synod		Sunday Coffee Rota	
Liz Tingley	277471	Joanna Cadman	268627
Janet Templeman	548419	Parish Magazine	
PCC Treasurer		Editor, Philip Henry	275380
Michelle Matthews	267790	p.henry@metrics-consulting.com	
Director of Music		Distribution	
Val Henry	275380	Graham and Pam Childs	277511
Treasure Seekers		Advertising	
Kathryn Pyper	277460	Val Henry	275380

www.saintpeterandsaintpaulchurch.org.uk

Ewhurst Baptist Church Contact Details

Minister:			
Rev. Simon Bodington			495426
minister@ewhurstbaptistchurch.org.uk			
Deacons:			
Brenda Buchanan			351127
Cherry Matthews	Room Hire		277895
Glesni Pratt	Treasurer		273844
Marian Copus	Worship		267014
Church Office:			267878
Jackie Bodington	Mothers & Toddlers Group		495426
Hazel Jones	KIKS		276581

www.ewhurstbaptistchurch.org.uk

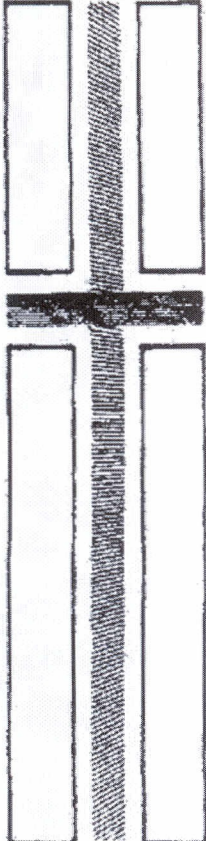
USEFUL INFORMATION

Ewhurst C of E Infant School (Head Teacher Jane Dyer)	277291
Cranleigh C of E Primary School	273286
Glebelands Secondary School	542400
Rainbows End Playgroup	07821 010918
Sayers Croft Field Centre (David Quoroll)	275541
Cranleigh Health Centre	273951
(Out of Hours)	111
SW Surrey Mobile Physiotherapy Service (Linda Haynes)	01306730074
Waverley Borough Council	523333
Waverley Borough Council (Locality Office, Cranleigh)	267654
Ewhurst Parish Council Clerk (Jane Bromley)	267646
Waverley Police	101 or 571212
Report Online	www.surrey.police.uk
Cranleigh Library	272413
Citizens Advice Bureau, Village Way, Cranleigh	03448 487969
Cranleigh Arts Centre	278001
Cranleigh U3A (Keith Atkins)	267040
The Old Rectory	267195
Ewcare	277606
The Glebe Centre (Tracy Randle—book via WBC)	523171
Ewhurst Village Society (Sue Handley)	277458
Bulls Head, Ewhurst	277447
Ewhurst Village Club (Wendy Chapman)	277300
Ewhurst Village Hall Bookings (Wendy Bollans)	01403 252954
Ellens Green Memorial Hall (Katy Rapley)	01403 823460

Waverley Borough Council	www.waverley.gov.uk
Ewhurst Parish Council	www.ewhurst.org.uk
Cranleigh Health Centre	www.cranleighmedicalpractice.com
Cranleigh Arts Centre	www.cranleighartscentre.org

Police Front Counter: Waverley Borough Council,
The Burys ,Godalming GU7 1HR

Pimm's



FUNERAL SERVICES

CO-OPERATIVE GROUP

**FUNERAL DIRECTORS
&
MEMORIAL CRAFTSMEN**

**DORSET HOUSE,
HIGH STREET,
CRANLEIGH 274079**

PRIVATE CHAPELS OF REST

**MARY ROAD, GUILDFORD
567394**

Immediate helpful attention night or day



DUKE of KENT SCHOOL

“A place where children can flourish
and gain an enthusiasm for learning,
which sets them up for life.”

DUKE OF KENT SCHOOL

Peastlake Road Ewhurst Surrey GU6 7NS

T 01483 277313 E office@dukeofkentschool.org.uk

dukeofkentschool.org.uk

